

CHARACTERISTICS – LUMINAIRE

Tightness level:	IP 66 (*)
Impact resistance (glass):	IK 08-10 (**)
Nominal voltage:	230V
Electrical class: Luminaire	II (*)
Driver box	I or II (**)
Length:	variable between 200 and 2000mm
Material:	extruded aluminium body and polycarbonate end caps

(*) according to IEC - EN 60598
 (**) according to IEC - EN 62262

APPLICATIONS

- Wall grazing light
- Illumination of columns
- Integration in handrail solutions
- Recessed floodlight

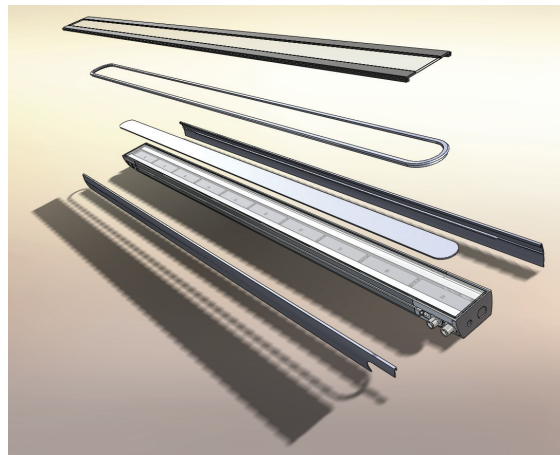
KEY ADVANTAGES

- Variable number of LEDs/m between 10 and 40LED/m
- LED density adjusted lumen outputs: 100% or 60% according to the application
- Variable length in steps of 10cm, max. length 200cm
- Optical toolbox allowing to change photometry on site
- Available with both symmetrical and asymmetrical lenses
- Driver and/or power supply can be attached to the SCULPLine or centralized externally
- Plug and play connectors
- DMX 512 protocol with RDM feedback

DESCRIPTION

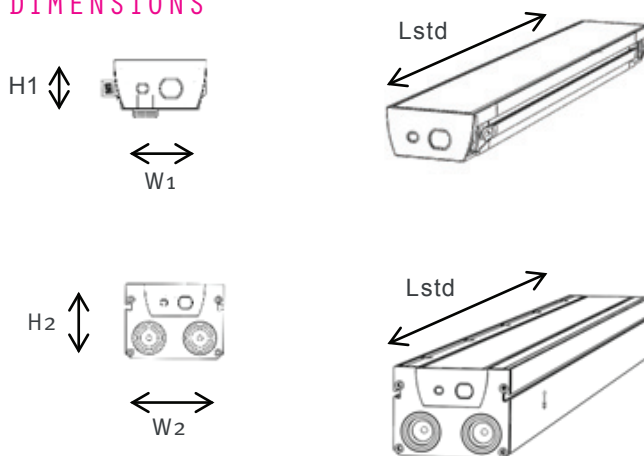
SCULPLine allows a large variation of flexibility for the lighting designer and the installer on site:

- Photometric: an optical toolbox is available for the designer, allowing changing the photometry on site.



- Cover plate: the cover plate can be chosen in any color and can simply be removed or clicked on to the front of the wall washer on site.
- Several configurations for the driver box: attached to the front, back or below depending on the available spacing on site.
- Plug and play: click-on connectors to speed up the installation time and to avoid any damage coming from wrong connections
- Ease of installation: the driver box has a through wiring system avoiding T-split connections
- Recessed: a separate box is available to integrate the SCULPLine in-ground

DIMENSIONS



H1	34-40 mm
W1	65-95 mm
H2	80 mm
W2	105 mm
Lstd	499-999-1499-1999 mm

PHOTOMETRY

LENS TYPE	PICTURE	EFFECT	APPLICATION
Narrow or medium			<ul style="list-style-type: none"> • Long objects • Pillars & columns • Towers • Vertical elements
Elliptical			<ul style="list-style-type: none"> • Broad walls • Arches & vaults • Bridges • Building facades
Assymmetrical			<ul style="list-style-type: none"> • Broad walls • Building facades • Handrail solutions

INSTALLATION

The driver-SCULPline combination gives you the flexibility to choose your optimal configuration, depending on your application:

Configuration	Description	Application	
Centralized power supply and driver	LED driver and power supply in a centralized location in a building or cabinet.	<ul style="list-style-type: none"> • Minimalistic view of the Enano on a building • One central location for maintenance or installation • Cost reduction due to centralized power • SELV low voltage cables to the SCULPline 	
Centralized power supply	The power supply is centralized. A small IP67 box including the driver is connected to the wall washer.	<ul style="list-style-type: none"> • Cost reduction due to centralized power • SELV low voltage cables to the SCULPline 	
Not centralized	Both driver and power supply are in a IP67 box, connected to the SCULPline.	<ul style="list-style-type: none"> • If you need to cover very long lengths 	