

PRODUCT OVERVIEW



DIETFURT NATURAL STONE FS-STONE BOX SYSTEMS





RAWE-STONE BOX

CONSTRUCTING TECHNICAL SOLUTIONS USING HIGHEST STANDARDS

Our RAWE-Stone boxes are filled with natural stones and come in a variety of sizes tailored to meet your individual needs.

The innovative system is installed quickly and easily and creates a lasting and stable natural stone wall suited for a variety of different applications.

With different design scopes we can individualize the look based on your personal preferences. Inherent and water permeable spaces allow for vegetation to grow freely and incorporate the stone box with its natural surroundings.

ADVANTAGES OF THE RAWE-STONE BOX:

- **high quality** – high quality stone, filled and compacted at our factory
- **green** – offers living space for plants and animals
- **simple and economical** – constructed quickly
- **reusable** – removable and reusable, also ideal for temporary projects
- **exact and saves space** – can be built up to 7m high with a width of 1m
- **durable and lasting** – protection and aesthetics for generations
- **individualized** – seemingly endless possibilities
- **compatible** – easily incorporated into other systems

USES:

- Landscaping and property development
- Supporting walls for road construction
- Retaining walls for embankments
- Avalanche protection
- Slope protection
- Erosion protection
- Dam protection
- Artistical design and a lot more





RAWE-RANDOM STONE BOX

FOR EMBANKMENT STABILIZATION AND LANDSCAPE DESIGN

Factory filled and compacted

grids welded out of single and double wire,
mesh width 50 × 200 mm,
nominal wire diameter 6/6/6 mm or alternatively 6/5 mm

The galvanization in accordance with DIN EN ISO 1461
applied to all elements after bending and welding, no
ends or weld joints are left ungalvanized.

Minimum corrosion protection of 55 years according to
corrosiveness category C3 with a galvanization
degradation rate of approx. 1µm per year in accordance
with DIN EN ISO 12944.

Stone Boxes filled with Dietfurt Dolomite®
grain size Ø approx. 63/100 mm

Dimensions L × T × H:

50 × 50 × 50 cm	(approx. 200 kg/box)
100 × 50 × 50 cm	(approx. 390 kg/box)
150 × 50 × 50 cm	(approx. 600 kg/box)
200 × 50 × 50 cm	(approx. 780 kg/box)
100 × 50 × 100 cm	(approx. 780 kg/box)
150 × 50 × 100 cm	(approx. 1.170 kg/box)
200 × 50 × 100 cm	(approx. 1.600 kg/box)

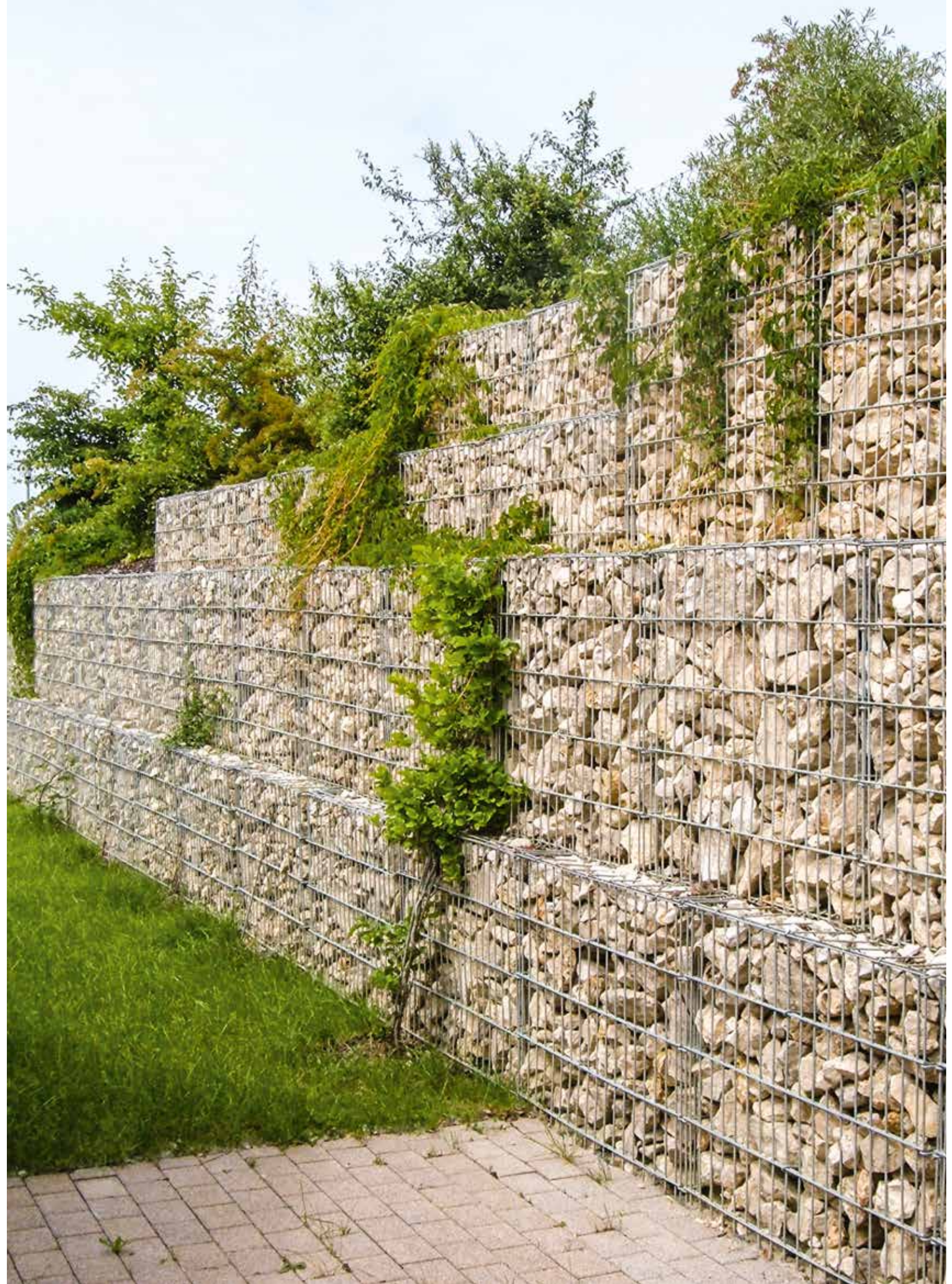
100 × 100 × 50 cm	(approx. 780 kg/box)
150 × 100 × 50 cm	(approx. 1.170 kg/box)
200 × 100 × 50 cm	(approx. 1.600 kg/box)
100 × 100 × 100 cm	(approx. 1.600 kg/box)
150 × 100 × 100 cm	(approx. 2.400 kg/box)
200 × 100 × 100 cm	(approx. 3.200 kg/box)

100 × 76 × 100 cm	(approx. 1.200 kg/box)
200 × 76 × 100 cm	(approx. 2.400 kg/box)
100 × 76 × 120 cm	(approx. 1.440 kg/box)
200 × 76 × 120 cm	(approx. 2.880 kg/box)
100 × 76 × 140 cm	(approx. 1.680 kg/box)
200 × 76 × 140 cm	(approx. 3.360 kg/box)

Additional accessories:

bench rest, fence and gate elements available upon
request.

for extensions and executions of safety barriers, fences,
gates, masts etc.





RAWE-PUZZLE STONE BOX

FOR EMBANKMENT STABILIZATION AND
LANDSCAPE DESIGN

Factory filled and compacted

Grids welded out of single and double wire,
mesh width 50 × 200 mm,
nominal wire diameter 6/6/6 mm or alternatively 6/5 mm

The galvanization in accordance with DIN EN ISO 1461
applied to all elements after bending and welding, no
ends or weld joints are left ungalvanized.

Minimum corrosion protection of 55 years according to
corrosiveness category C3 with a galvanization
degradation rate of approx. 1µm per year in accordance
with DIN EN ISO 12944.

Front side hand-arranged with Dietfurt Dolomite®
diameter ø approx. 80/220 mm

Filled with Dietfurt Dolomite®
diameter ø approx. 63/100 mm

Dimensions L × T × H:

50 × 50 × 50 cm	(approx. 200 kg/box)
100 × 50 × 50 cm	(approx. 390 kg/box)
150 × 50 × 50 cm	(approx. 600 kg/box)
200 × 50 × 50 cm	(approx. 780 kg/box)
100 × 50 × 100 cm	(approx. 780 kg/box)
150 × 50 × 100 cm	(approx. 1.170 kg/box)
200 × 50 × 100 cm	(approx. 1.600 kg/box)

100 × 100 × 50 cm	(approx. 780 kg/box)
150 × 100 × 50 cm	(approx. 1.170 kg/box)
200 × 100 × 50 cm	(approx. 1.600 kg/box)
100 × 100 × 100 cm	(approx. 1.600 kg/box)
150 × 100 × 100 cm	(approx. 2.400 kg/box)
200 × 100 × 100 cm	(approx. 3.200 kg/box)

100 × 76 × 100 cm	(approx. 1.200 kg/box)
200 × 76 × 100 cm	(approx. 2.400 kg/box)

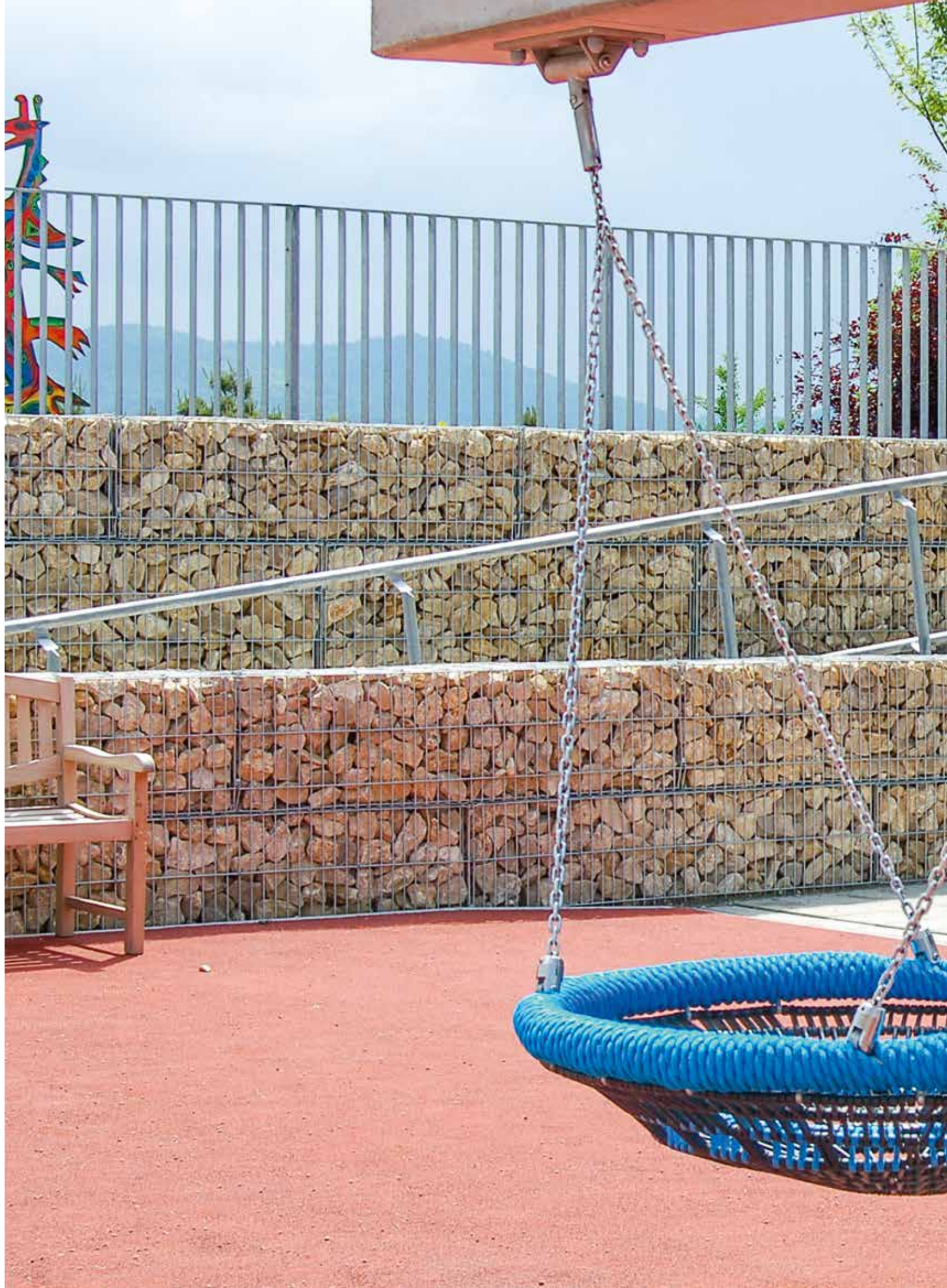
Surcharge for additional finished sides:

ø approx. 80/220 mm

Additional accessories:

bench rest, fence and gate elements available upon
request.

for extensions and executions of safety barriers, fences,
gates, masts etc.





RAWE CRAZY-PAVING STYLE STONE BOX

FOR EMBANKMENT STABILIZATION AND
LANDSCAPE DESIGN

factory filled and compacted

grids welded out of single and double wire,
mesh width 50 × 200 mm,
nominal wire diameter 6/6/6 mm or alternatively 6/5 mm

The galvanization in accordance with DIN EN ISO 1461
applied to all elements after bending and welding, no
ends or weld joints are left ungalvanized.

Minimum corrosion protection of 55 years according to
corrosiveness category C3 with a galvanization
degradation rate of approx. 1µm per year in accordance
with DIN EN ISO 12944.

Front side natural crust with
Dietfurt Limestone gala®

Filled with Dietfurt Dolomite®
diameter Ø approx. 63/100 mm

Dimensions L × T × H:

50 × 50 × 50 cm	(approx. 200 kg/box)
100 × 50 × 50 cm	(approx. 390 kg/box)
150 × 50 × 50 cm	(approx. 600 kg/box)
200 × 50 × 50 cm	(approx. 780 kg/box)
100 × 50 × 100 cm	(approx. 780 kg/box)
150 × 50 × 100 cm	(approx. 1.170 kg/box)
200 × 50 × 100 cm	(approx. 1.600 kg/box)
100 × 100 × 50 cm	(approx. 780 kg/box)
150 × 100 × 50 cm	(approx. 1.170 kg/box)
200 × 100 × 50 cm	(approx. 1.600 kg/box)
100 × 100 × 100 cm	(approx. 1.600 kg/box)
150 × 100 × 100 cm	(approx. 2.400 kg/box)
200 × 100 × 100 cm	(approx. 3.200 kg/box)

100 × 76 × 100 cm	(approx. 1.200 kg/ box)
200 × 76 × 100 cm	(approx. 2.400 kg/box)

Surcharge for additional finished sides:
Dietfurt Limestone gala®

Additional accessories:

Bench rest, fence and gate elements available upon
request.

For extensions and executions of safety barriers, fences,
gates, masts etc.





RAWE-ROMAN STYLE STONE WALL BOX

FOR EMBANKMENT STABILIZATION AND
LANDSCAPE DESIGN

factory filled and compacted

grids welded out of single and double wire,
mesh width 50 × 200 mm,
nominal wire diameter 6/6/6 mm or alternatively 6/5 mm

The galvanization in accordance with DIN EN ISO 1461
applied to all elements after bending and welding, no
ends or weld joints are left ungalvanized.

Minimum corrosion protection of 55 years according to
corrosiveness category C3 with a galvanization
degradation rate of approx. 1µm per year in accordance
with DIN EN ISO 12944.

Front side roman style wall
height approx. 80 mm to 230 mm, tumbled

Filled with Dietfurt Dolomite®
diameter ø approx. 63/100 mm

Dimensions L × T × H:

50 × 50 × 50 cm	(approx. 200 kg/box)
100 × 50 × 50 cm	(approx. 390 kg/box)
150 × 50 × 50 cm	(approx. 600 kg/box)
200 × 50 × 50 cm	(approx. 780 kg/box)
100 × 50 × 100 cm	(approx. 780 kg/box)
150 × 50 × 100 cm	(approx. 1.170 kg/box)
200 × 50 × 100 cm	(approx. 1.600 kg/box)
100 × 100 × 50 cm	(approx. 780 kg/box)
150 × 100 × 50 cm	(approx. 1.170 kg/box)
200 × 100 × 50 cm	(approx. 1.600 kg/box)
100 × 100 × 100 cm	(approx. 1.600 kg/box)
150 × 100 × 100 cm	(approx. 2.400 kg/box)
200 × 100 × 100 cm	(approx. 3.200 kg/box)
100 × 76 × 100 cm	(approx. 1.200 kg/box)
200 × 76 × 100 cm	(approx. 2.400 kg/box)

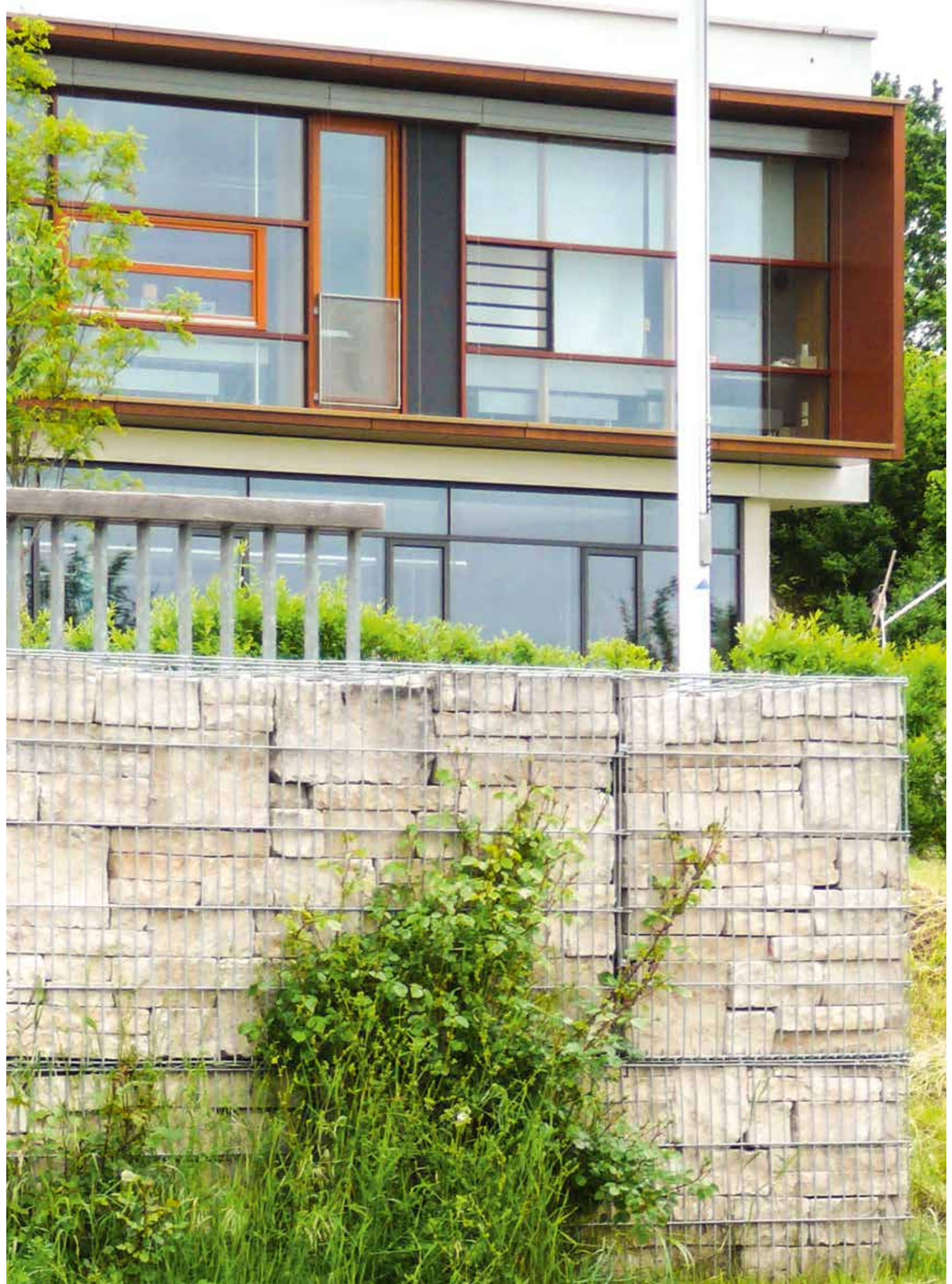
Surcharge for additional finished sides:

Dietfurt Limestone gala®
Dietfurt Dolomite®

Additional accessories:

Bench rest, fence and gate elements available upon
request.

For extensions and executions of safety barriers, fences,
gates, masts etc.





FS-STONE FENCE COMPONENTS

Consisting of two L-shaped grids with manufactured 180° S-shaped hooks, including cross beams and flatclamps. Pieces delivered separately for on-site assembly and filling

Double wire welded grid
Nominal wire diameter 6/5/6 mm
Mesh width 50 x 200 mm

The galvanization in accordance with DIN EN ISO 1461 applied to all elements after bending and welding, no ends or weld joints are left ungalvanized.

Minimum corrosion protection of 55 years according to corrosiveness category C3 with a galvanization degradation rate of approx. 1µm per year in accordance with DIN EN ISO 12944.

crushed stone Dietfurt Dolomite®
diameter Ø approx. 63/100 mm

Dimensions L x W x H:
(Consisting of 2 L-shaped grids incl. cross beam)

FS-Stone box element
Systeme width approx. 25,0 cm FS-Stone fence pillar

103 x 25 x 80 cm	25 x 25 x 80 cm
103 x 25 x 100 cm	25 x 25 x 100 cm
103 x 25 x 120 cm	25 x 25 x 120 cm
103 x 25 x 140 cm	25 x 25 x 140 cm
103 x 25 x 160 cm	25 x 25 x 160 cm
103 x 25 x 180 cm	25 x 25 x 180 cm
103 x 25 x 200 cm	25 x 25 x 200 cm

202 x 25 x 80 cm	45 x 45 x 80 cm
202 x 25 x 100 cm	45 x 45 x 100 cm
202 x 25 x 120 cm	45 x 45 x 120 cm
202 x 25 x 140 cm	45 x 45 x 140 cm
202 x 25 x 160 cm	45 x 45 x 160 cm
202 x 25 x 180 cm	45 x 45 x 180 cm
202 x 25 x 200 cm	45 x 45 x 200 cm

Additional sizes available in factors of 20 cm upon request.

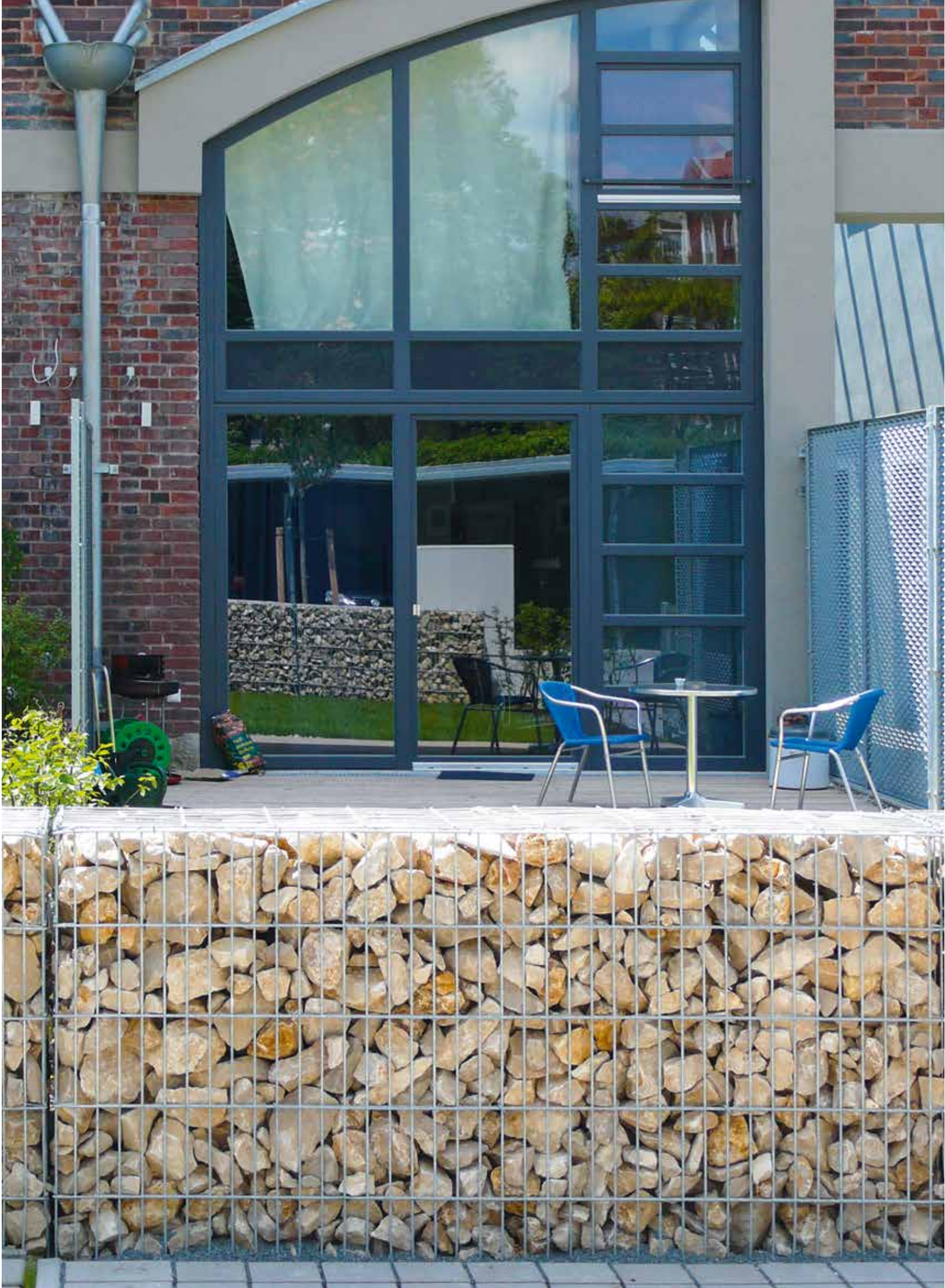
Additional accessories:
FS-Stone box element

cap/base,
for stone wall
(incl. C-hooks)
L = 100 cm
L = 200 cm

pillar
(incl. screw hooks)
60/40/2 mm, galvanized
L = 100 cm
L = 150 cm
L = 200 cm
L = 250 cm

Additional accessories:
FS-Stone fence pillar

cap/base,
for stone wall
(incl. C-hooks)
25/25 cm
45/45 cm





FACADE AND PRIVACY COMPONENTS

Single component stone box welded together for on site filling, system width approx. 12,5 cm

Double wire welded grid
Nominal wire diameter 6/5/6 mm
Mesh width 25 x 200 mm

The galvanization in accordance with DIN EN ISO 1461 applied to all elements after bending and welding, no ends or weld joints are left ungalvanized.

Minimum corrosion protection of 55 years according to corrosiveness category C3 with a galvanization degradation rate of approx. 1µm per year in accordance with DIN EN ISO 12944.

broken & crushed stone Dietfurt Dolomite®
diameter Ø approx. 32/56 mm

Dimensions L × W × H:
(Necessary cross beams included)

99 × 12,5 × 80 cm
99 × 12,5 × 100 cm
99 × 12,5 × 120 cm
99 × 12,5 × 140 cm

199 × 12,5 × 80 cm
199 × 12,5 × 100 cm
199 × 12,5 × 120 cm
199 × 12,5 × 140 cm

Additional sizes available in factors of 20 cm upon request.

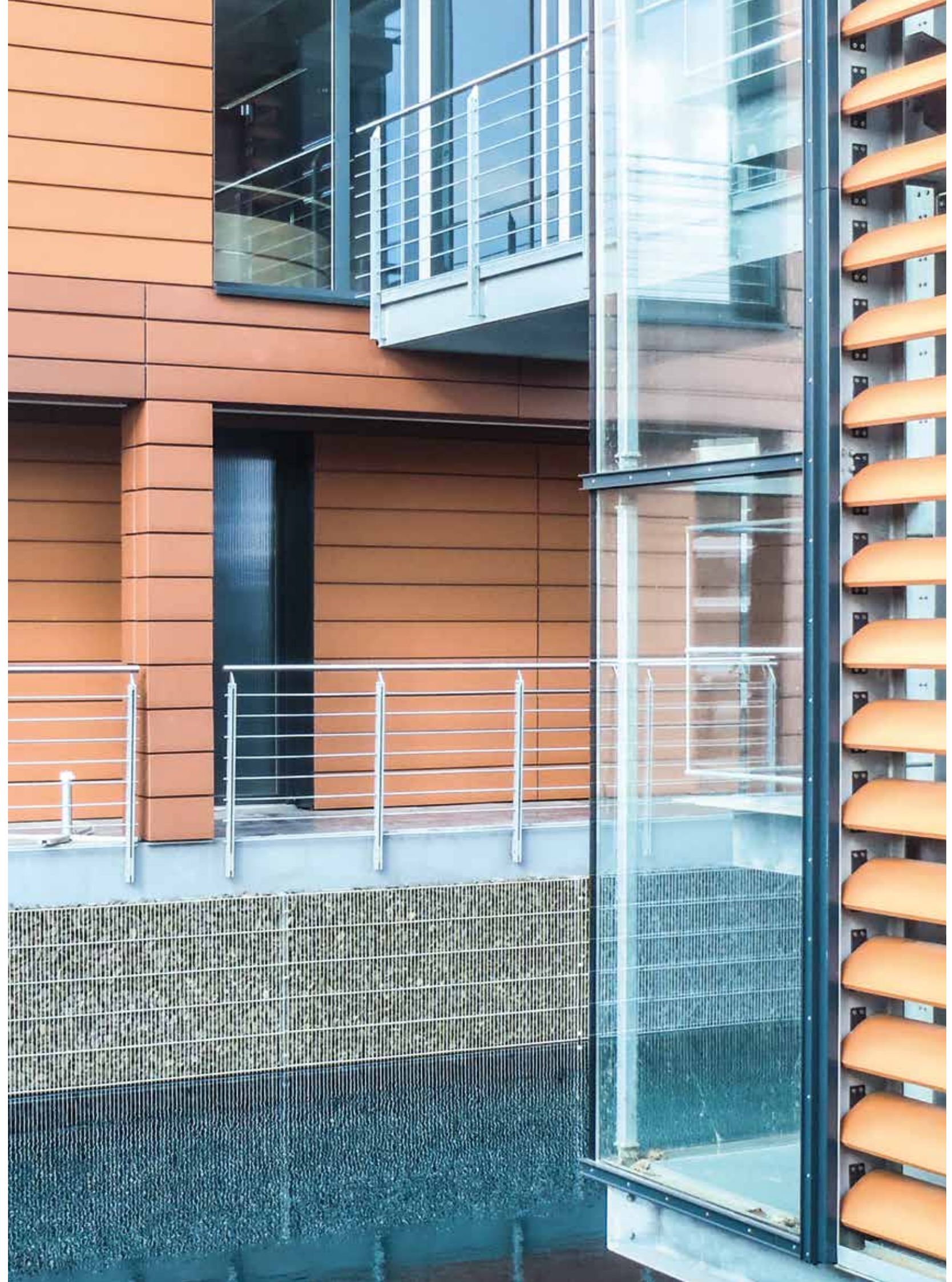
without base or with welded base available.

Additional accessories:
Fassade and privacy components

cap/base,
for stone wall
(incl. C-hooks)
L = 97 cm
L = 197 cm

Anchor plate
for foundation fixation (screw not included)

Anchor plate
for wall fixation (screw not included)
L = 8,5 cm





HIGHLY ABSORPTIVE/ABSORPTIVE NOISE CANCELLING SELF-SUPPORTING

Noise barrier consisting of factory filled and compacted RAWE Stone boxes with integrated noise absorption system.

Double wire welded grid, mesh width 50 x 200 mm

Hot dip galvanization for all pieces in accordance with EN ISO 1461, after cutting, bending and welding.

Minimum lifetime of the hot dip galvanization is about 55 years in the corrosive category C3 by a degradation rate of 1µm in accordance with EN ISO 12944.

The sonic study values and testing are in accordance with ZTV-Lsw06/DIN EN 1793-1 und DIN EN 1793-2.

highly absorptive: Typ 10

absorptive: Typ 7

Foundation:

Concrete installation plane (min. 15 cm, min. C25/30) on top of a compacted mineral anti-frost layer.

Filling:

High quality Dietfurt Dolomite®. (alternative filling available upon request)

Available sizes:

Wall thickness L x T x H:

100 x 50 x 100 cm	(approx. 800 kg/box)
200 x 50 x 100 cm	(approx. 1.600 kg/box)

100 x 75 x 100 cm	(approx. 1.200 kg/box)
100 x 75 x 120 cm	(approx. 1.440 kg/box)
100 x 75 x 140 cm	(approx. 1.680 kg/box)
200 x 75 x 100 cm	(approx. 2.400 kg/box)
200 x 75 x 120 cm	(approx. 2.880 kg/box)
200 x 75 x 140 cm	(approx. 3.360 kg/box)

100 x 100 x 100 cm	(approx. 1.600 kg/box)
100 x 100 x 120 cm	(approx. 1.920 kg/box)
100 x 100 x 140 cm	(approx. 2.240 kg/box)
200 x 100 x 100 cm	(approx. 3.200 kg/box)
200 x 100 x 120 cm	(approx. 3.840 kg/box)
200 x 100 x 140 cm	(approx. 4.480 kg/box)

To achieve the quoted values of noise prevention the installation must occur according to the specifications of the supplier.

We are happy to assist with any consultation for the realization of your noise barrier. Rights reserved for technical adjustments.





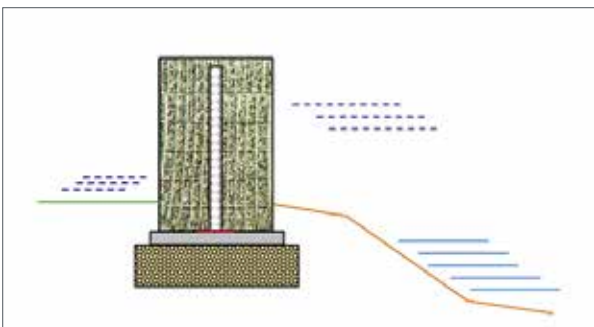
APPLICATION OF GEOGRID FOR KBE-CONSTRUCTIONS
 RAWE-STONE BOXES WITH INTEGRATED HOOKUP FOR REAR ANCHORAGE WITH:

- system testing
- structural analysis
- frictional connection



FLOOD PROTECTION
 RAWE-STONE BOXES WITH INTEGRATED NON PERMEABLE MAT WITH:

- permanent and temporary dam construction
- controlled discharge and drainage
- bank- and shoreline stabilization





INTEGRATION OF TRANSPARENT ELEMENTS

RAWE-STONE BOXES WITH INTEGRATED TUBULAR OR ANCHOR PLATE FOR:

- transparent attachments
- "windows"
- transparent intermediate elements



SYSTEM CONNECTIONS

RAWE-STONE BOXES WITH ADAPTATIONS OR TRANSITIONS FOR:

- beams and posts of conventional wall systems
- service- and emergency doors
- ball catching fence
- corners
- curves and segments
- benches



FS-Lärmschutzwand®





PLEASE ASK US ABOUT OUR OTHER OFFERINGS:

INTERIORS
FACADES
WALL COVERINGS
GARDEN AND LANDSCAPING



WWW.FRANKEN-SCHOTTER.COM • INFO@FRANKEN-SCHOTTER.DE • FAX +49 9142-802-267



MAIN OFFICE DIETFURT

QUARRY • SHOWROOM • SALES

Hungerbachtal 1
91757 Treuchtlingen-Dietfurt
Telephone +49 9142-802-0
Telefax +49 9142-802-267



NATURAL STONE FACTORY PETERSBUCH

Marmorstraße 2
85135 Titting-Petersbuch
Telefon +49 8423-9910-0
Telefax +49 8423-9910-11



NATURAL STONE FACTORY WEGSCHEID

SHOWROOM • SALES

Alte Schernfelder Straße 1
85072 Eichstätt-Wegscheid
Telefon +49 8421-909797-0
Telefax +49 8421-909797-10



Information available upon request:

- Technical data
- Reference pictures - noise barriers
- Reference pictures - RAWE-Stone box
- Installation guidelines
- Static information
- Corrosion protection
- Attachment of geogrids
- Bench support
- Specification texts

OUR SALES TEAM



Ottmar Schielke
sales manager - stone box systems
Phone: +49-9142-802-263
o.schielke@franken-schotter.de



Bernhard Ernst
Phone: +49-9142-802-410
b.ernst@franken-schotter.de



Franken-Schotter GmbH & Co. KG

Hungerbachtal 1
91757 Treuchtlingen-Dietfurt
Germany

Telefon +49 9142 / 802-0
Telefax +49 9142 / 802-267

info@franken-schotter.de
www.franken-schotter.com

