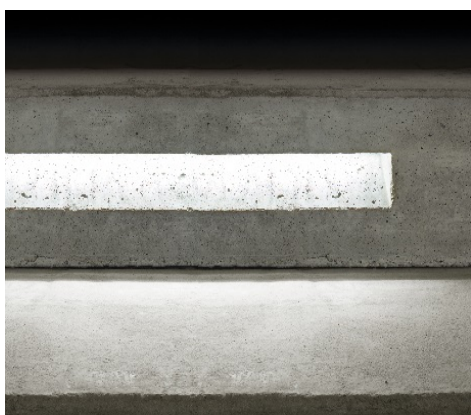


SIMES  
luce per l'architettura

## GHOST by Marc Sadler



*"The architecture is a fact of art, a phenomenon that elicits emotion outside of the problem of construction, beyond them. The construction is to take on, the architecture is to move." Le Corbusier*



The Ghost range of products represents a revolution in understanding light in relation to the materials of the architecture itself: light does not only unfold and bring out the features of space, but becomes mass itself. When Ghost is off, the light vanishes and removes itself from the architecture. The light source integrates itself completely in the void until it disappears almost altogether. What is perceived is only the light and its effect on the surrounding space. Architecture becomes thus a shell of "dynamic" surfaces of voids and fullness of light that directly derives from the material, following the creative path the lighting designer had imagined.



[www.simes.it/ghost](http://www.simes.it/ghost)

**Brand:** SIMES

**Famiglia:** Ghost

**Designer:** Marc Sadler

**Installazione:** Recessed Light Fixture

**Grado di protezione IP:** IP65

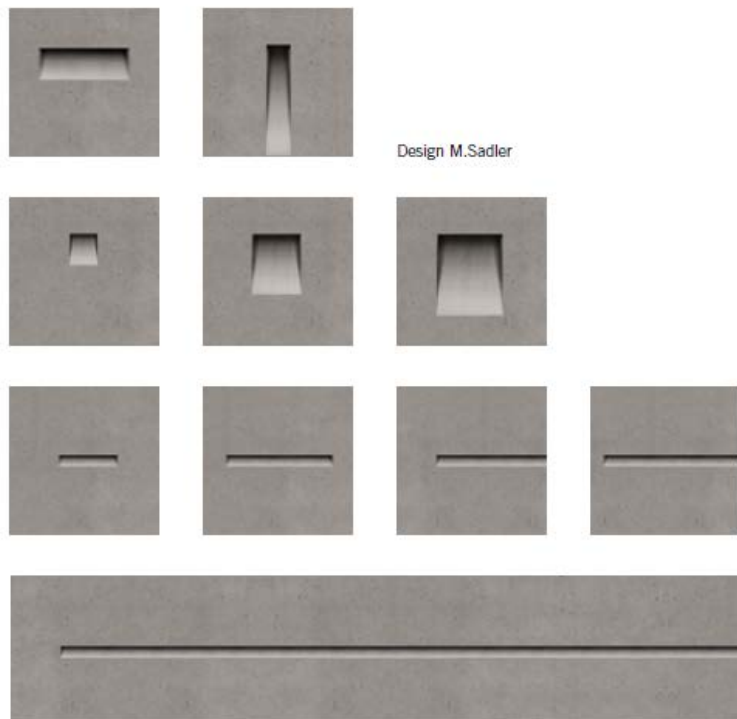
[MARC SADLER INTERVIEW](#)

[LIGHTNBLOGAZINE](#)

[GHOST TECHNICAL VIDEO](#)

# SIMES

luce per l'architettura



*The light blade comes from the concrete.  
When it's off, it disappears. No artifice,  
just a cut in the concrete with brutal and  
magic inspiration: actually a technical  
prodigy, directly casted into the concrete,  
the product of a sophisticated and  
invisible genius to fuse architecture and  
light in a natural way.*

*M. Sadler*

Ghost brings total aesthetical integration between light and architecture. The integrated illumination easily blends itself with different environments and facilitates the job to aesthetically adapt the luminaires to the architecture and relate to the context. The envelope of the building is understood as a means of communication between the interior and the exterior and also as an active element reporting with the urban dimension. It is a surface open to new design expressions that will not only aim at constructing but also at exciting.



reddot award 2016  
winner

2016



2016



2016



2017





# SIMES

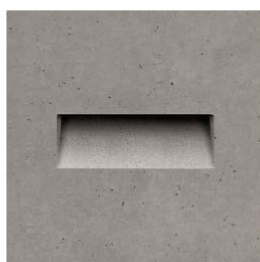
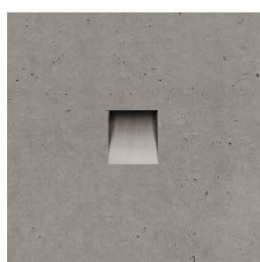
luce per l'architettura



For minimum  
10 cm insulation  
thick panel



For construction  
material to be  
plastered



For cast concrete

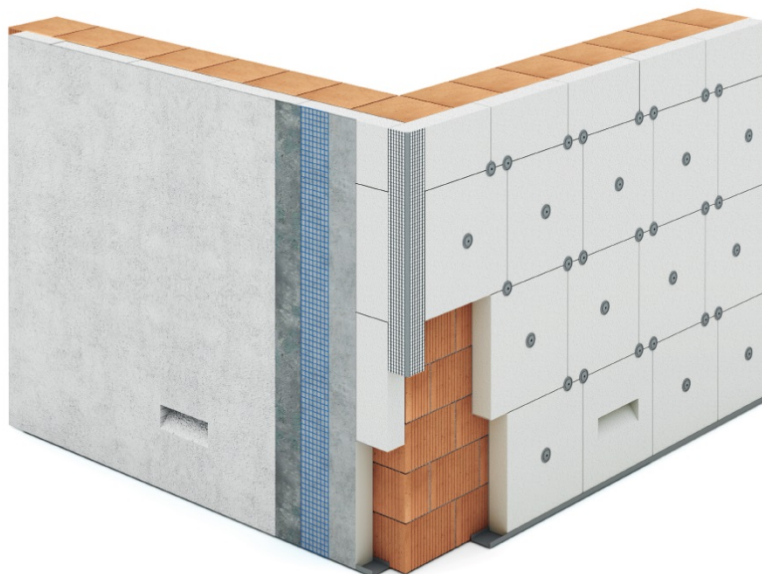
The Ghost range originates from a simple but revolutionary idea that thanks to a careful engineering became an industrial product: to create out-and-out luminous cavities inside the material and to conceal the lighting body as to make the light the only and unique player in the architecture. This concept which was initially conceived for cast concrete walls in place; now it comes in new innovative variants that turn it into a product suitable for many construction materials: insulation panels, walls in clay or breeze blocks or other materials to be plastered.

[VIDEO](#) Ghost for concrete

[VIDEO](#) Ghost for insulation panels

[VIDEO](#) Ghost for materials to be plastered

## Ghost for insulation panel



Ghost for insulation panel may be installed inside the exterior insulating panel. The degree of insulation of the house will stay unchanged for it is manufactured of the same type of polystyrene insulation. Attention should be paid though to the positioning of the corrugated tube for electrification. The height of Ghost for insulation panel has been designed to take on standard AED35 (50cm) insulating blocks while the thickness (10 cm) facilitates the integration in insulating panels with the same or greater thickness. The cavity is pre-finished and ready for painting.

Ghost for breeze block application is easily applied in walls made of perforated bricks or cement conglomerate. The product is designed to be wall mounted and completely integrated with the architecture of which it will take over the finish. The cavity is pre-finished and ready for painting.

## Erected wall in place in clay



## Erected wall in place in breeze



### About Simes

SIMES has been in business since 1973 and, over the years, it has built up considerable expertise that it uses to keep its brand at the forefront of the outdoor lighting market. Light is seen almost as an elegant, discreet form of writing, building on a simplicity of form to seamlessly integrate lighting into architecture. SIMES optics delicately merge technology and design as the company often turns to international designers in its quest to exalt light and material, forging new material shapes and solutions for outdoor lighting. SIMES works with architects, landscape and urban designers, engineers, public and private entities, and its team of designers and lighting experts provide support throughout the project, from idea to creation.

Follow us on our [Web Site](#), [Blog](#), [Facebook](#), [Pinterest](#), [LinkedIn](#), [Instagram](#) and [Vimeo](#)

For press enquiries please contact: Erika Fratus Tel. +39 (0)30 9860464 Mail [erika.fratus@simes.com](mailto:erika.fratus@simes.com)