



Access a New Level of  
**Digital Architectural Glass**

## Design Freedom and Functionality Control

The latest innovations in glass printing technology open new opportunities to combine boundless creativity with highly controlled functionality. Full expression of vision and outstanding budget-smart performance delivery are now possible with digital ceramic glass printing.

- **Easy implementation**

Of any pattern or design, with unlimited colors, and high resolution for fine details.

- **Durability and accuracy**

Inks are fused into the glass, providing unmatched resistance to scratching, acid, UV light and weather. Precise micro-drop printing allows accurate photorealistic and graphic designs.

- **A new medium for expression**

The ability to combine transparent, translucent and opaque details in any way, full freedom in colors and shades, and the possibility to create double-vision designs for different front and back experiences, are moving glass printing into the realm of tools for design.

## Outstanding Functional Performance

Dip-Tech's solution for digital ceramic glass printing meets complex functional performance requirements. It enables control of all special elements of architectural and designed glass:

- **Translucency/opacity**
- **Light diffusion and transmission**
- **Energy efficiency**
- **Privacy levels**
- **Slip resistance**
- **Anti-bird collision**

## Sustainable Architecture

Dip-Tech's printed glass meets environmentally responsible architecture goals:

- The glass is recyclable and offers eco-friendly functionality.
- Using this technology can assist with LEED and other environmental certification.
- The printed glass contains no toxic heavy metals.
- It is an excellent building material for preventing bird collision.
- Printing a new design on glass panels is well-suited to urban renewal projects where redesigning only parts of buildings is preferable to demolition and rebuilding.
- Over time, if elements need to be replaced or added, individual glass panels can be printed and perfectly matched to the existing panels, eliminating the cost and waste of more extensive refurbishment.

## Budget-Smart Design

From the initial design stage, through the value engineering process, Dip-Tech assists architects, designers and consultants with calculating the long-term savings enabled by digital ceramic printed glass. If needed, Dip-Tech helps evaluate alternative ways of using digital glass printing, so that printed glass elements can be kept in a project, even as budgets change over time.

---

**A NEW ERA**  
In Digital Ceramic Glass Printing



# ST-LAURENT SPORTS COMPLEX

Quebec, Canada

ARCHITECT  
**Saucier+Perrotte Architectds /  
Hughes Condon Marler Architects**

PRINTED BY  
**Laurier, Canada**

PHOTOGRAPHER  
**Sebastien Forget Major**

## SPECIFICATIONS

PRINTED AREA  
**1100sqm / 11840sqft**

NUMBER OF PANELS  
**400**

COLORS  
**Dip-Tech White**

GLASS TYPE  
**6mm ultra clear**





# ROUEN MEDICAL TRAINING CENTER

Pouen, Normandie, France

ARCHITECT  
**Vib architecture, Murielle MONIER**

PRINTED BY  
**Macocco**

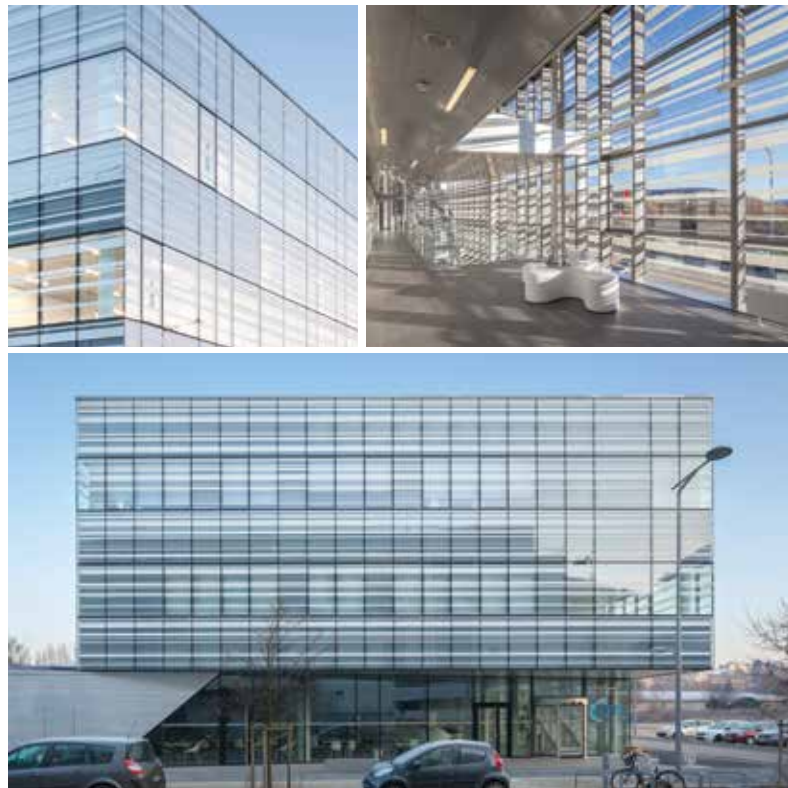
## SPECIFICATIONS

PRINTED AREA  
**1200sqm / 12916sqft**

NUMBER OF PANELS  
**750**

COLORS  
**Dip-Tech White**

GLASS TYPE  
**High performance Insulating  
Glass units, argon filled spacer,  
and low-E laminated pane**





# MONTMAGNY COURTHOUSE

Montmagny, Canada

ARCHITECT  
**CCM2+**

PRINTED BY  
**Laurier Glass**

PHOTOGRAPHER  
**Stephane Groleau**

## SPECIFICATIONS

PRINTED AREA  
**245sqm / 2637sqft**

NUMBER OF PANELS  
**170**

COLORS  
**Dip-Tech Digital Mix**

GLASS TYPE  
**6 mm tempered**



---

# SHENTON HOUSE

---

Western Australia

---

ARCHITECT  
**Meyer Shircore Architects**

PRINTED BY  
**Cooling Brothers Glass Company**

PHOTOGRAPHER  
**Trevor Soh David Morcombe**

## SPECIFICATIONS

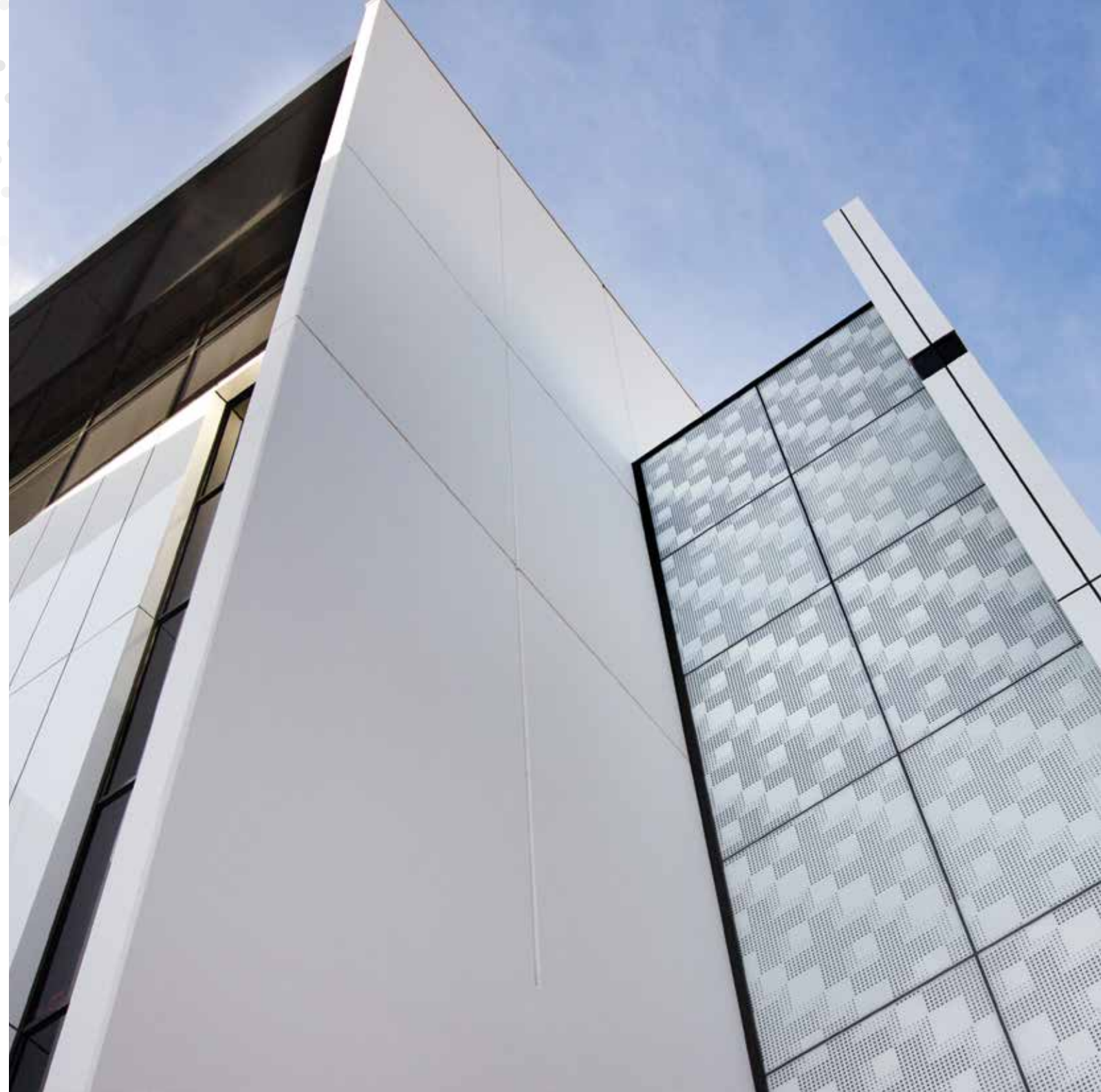
PRINTED AREA  
**190sqm / 2045sqft**

NUMBER OF PANELS  
**33**

COLORS  
**Dip-Tech Digital Mix**

GLASS TYPE  
**8 mm toughened**

---





---

# UTC CAMBRIDGE

---

Cambridge, England

---

ARCHITECT  
**Hawkins Brown**

ARTIST  
**Jo Chapman**

PRINTED BY  
**Toughglaze**

## SPECIFICATIONS

PRINTED AREA  
**45sqm / 484sqft**

COLORS  
**Dip-Tech Digital Mix**

---





---

# WTC P-HUS

---

Lund, Sweden

---

PRINTED BY  
**JYC - POBO Group**

## SPECIFICATIONS

PRINTED AREA  
**2677sqm / 28819sqft**

COLORS  
**Dip-Tech Digital Mix**

---





# VAN WIJNEN HARDERWIJK WEESP

Noord-Holland The Netherlands

ARCHITECT  
**RS Architects**

PRINTED BY  
**Balink Glass Aluminium**

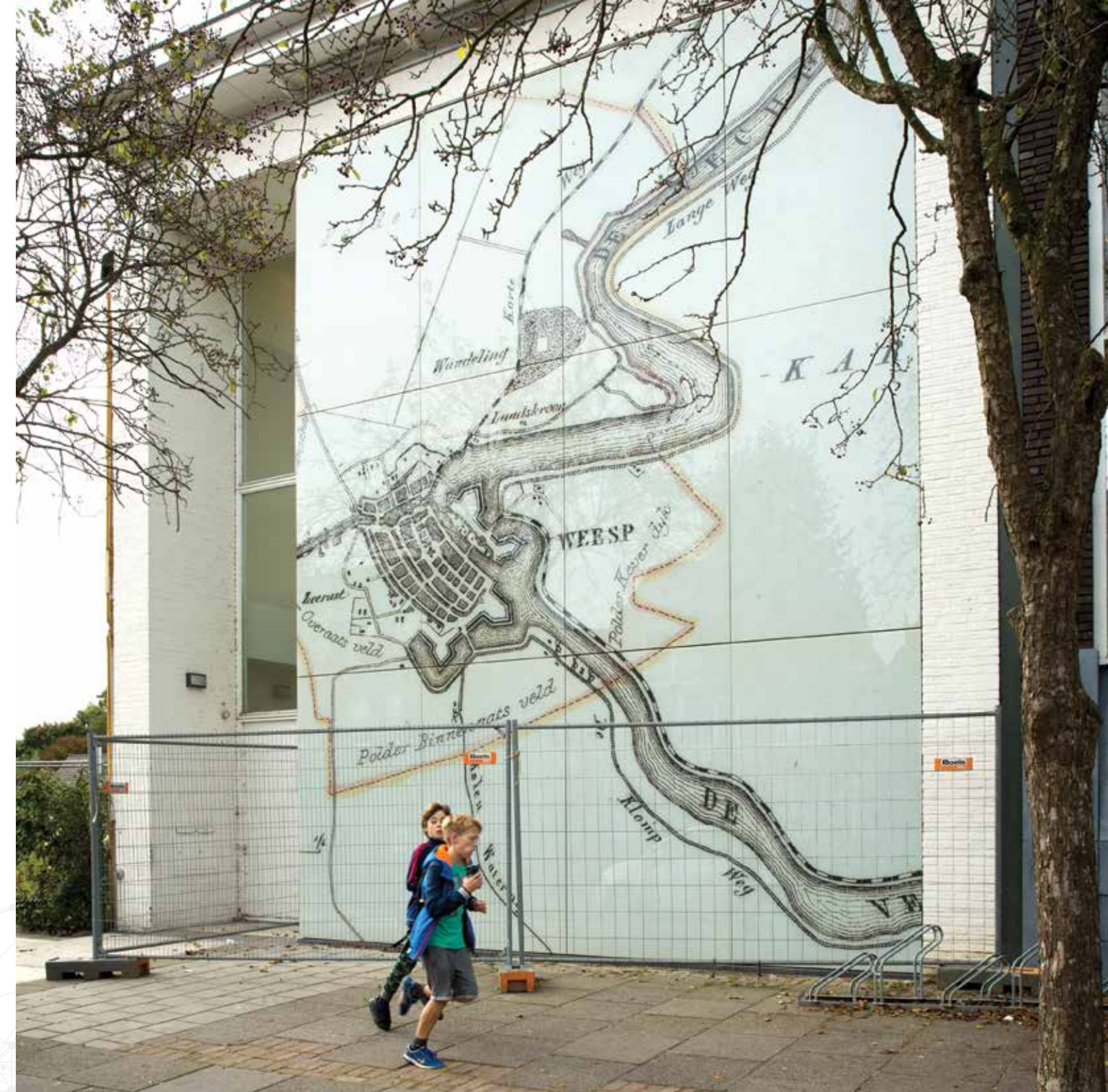
## SPECIFICATIONS

PRINTED AREA  
**55sqm / 591sqft**

NUMBER OF PANELS  
**15**

COLORS  
**Dip-Tech Digital Mix**

GLASS TYPE  
**8 mm low iron tempered**





# HE FEI SALES CENTER

An hui, China

ARCHITECT  
**Wuxi Qing Gong Design institute**

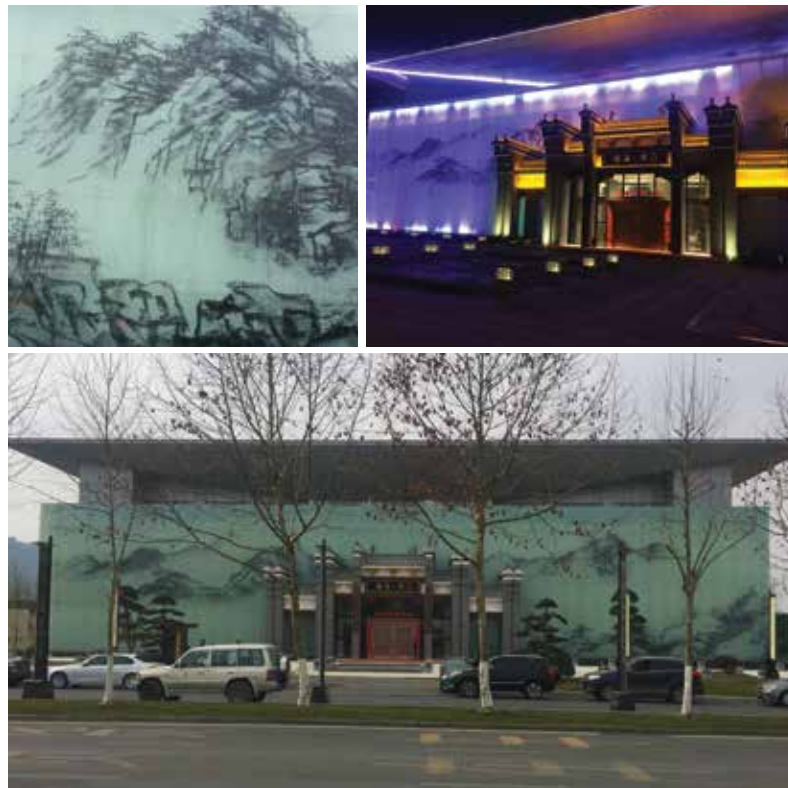
PRINTED BY  
**Hua Yue Glass**

## SPECIFICATIONS

PRINTED AREA  
**1300sqm / 13993sqft**

COLORS  
**Dip-Tech Black**

GLASS TYPE  
**12mm low-iron glass**





---

# AL JAMEA TUS SAIFIYAH

---

Karen ,Nairobi County

---

ARCHITECT  
**FX Fowle Architects**

PRINTED BY  
**Impala Glass**

PHOTOGRAPHER  
**Huzeifa Hakimi - Imagious Studio**

## SPECIFICATIONS

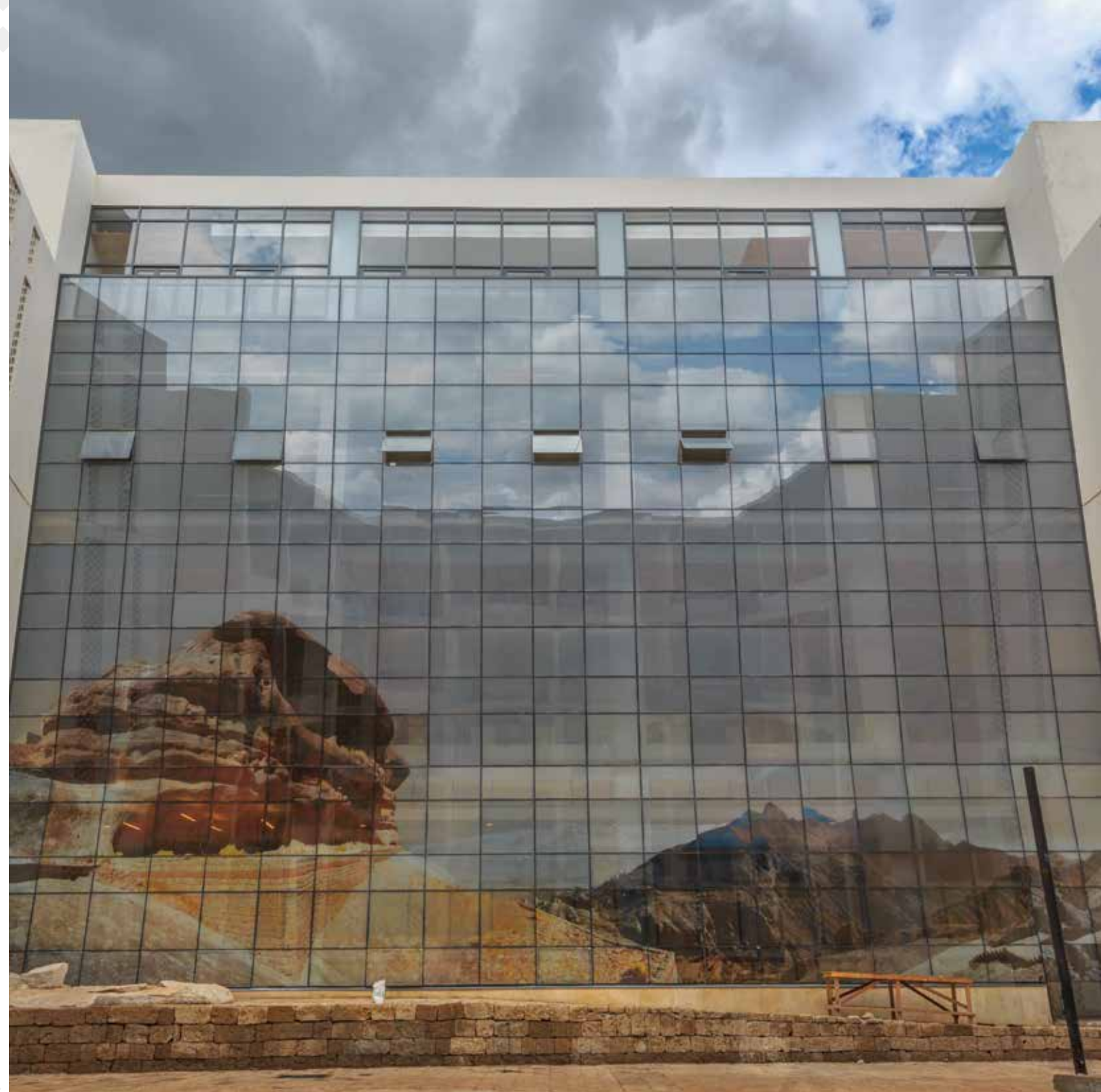
PRINTED AREA  
**800sqm / 8611sqft**

NUMBER OF PANELS  
**400**

COLORS  
**Dip-Tech Digital Mix**

GLASS TYPE  
**8mm and 10mm clear toughened  
with digital printing**

---





---

# 7<sup>TH</sup> ST. THOMAS

---

Toronto, Ontario

ARCHITECT  
**Hariri Pontarini Architects**

PRINTED BY  
**Standard Bent Glass**

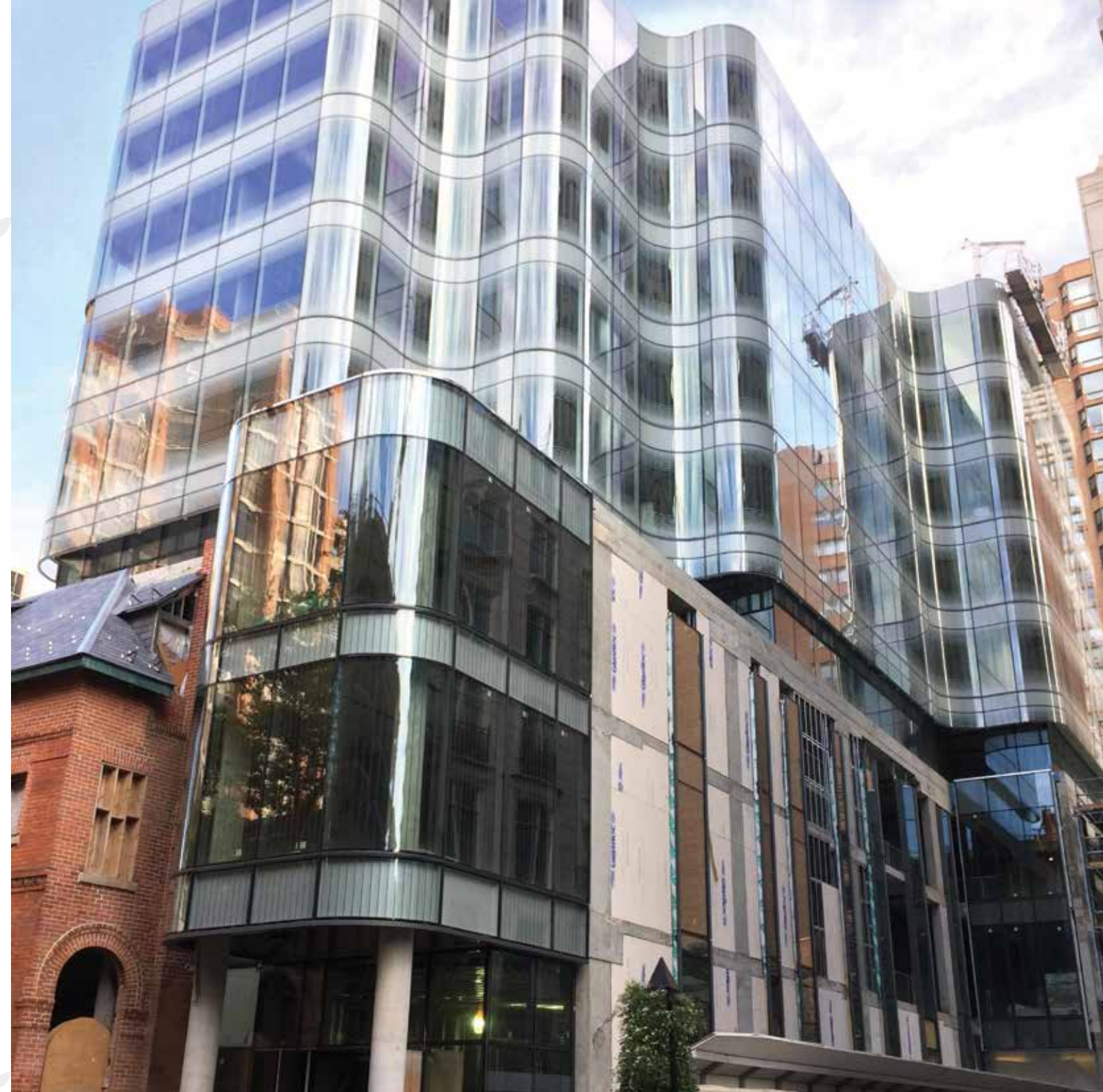
## SPECIFICATIONS

PRINTED AREA  
**706sqm / 7600sqft**

NUMBER OF PANELS  
**240**

COLORS  
**Dip-Tech White**

---





# MANSUETO LIBRARY

Chicago, USA

ARCHITECT  
**Murphy & Jahn**

PRINTED BY  
**Flachglas Wernberg GmbH, Germany**

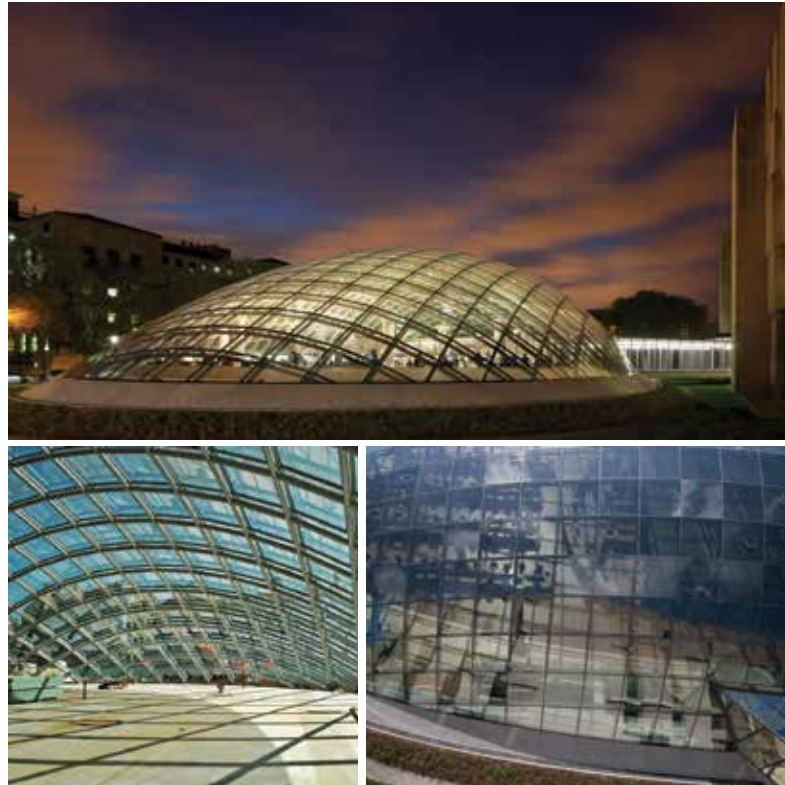
## SPECIFICATIONS

PRINTED AREA  
**2675sqm / 28793 sqft**

NUMBER OF PANELS  
**700 unique panels**

COLORS  
**Dip-Tech Black and White**

GLASS TYPE  
**Tempered, laminated, IG Units**





---

# THINK WHOLE PERSON HEALTHCARE

---

Nebraska, USA

---

ARCHITECT  
**Zero-G**

PRINTED BY  
**Insulite**

PHOTOGRAPHER  
**David Rowland**

## SPECIFICATIONS

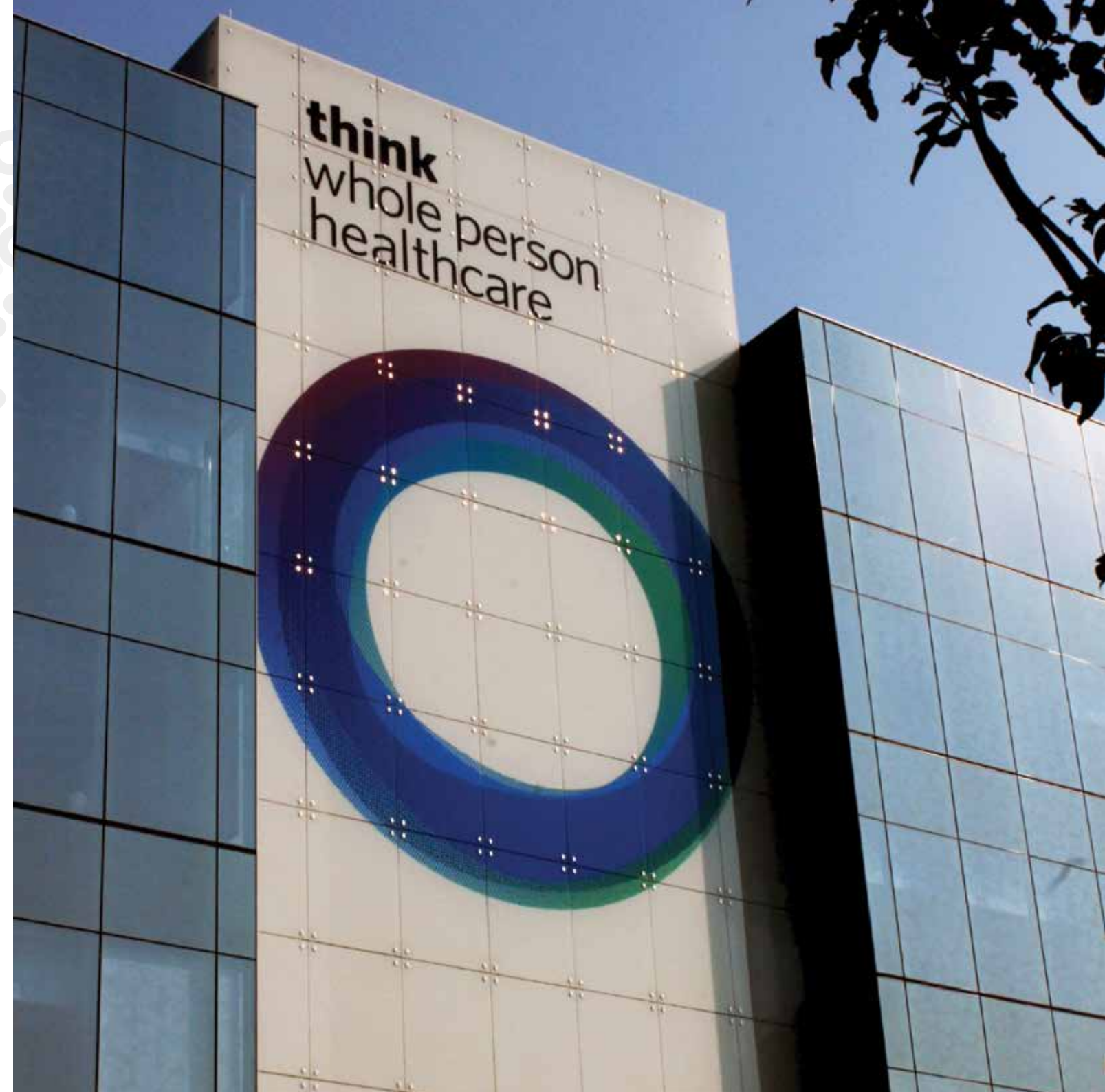
PRINTED AREA  
**300sqm / 3229sqft**

NUMBER OF PANELS  
**90**

COLORS  
**Dip-Tech Digital Mix**

GLASS TYPE  
**Ultra Clear**

---





# ORION

Dubnica nad Váhom, Slovakia

ARCHITECT  
**Infinity Trust**

PRINTED BY  
**Kovac**

## SPECIFICATIONS

PRINTED AREA

**Entire project - 5000sqm / 53820sqft**

**Facade - 2600sqm / 27986sqft**

**Balconies - 250sqm / 2691sqft**

**Interior glass - 2100sqm / 22604sqft**

COLORS

**Dip-Tech Digital Mix**

GLASS TYPE

**6mm, 8mm, 6mm diamond**





# ABBEYWOOD SHOPPING PLAZA

Bristol, United Kingdom

ARCHITECT  
**Haskoll Architects**

PRINTED BY  
**Toughglaze**

## SPECIFICATIONS

PRINTED AREA  
**220sqm / 2368sqft**

NUMBER OF PANELS  
**48**

COLORS  
**Dip-Tech White and Dark Blue**

GLASS TYPE  
**10mm low iron**





---

# 818 PLAZA

---

Shanghai China

---

ARCHITECT  
**Shanghai Jianke Architectural Design  
Institute Co.,Ltd**

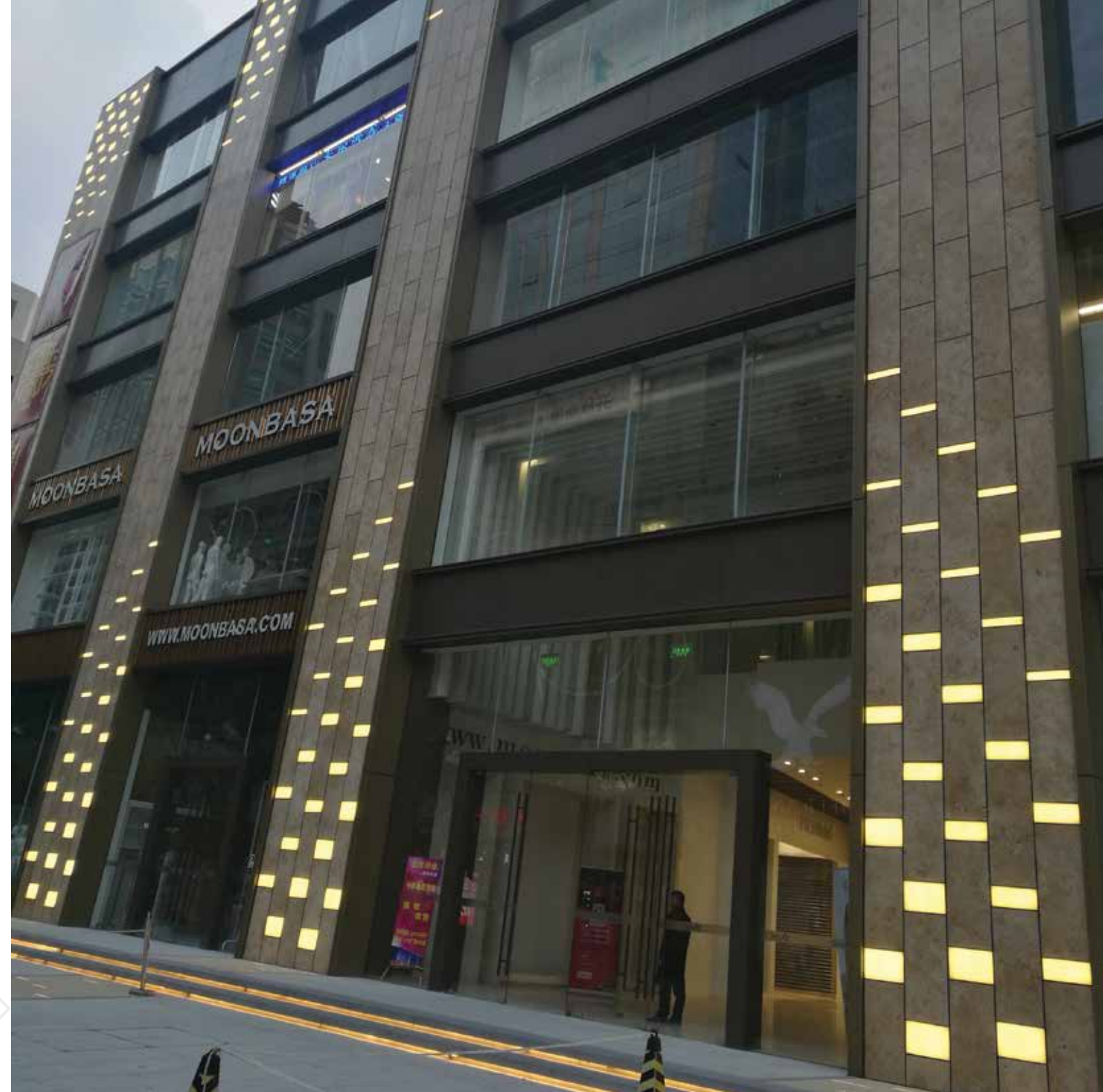
PRINTED BY  
**Hua Yue Glass**

## SPECIFICATIONS

NUMBER OF PANELS  
**590**

COLORS  
**Dip-Tech Green**

---





# McDONALDS FUEL STATION

Batumi, Georgia

ARCHITECT  
**Giorgi Khmaladze Architects**

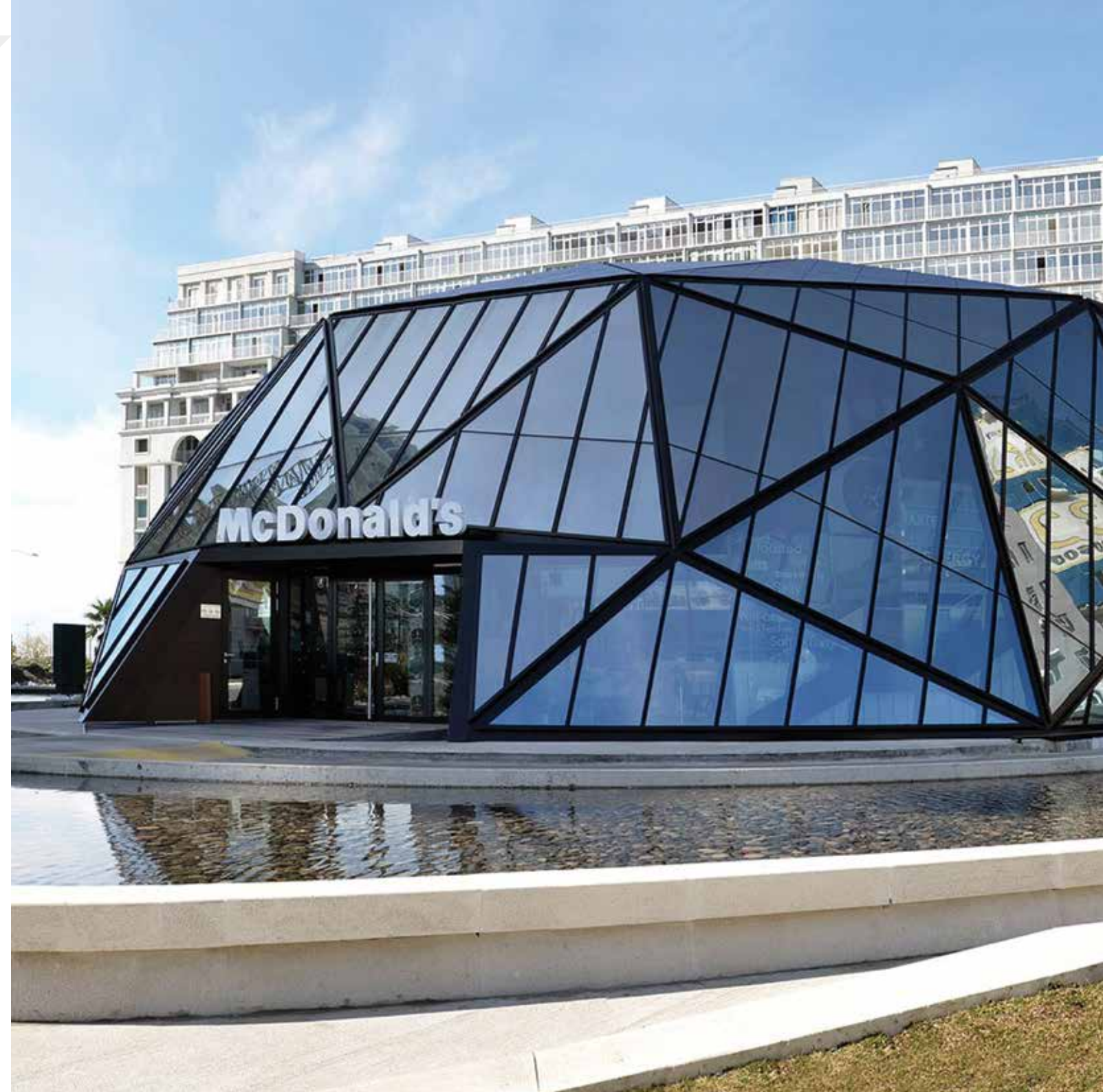
PRINTED BY  
**Gedik CAM**

## SPECIFICATIONS

PRINTED AREA  
**850sqm / 9150sqft**

NUMBER OF PANELS  
**460**

COLORS  
**Dip-Tech Black**





---

## ABOUT DIP-TECH

Dip-Tech, a Ferro company, is the world's leading provider of digital glass printing solutions that combine the durability of ceramic inks with the versatility and quality of digital printing. Dip-Tech provides an unmatched and field-proven solution for all exterior and interior glass printing applications. With a single solution, Dip-Tech helps architects express their artistic vision in façades, curtain walls, windows, dividers, and other glass elements and also meet the full range of functional requirements and sustainable architecture goals.

---



[www.dip-tech.com/Project\\_Gallery](http://www.dip-tech.com/Project_Gallery)

[www.dip-tech.com](http://www.dip-tech.com) | [sales@dip-tech.com](mailto:sales@dip-tech.com)



**FERRO**

Where innovation  
delivers performance™

©2018 Dip-Tech Digital Printing Technologies Ltd. All rights reserved. Dip-Tech, the Dip-Tech logo, and Dip-Tech Spectrum are trademarks or registered trademarks of Dip-Tech Digital Printing Technologies Ltd. and may be protected in certain jurisdictions. All other names and logos are the property of their respective owners. All information is subject to change without notice.