

POHL
SURFACES
INNOVATIVE.
STRIKING.
SUBTLE.

THE RIGHT SURFACE EMPHASIZES
FORM AND FUNCTION OF ANY FACADE

A METAL FACADE HAS MANY FACES

Whether your architectural vision tends toward aluminum, brass, zinc or stainless steel – the appropriate surface design lends every building its individual character. On the following pages, we will show you a few examples of all the things possible in our production. Let yourself be inspired and get personal advice from our experts.

SUSTAINABILITY

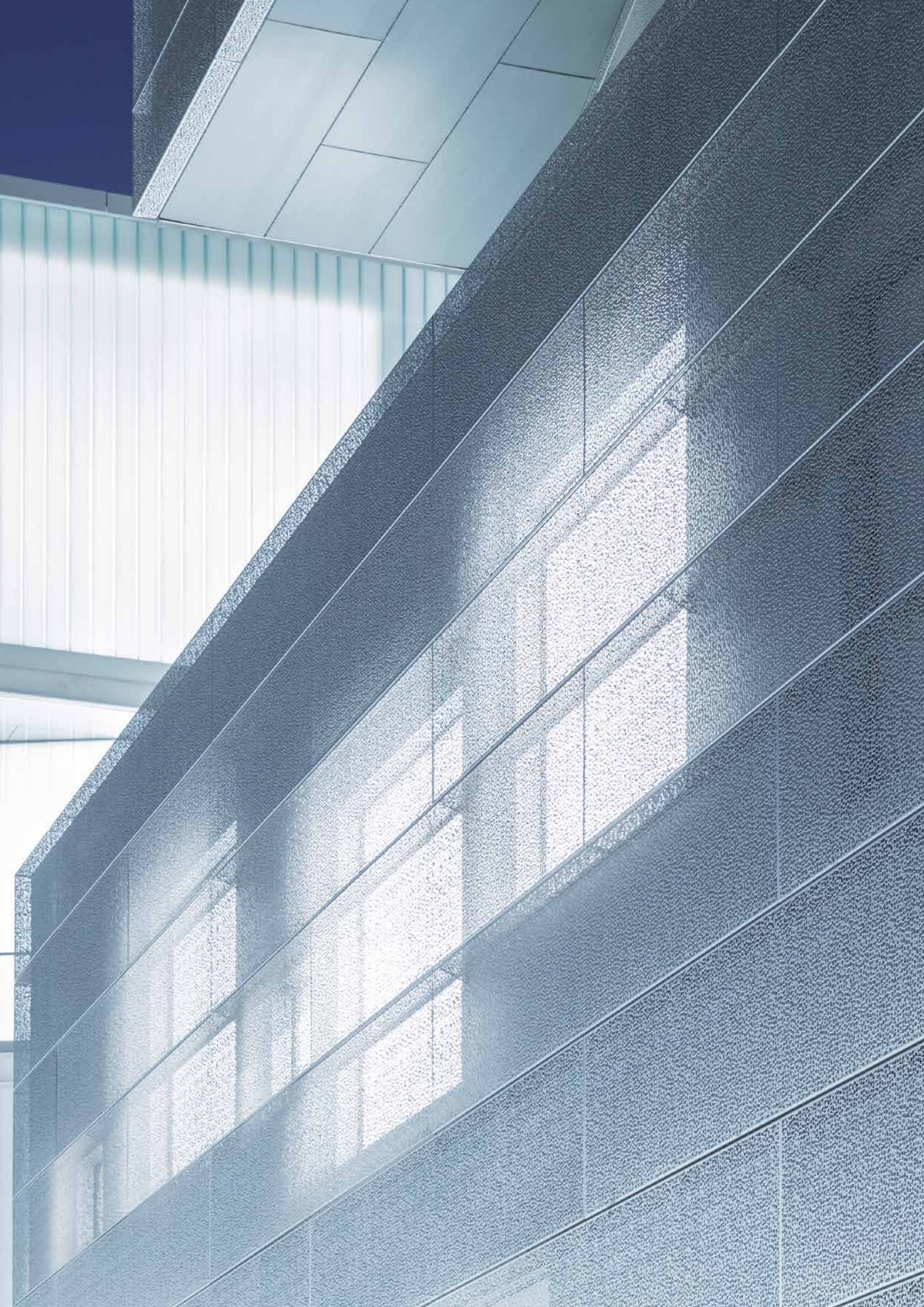


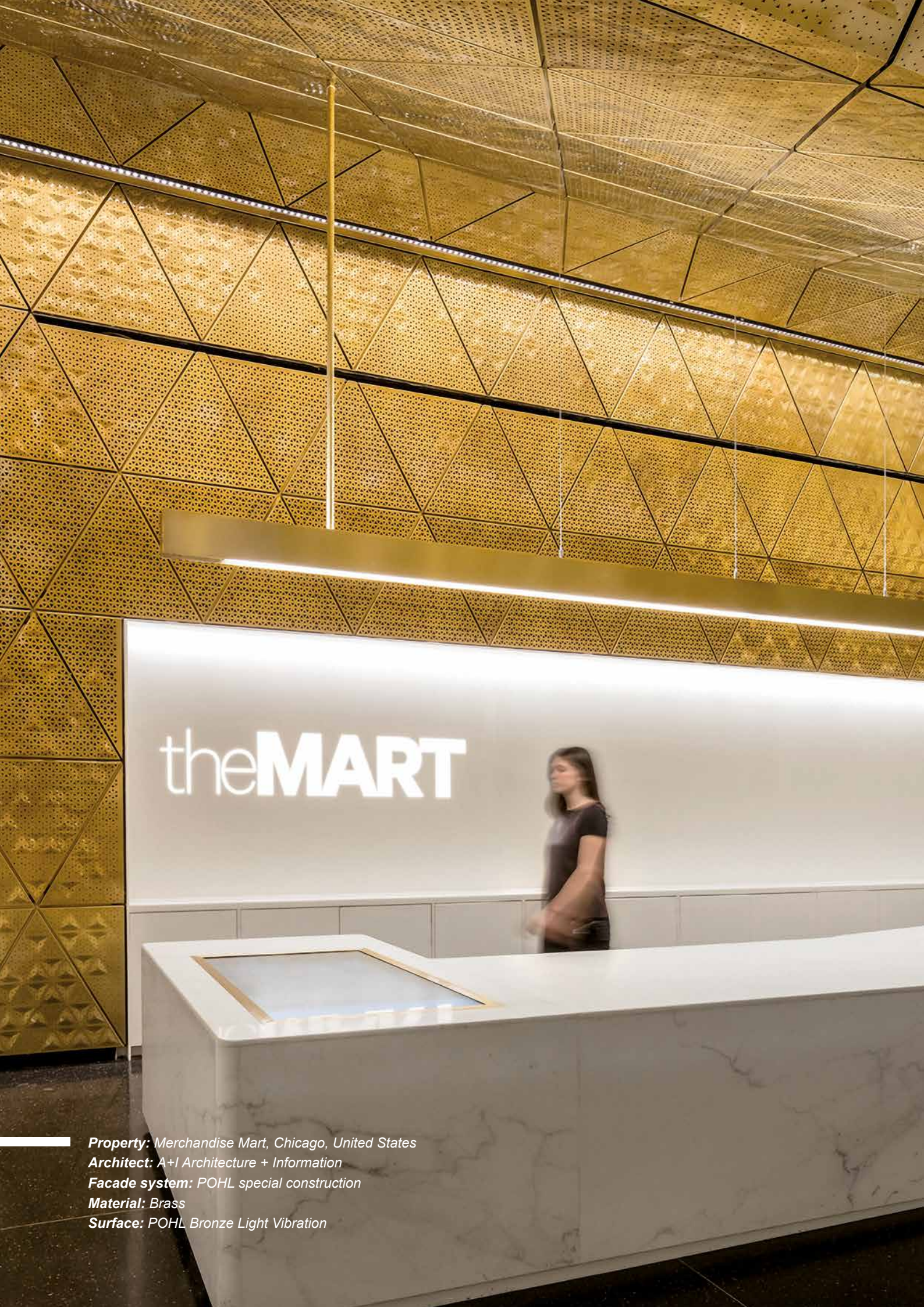
Brass, aluminum or stainless steel – metal alloys are excellent to recycle. This is why POHL also incorporates in its production raw materials from recycling. If you decide on a surface design without coating or varnish, 100 percent of the metal sheets can be brought back into the raw materials cycle.

All the following images are for illustrative purposes only, printing deviations of the colors/surfaces are possible and do not constitute a background for complaints. Only agreed reference samples are binding.

Property: Visual Arts Building, Iowa City, Iowa, United States
Architect: Steven Holl Architects
Facade system: POHL special construction
Material: Stainless steel and zinc







Property: Merchandise Mart, Chicago, United States

Architect: A+I Architecture + Information

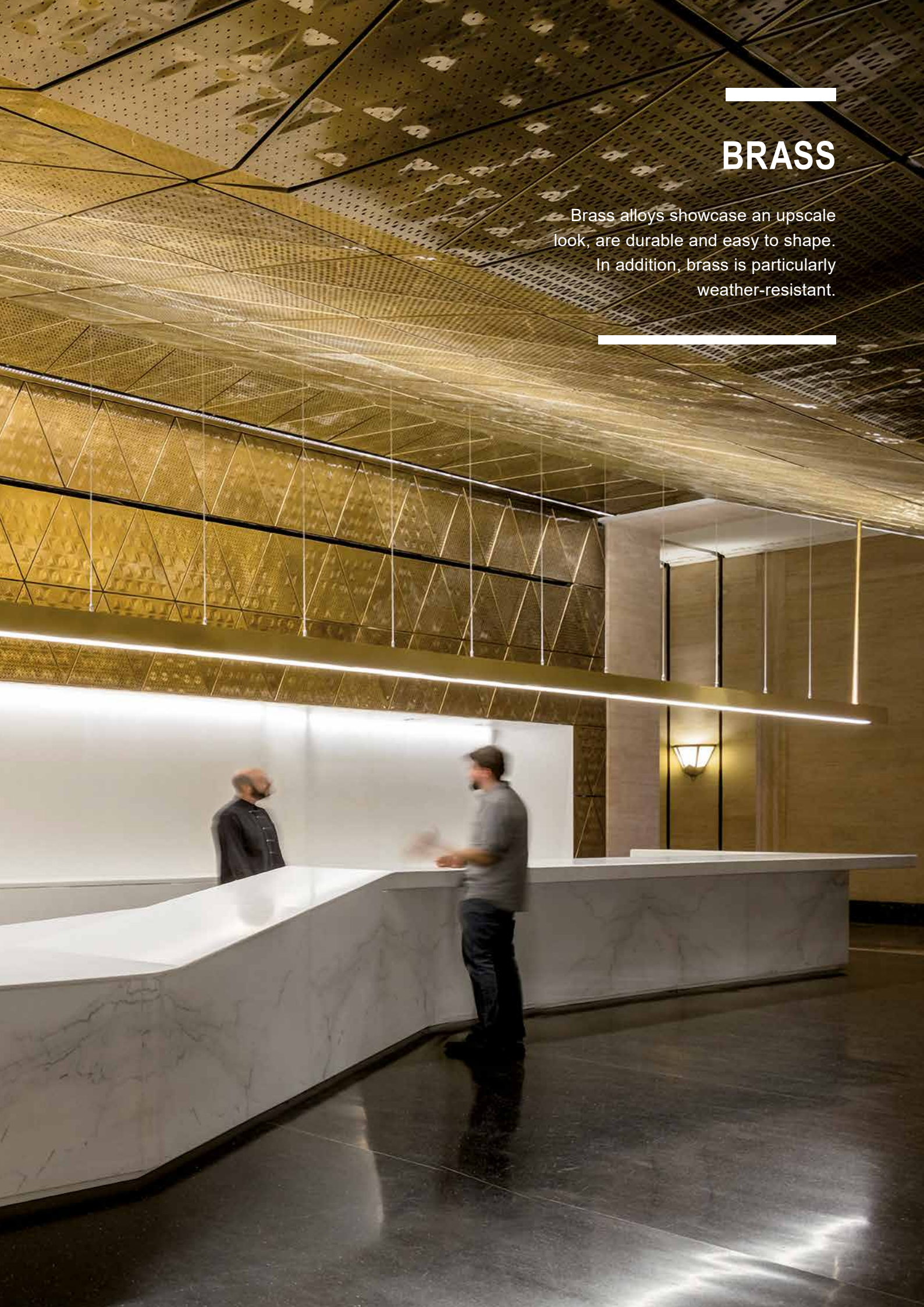
Facade system: POHL special construction

Material: Brass

Surface: POHL Bronze Light Vibration

BRASS

Brass alloys showcase an upscale look, are durable and easy to shape. In addition, brass is particularly weather-resistant.





POHL BRONZE

The color spectrum of POHL Bronze* ranges from reddish to gold to brownish shades. The selection of the alloy, polish, patination and finish has a fundamental impact on the final appearance of a surface and adds to the wide range of options possible in a collaboration with POHL.

With a special patination, the natural weathering process of the brass oxidation is recreated. If a layer of wax is applied for protection, the material is allowed to age naturally, whereas the application of varnish seals the look and feel of the surface.

MATERIAL THICKNESS	1 mm to 4 mm
SEALING	Wax Varnish
PANEL SIZE	1220 mm x 6000 mm Other sizes on request



* Copper or copper alloys are characterized by natural or nature-identical surfaces that continue to develop and respond to atmospheric influences. We expressly declare that we do not guarantee a consistent and unchanging surface on account of the manufacturing process.

POHL BRONZE ETCHED

Diffuse or precise, extensive or accentuated. With POHL Bronze Etched, it is possible to lend a surface even more depth and texture. Through our special etching process, a wide range of design possibilities opens up.

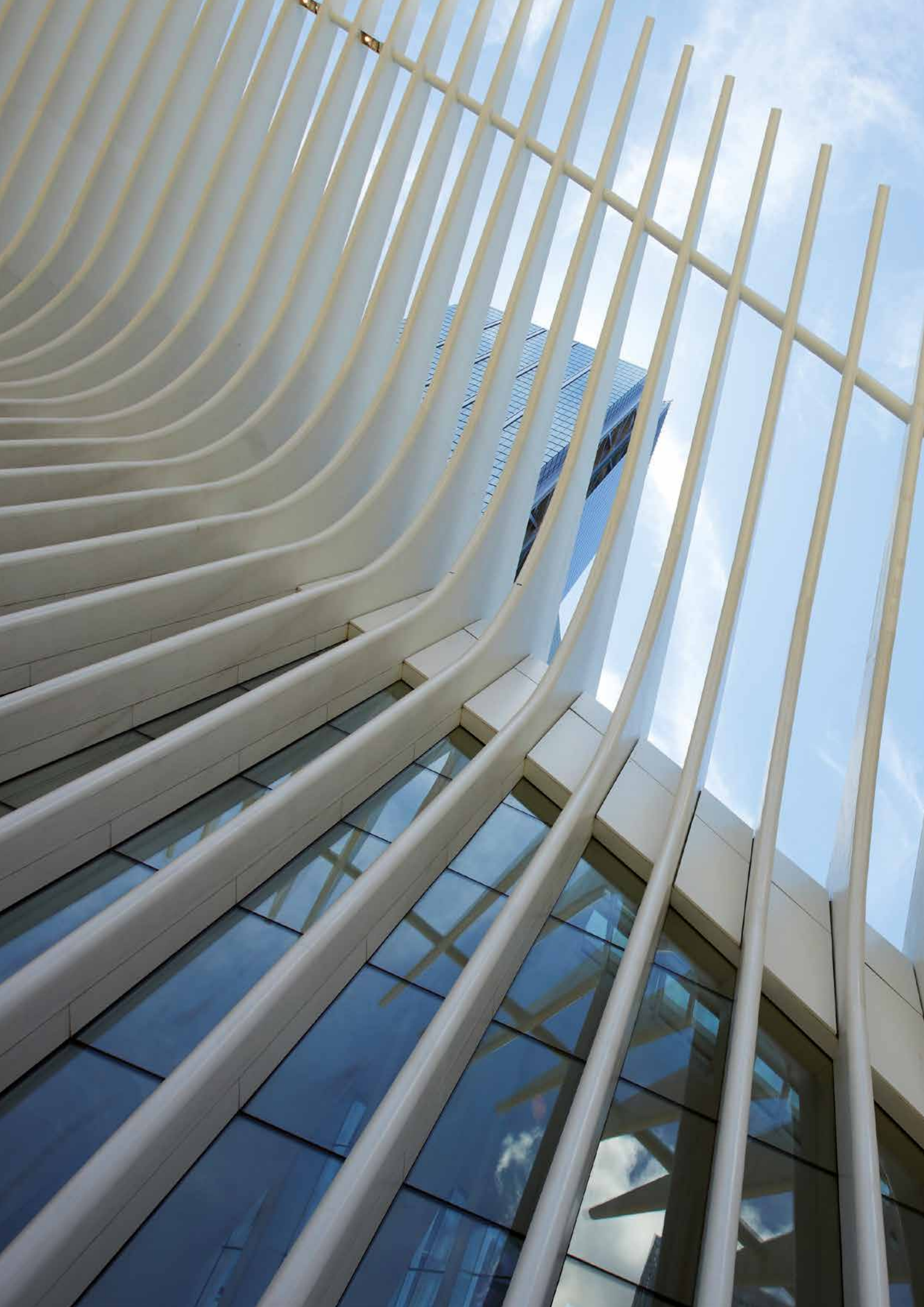
MATERIAL THICKNESS	1 mm to 4 mm
---------------------------	--------------

SEALING	Wax Varnish
----------------	---------------

ETCHING	Individual designs
----------------	--------------------

PANEL SIZE	1220 mm x 4000 mm Other sizes on request
-------------------	---







ALUMINUM

Aluminum is a corrosion-resistant lightweight metal. It can be flexibly shaped, is easy to clean and resistant to temperature fluctuations.

Property: Transportation Hub, New York, United States

Architect: Santiago Calatrava Architects & Engineers

Facade system: POHL special construction

Material: Aluminum



POHL DURANIZE®

With POHL Duranize®*, the top layer of the aluminum is anodized and forms an extremely hard, scratch-resistant and durable surface that requires little maintenance. POHL Duranize® is available in all standard anodized colors. In addition, we have developed special anodized finishes for you.

MATERIAL THICKNESS	Up to 4 mm (more on request)
PANEL SIZE	1500 mm x 4000 mm with polish 2000 mm x 6000 mm without polish Other sizes on request



* Anodized surfaces are subject to natural variations of color.
Sales and project samples may differ in color due to different material batches.

Property: Kubus Aalen, Aalen, Germany
Architect: merz objektbau GmbH & Co. KG
Facade system: POHL Europanel® EM
Material: Aluminum
Surface: POHL Duranize® Copper





POHL COTTO

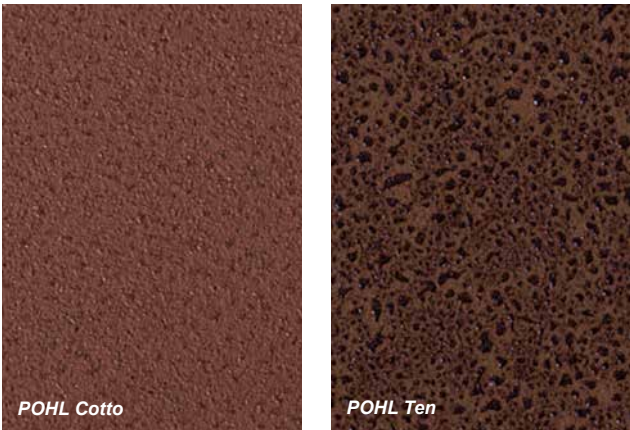
The natural earth tones of POHL Cotto* are reminiscent of the hues of terracotta. The pre-anodized aluminum is given a special coating with dual crust formation in an elaborate manual process.

POHL TEN

To combine the weathered look of corten steel with the light-weight qualities of aluminum, we have developed POHL Ten*. The pre-anodized basic material gets a coating with double crust formation in corten shades. The surface is produced in a 100 percent manual process, varied in a light or dark version.

MATERIAL THICKNESS	Up to 6 mm (more on request)
PANEL SIZE	2000 mm x 6000 mm Other sizes on request

Our portfolio for the finishing of aluminum is rounded out by a wide range of powder coatings (RAL colors) and di-color coatings (2-layer procedure).



* The color of a coating depends on how the paint is applied and on the paint batch that was produced for the respective order. Slight color variations may occur from batch to batch as well as in terms of the circumstances of the application.



Property: School of Art & Art History, Iowa City, United States

Architect: Steven Holl Architects

Facade system: POHL special construction

Material: Corten steel

Surface: POHL Phoenix

Property: Heron Tower, London, UK
Architect: Kohn Pederson Fox Associates
Facade system: POHL special construction
Material: Stainless steel



STAINLESS STEEL

Stainless steel is a corrosion resistant and high quality metal. It can be individually formed and defies any weather conditions.

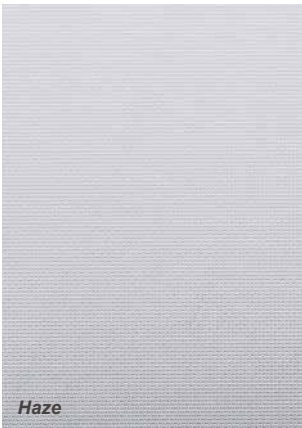




STAINLESS STEEL EMBOSSING

Stainless steel sheets with a delicate or elaborate embossing lend the facade a definite structured and clear look.

MATERIAL THICKNESS	Up to 2 mm (more on request)
PANEL SIZE	1500 mm x 6000 mm Other sizes on request



STAINLESS STEEL ETCHED

Diffused or precise, extensive or accentuated. With etched stainless steel, it is possible to lend a surface even more three-dimensional structure. By means of a special etching process, a wide range of design possibilities opens up.

MATERIAL THICKNESS	1 mm to 4 mm
SEALING	Wax Varnish
ETCHING	Individual designs
PANEL SIZE	1220 mm x 4000 mm Other sizes on request





POHL CHARCOAL MATT

A matt black finish in a charcoal look is the result of POHL Charcoal Matt. Through an elaborate finishing process, the coloring remains within the passive layer of the steel. This makes the surface extremely durable and protected from weather influences.

MATERIAL THICKNESS	Up to 3 mm (more on request)
PANEL SIZE	2000 mm x 6000 mm Other sizes on request





Property: Royal Academy of Arts / Benjamin
West Lecture Theater, London, GB
Architect: David Chipperfield Architects
Material: Stainless steel
Surface: POHL Charcoal Matt



CORTEN STEEL

Under the influence of weather, corten steel builds up a firmly adherent barrier layer that protects against corrosion. The actual rust layer gives corten steel its special appearance.

Property: Thomas More Square, London, UK
Architects: BDP Architects (London)
Facade system: POHL special construction
Material: Corten steel
Surface: POHL Phoenix



POHL PHOENIX

With POHL Phoenix, a rust patina is formed on the surface of the corten steel sheets under the influence of weather. The surface stands out with a high resistance to weathering and is manufactured without coatings or further chemicals.

MATERIAL THICKNESS	Up to 6 mm
SURFACE	Nature or pre-weathered
PANEL SIZE	1500 mm x 6000 mm Other sizes on request



GRIND CUTS

In addition to a wide variety of grains, we offer you individual polishes that heighten the desired surface effect.

In principle, any polish is possible with any material. Our experts will advise you what polish fits what surface and how we can meet your expectations.



Objekt: One World Trade Center, New York, United States

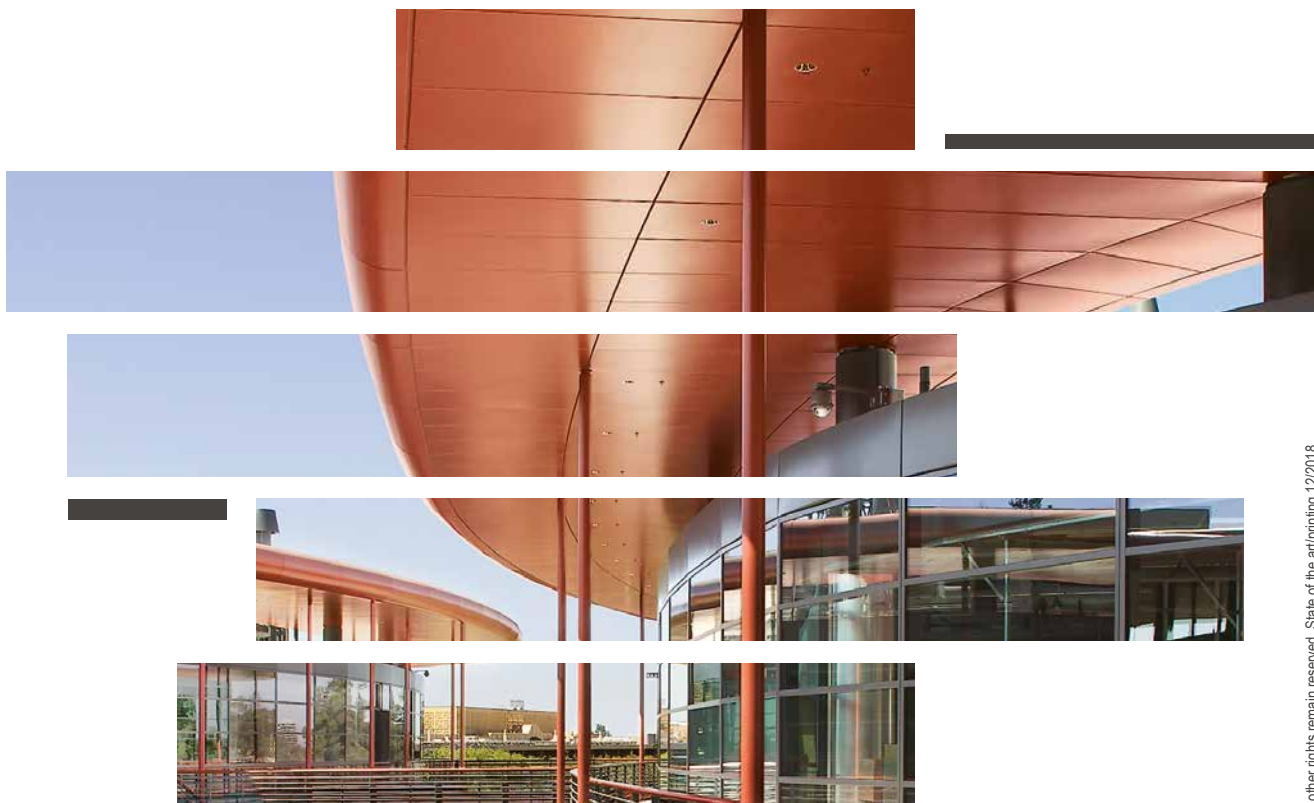
Architect: Skidmore, Owings & Merrill LLP

Facade system: POHL Europanel®

Material: Stainless steel

Surface: "Laser" stainless steel embossing





A company of the **POHL** Group

**HEADQUARTER
POHL FACADE DIVISION
CHRISTIAN POHL GMBH**

Robert-Bosch-Str. 6
50769 Cologne
Germany

Phone: +49 221 70911-0

Fax: +49 221 70891-23

info@pohl-facades.com

www.pohl-facades.com