

GEN2®

Designed
for a world
in motion

OTIS

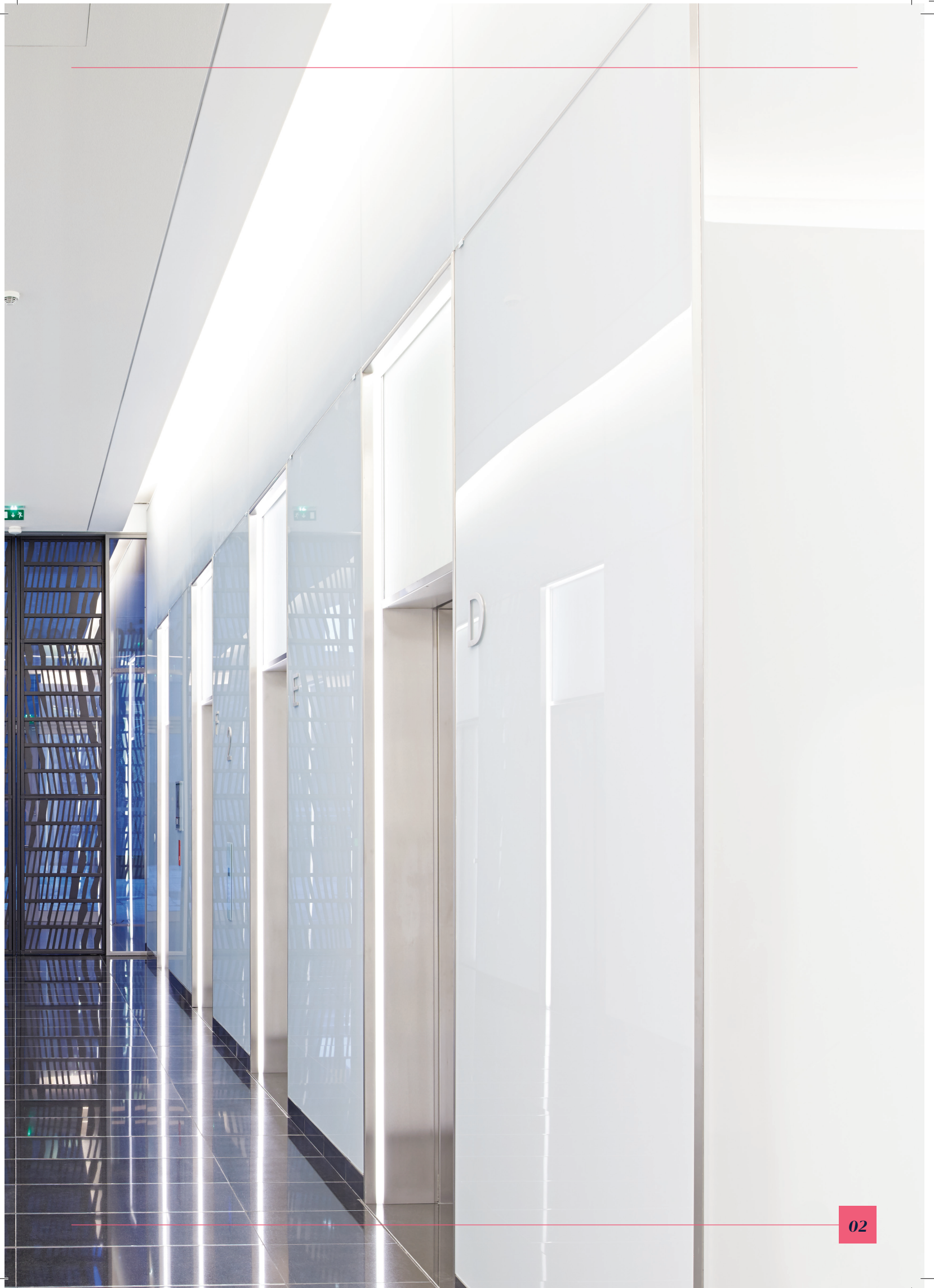


Set your building apart

Whether helping busy commuters get to work or delighting people as they shop, your building should be a unique experience for anyone who steps inside. The Gen2 elevator system has the style, comfort and speed needed to ensure passengers experience your building to the fullest. With space-saving architectural features that maximize design freedom, Otis helps your building stand out.

OTIS GEN2 OVERVIEW

Description	Machine room-less	Machine room
Speed	1.0 – 3.5 m/s	1.0 – 2.5 m/s
Capacity	800 – 1600 kg	800 – 1600 kg
Maximum stops	50	36
Maximum rise	150 m	125 m



Design without limits

Gen2 technology is sized to fit inside the wall of the top elevator landing – eliminating the need for a control room. So whether you want to impress visitors with an expansive, seamless lobby or offer tenants a larger space, Gen2 gives you the room to bring your vision to life.



COMPACT DESIGN

Gen2 technology eliminates machine room space and cost for greater architectural design freedom.



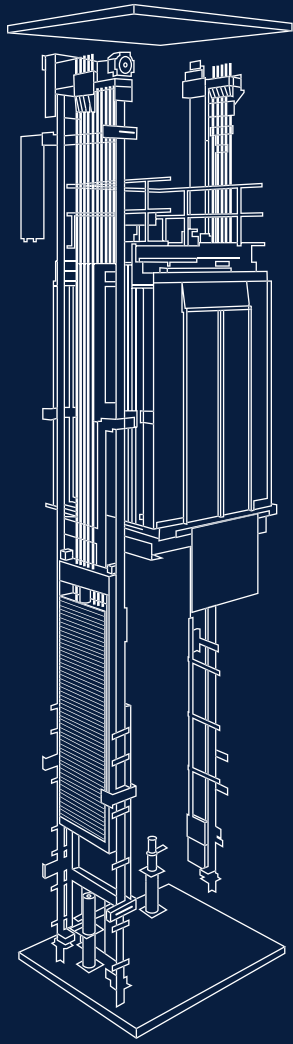
COMPACT CONTROLLER

Sized to fit inside the wall or in the door lintel of the top elevator landing, the controller can be accessed by an attractive, concealed test panel.



MAXIMIZED SPACE SAVINGS

Flexible coated steel belts allow a smaller machine sheave, reducing machine size by 80% and raising efficiency up to 50%.

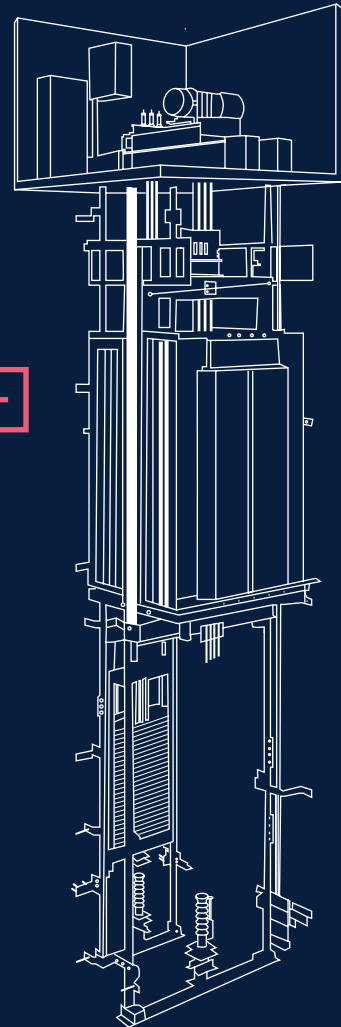


MACHINE ROOM-LESS CONFIGURATION

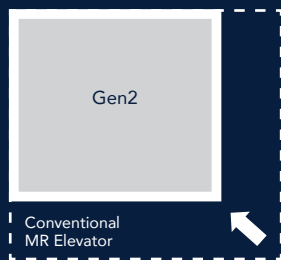
With the machine room-less configuration of the Gen2 elevator, all you need is a hoistway. The machine and controller are so compact, they fit inside the hoistway. No need for an extra room on top of your building for elevator components. You save on construction costs and clear rooftop space.

COMPACT MACHINE ROOM CONFIGURATION

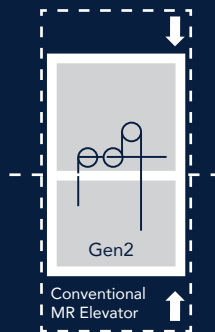
The compact machine configuration reduces the space requirements for the Gen2 elevator to no larger than the hoistway footprint, reducing construction costs and optimizing rooftop space.



HOISTWAY SPACE



MACHINE ROOM HEIGHT



Limitless design possibilities

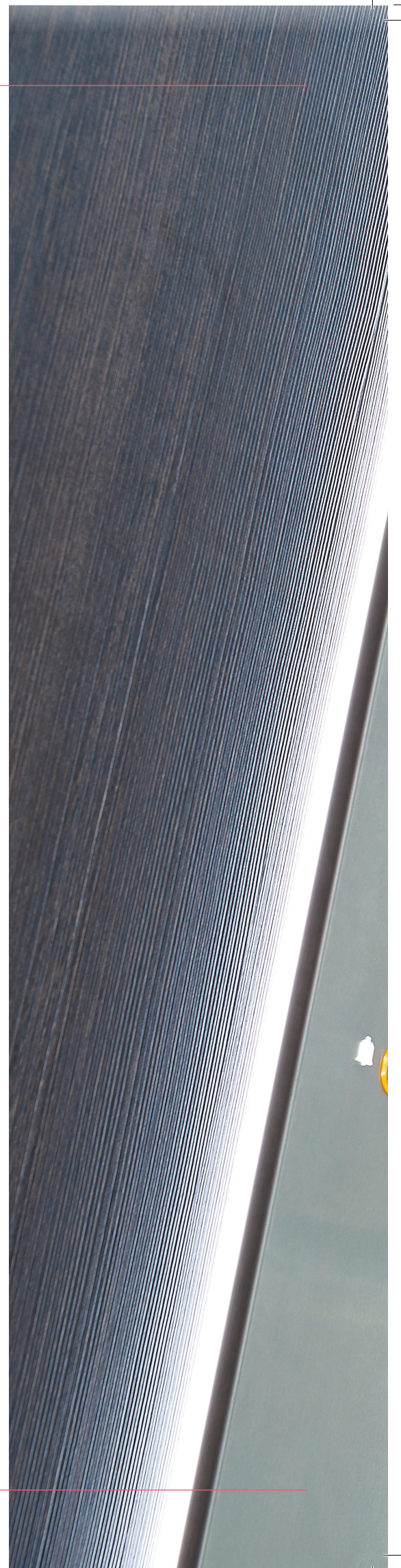
From modern to natural ambiances, Gen2 can be tailored to fit your architectural vision. Textures, classic materials and fittings offer virtually unlimited design flexibility for creating an inviting experience. Explore more than 400,000 options by visiting the online Otis cab configuration tool at cabcreate.otis.com.



NATURAL AMBIANCE

Wood, stone and leather materials create new-age designs inspired by architectural movements. This approach features smooth accents as seen in rounded corners, handrails and optional matching ceiling lights.

STANDARD	Imitation wood, stone and leather
ADVANCED	Wood and concretes laminates
PREMIUM	Solid wood for side panels and glossy colors for the rear panel



OTIS

630 kg 8 PERS
CE0341 781X6558 2016

GLARE-FREE LIGHTING

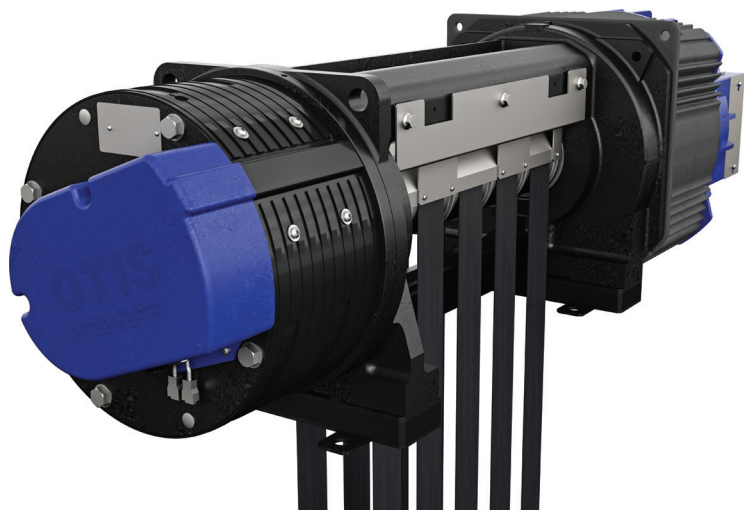
Indirect light from car corners and control panels creates a comfortable environment for passengers.



Your comfort is our focus

We sharpened our focus on speed and performance without compromising comfort. We reduced metal-on-metal contact and dampened vibrations to ensure the Gen2 ride is smooth and quiet.

- +** **SWIFT MOVEMENT**
High-performance door operators and superior car acceleration allow passengers to enter and exit elevators more quickly.
- +** **SMOOTH COATED STEEL BELTS**
The steel belts eliminate the noise created by the metal-on-metal contact from conventional steel ropes.
- +** **LOW-NOISE GEARLESS MACHINE**
Mounted on isolation rubber pads, the low-noise gearless machine reduces vibration and minimizes noise in adjacent rooms.





Reliable, as expected

Some of the world's most distinguished buildings trust in Gen2 technology. Manufactured exclusively at our ISO-certified factories, the Gen2 system is the result of our most advanced thinking, global experience and deep engineering expertise. All so you can be sure of getting exceptional Otis performance day after day.



PULSE

The Pulse System continuously monitors the elevator's coated steel belts to safeguard their integrity, ensuring safe, efficient operation and reduced inspection downtime.



AUTOMATIC RESCUE OPERATION

Battery-powered systems deliver passengers safely to the nearest floor during a power failure.



ENHANCED SEISMIC PROTECTION

Coated steel belts and a uniquely designed machine sheave work together to provide greater stability during seismic activity.



'MADE IN OTIS'

Every country in which we operate must meet or exceed the Otis standard. The Passport System requires each product to move through a series of meticulous inspections during its development. Once approved by a team of experts, the product moves on to its next stage. Otis champions UTC's overarching process of Achieving Competitive Excellence (ACE). Every factory, wherever its location, has an entire workforce committed to this high standard of manufacturing.

Create a lasting experience

Whatever your sustainability goals – from designing net-zero buildings to managing your energy efficiency – Gen2 is engineered to meet your needs.



+ **REGEN™ DRIVE**

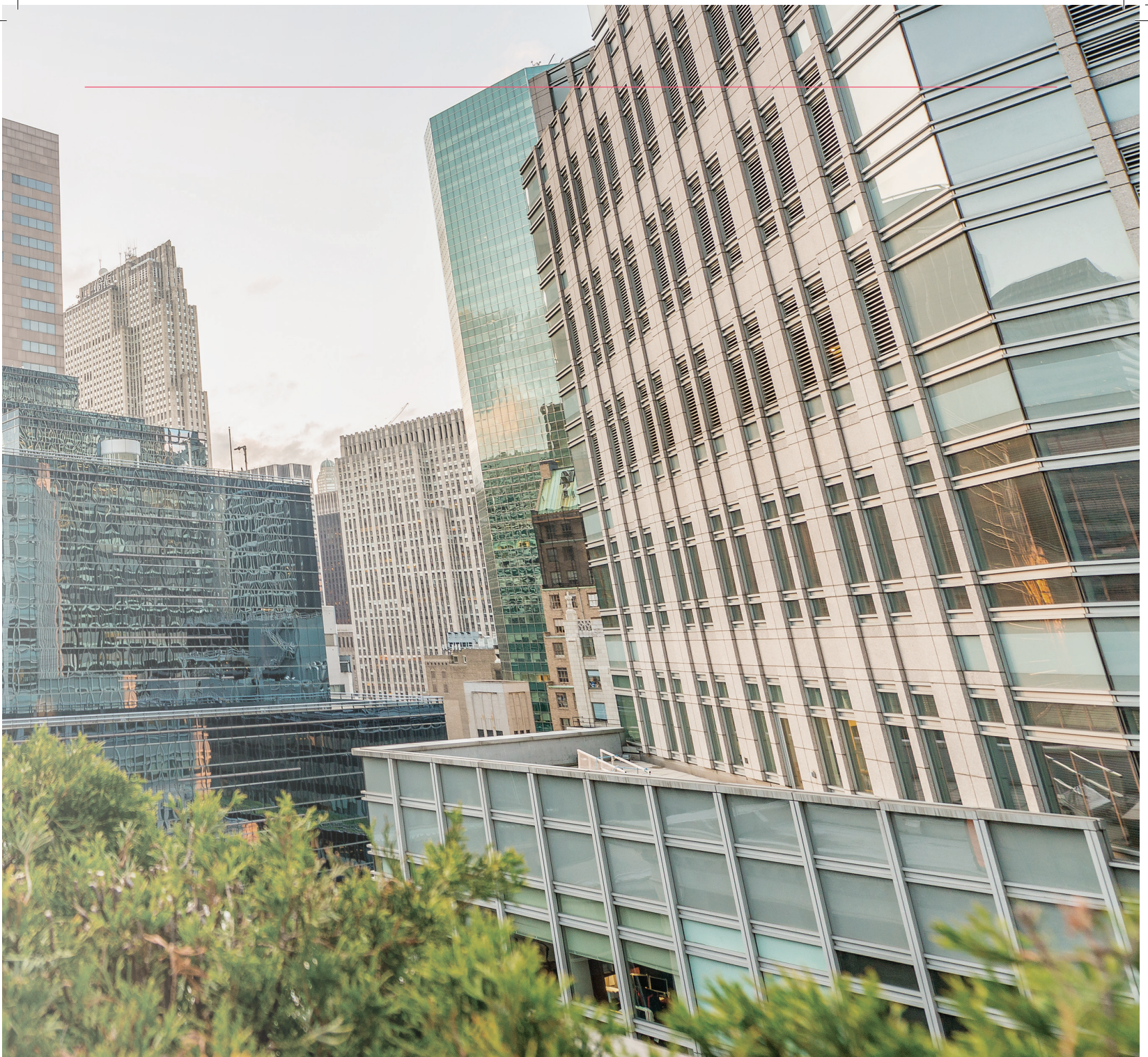
75%

more efficient than conventional geared systems with non-regenerative drives, while providing clean power to help run other building systems.

+ **LED LIGHTING**

10x

longer lifespan of Gen2 LED lighting compared to conventional fluorescent lamps.



LUBRICATION

ZERO

coated steel belt and machine lubrication needed, providing for a cleaner hoistway and elevator environment.



SLEEP MODE

75%

more efficient LED energy usage with sleep mode – lights and fans shut down when not in use and are automatically restarted with the touch of a button.

We're with you from concept to completion

Creating a unique experience for tenants and customers takes a lot of thought, planning and coordination. Thankfully, you don't have to do it alone. For over 160 years, we've helped customers all around the world reach new heights while helping billions of passengers arrive at their destinations every day. So from detailed project planning to ongoing service, we're here to help you every step of the way.



PROJECT DESIGN

We consider architectural solutions, traffic analysis, product specifications and value engineering to help craft and deliver on your vision.



SPECIALIZED INSTALLATION PLANNING

Our team helps at every step of the installation process, from coordinating contractors to monitoring specialized safety reviews to delivering a smooth handover when the project is complete.



A commitment to exceptional service

We know what it takes to keep people moving safely and smoothly. Our founders were dedicated to delivering extraordinary service, and today we're continuing that promise with personalized and imaginative ways to meet our customers' every need.

Benefit from the industry's leading service offering, featuring 24/7 dedicated customer support through OTISLINE[®], more intuitive access to information with the eService customer portal and our personal commitment to always put your needs first.



**Signature
Service**



WE EARN YOUR TRUST — EVERY DAY

Our mechanics see your building as their own. With a global team of more than 30,000, we work around the clock to keep your equipment operating like new. The result is truly personalized service that ensures we build your trust over the lifetime of your equipment.

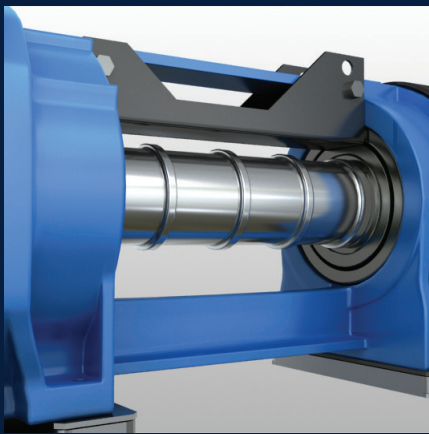


TURNING DATA INTO ACTION

As one of the first elevator companies to use big data and predictive analytics to improve performance, we're experts at getting the most out of emerging technology. Our digital ecosystem uses the "internet of things" and mobility tools to predict and diagnose issues before they occur. All this to stay ahead of your needs and to deliver a personalized passenger experience.

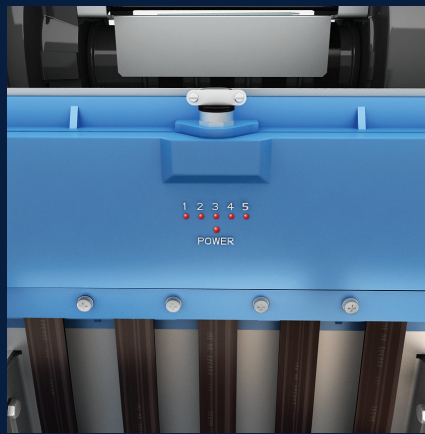
Standard equipment

TRACTION



- Gearless machine with synchronous permanent magnet motor
- Radial low inertia design
- 240 starts/hour in peak abilities

MONITORING



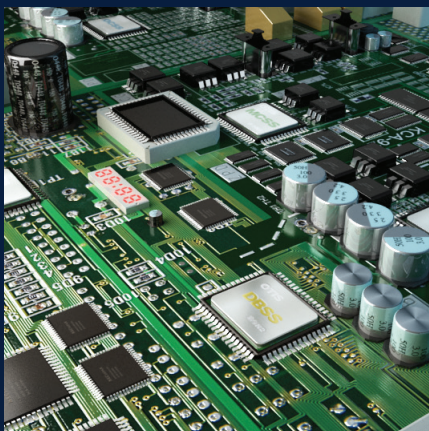
- Automated rescue operation
- Pulse 24/7 belt integrity monitoring system
- Two-way communication and remote intervention system with cellular 3G option

ROPING



- 2:1 overslung configuration
- All moving elements integrated in the top of the high-resistance steel frame in charge of absorbing mechanical constraints

CONTROL & POWER



- Modular microprocessor system
- Closed loop, variable frequency and voltage
- Regenerative drive with +/- 3 mm stopping accuracy
- Standby mode
- LED lightning in car and for hall fixtures

SUSPENSION



- Stainless steel polyurethane-coated belts instead of conventional ropes
- Lubrication free
- Life duration twice as long as conventional ropes

DOORS



- Variable speed high-traffic door operator 240 starts/hours in peak
- EN81-58 fire resistant
- Reinforced self-cleaning slotted sill and aluminum door track with protected roller system
- Car door lock compatible

Main options

PANORAMIC



- Full glass car
- Full glass hoistways
- Compatible with outside installation for infrastructure projects

DOORS



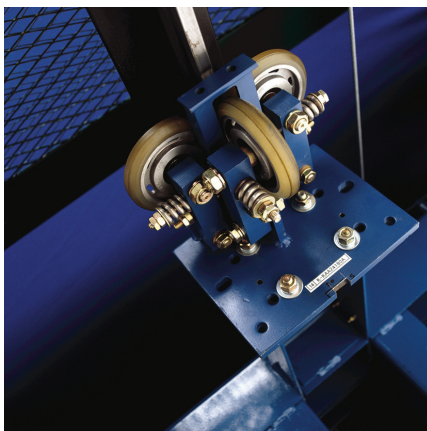
- Landing or hoistway installation
- Full frame, small frame or no frame options
- Glass or full glass

HALL FIXTURES



- Flat or flush mounting
- In-car lintel or wall mounting
- Brushed, mirror or gold stainless steel finishes

PREMIUM RIDE QUALITY



- High-speed friction rollers with compensating bumpers
- A class rails
- Reinforced rails attachments
- Down to 50 dB(A) noise and 10 milli-g vibrations in car

CAB AESTHETICS



- Ambiance aesthetics – thousands of combinations available in natural and modern styles
- Modular aesthetics – a large range of preset styles to suit your building

FULL CUSTOMIZATION

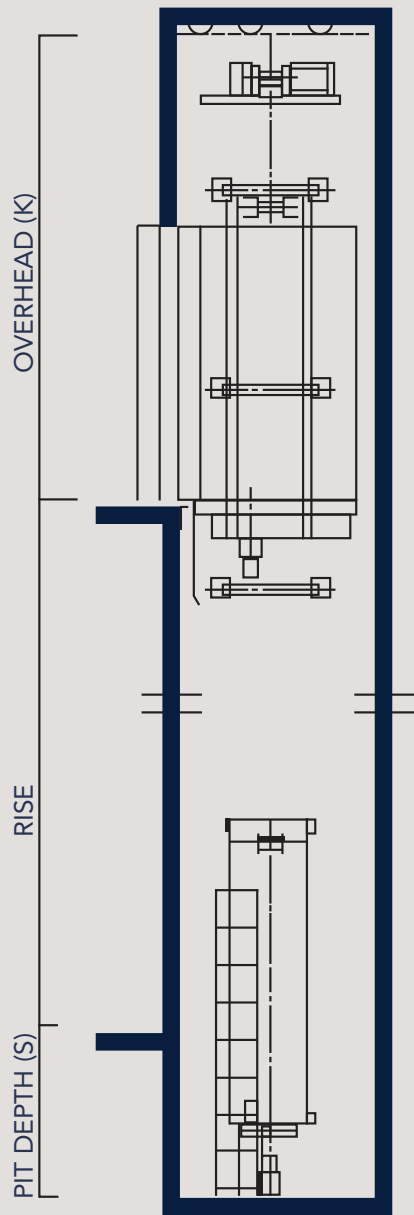


- Variable dimensions
- Special car lining and doors
- High-constraint environment
- Our team stays at your disposal to make your project possible

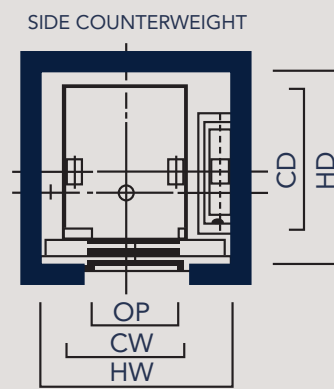
Gen2 Machine room-less specifications (1 - 2.5 m/s)

Duty load (kg)	Speed (m/s)	K Minimum (mm) EN81-1	S Minimum (mm) EN81-1	Maximum number of stops	Maximum rise (m)	Cars in a group
800<=DL<=1000	1	3797	1229	20	50	Up to 8
	1.5	3955	1331	31	80	
	1.6	3955	1331	35	90	
	1.75	4017	1375	37	96	
	2	4128	1671	47	120	
	2.5	4363	1827	47	120	
1150<=DL<=1600	1	3815	1249	20	50	
	1.5	3973	1351	31	80	
	1.6	3973	1351	35	90	
	1.75	4035	1395	37	96	
1150<=DL<=1275	2	4177	1691	43	110	
	2.5	4412	1847	45	115	
1350<=DL<=1600	2	4177	1691	47	120	
	2.5	4412	1847	47	120	

Duty load (kg)	Speed (m/s)	Car dimension (mm)		(OP) x (OPH) (mm)	(HW) x (HD) (mm)	Door system
		(CW) x (CD)	Height			
800	1.0<=V<=1.75	1350 x 1400	2300	800 x 2100	2000 x 1750	Center opening (2-Panel)
	2.0<=V<=2.5					
1000	1.0<=V<=1.75	1600 x 1400		900 x 2100	2230 x 1750	Center opening (2-Panel)
	2.0<=V<=2.5					
1000	1.0<=V<=1.75	1100 x 2100		900 x 2100	1950 x 2450	Telescopic (2-Panel)
	2.0<=V<=2.5					
1150	1.0<=V<=1.75	1800 x 1450		1000 x 2100	2500 x 1800	Center opening (2-Panel)
	2.0<=V<=2.5					
1150	1.0<=V<=1.75	1200 x 2100		1000 x 2100	1950 x 2450	Telescopic (2-Panel)
	2.0<=V<=2.5					
1275	1.0<=V<=1.75	1950 x 1450		1100 x 2100	2660 x 1800	Center opening (2-Panel)
	2.0<=V<=2.5					
1275	1.0<=V<=1.75	1200 x 2300		1100 x 2100	2050 x 2750	Telescopic (2-Panel)
	2.0<=V<=2.5					
1350	1.0<=V<=1.75	2000 x 1500		1100 x 2100	2710 x 1850	Center opening (2-Panel)
	2.0<=V<=2.5					
1350	1.0<=V<=1.75	1300 x 2300		1100 x 2100	2150 x 2750	Telescopic (2-Panel)
	2.0<=V<=2.5					
1600	1.0<=V<=2.5	2000 x 1700	1100 x 2100	2710 x 2050	Center opening (2-Panel)	
	2.0<=V<=2.5					
1600	1.0<=V<=2.5	1400 x 2400	1300 x 2100	2250 x 2850	Telescopic (2-Panel)	
	2.0<=V<=2.5					



ELEVATION



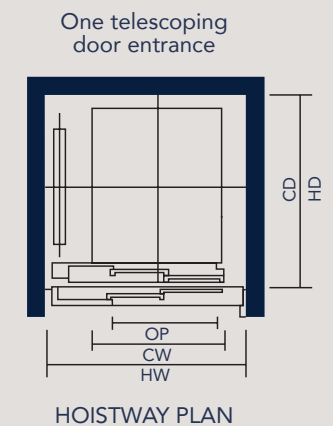
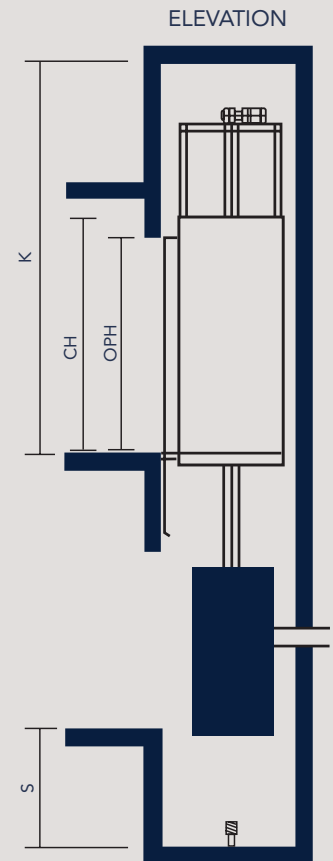
HOISTWAY PLAN

Gen2 Machine room-less specifications (3 - 3.5 m/s)

Duty load	900		1000				1275				1600							
Passenger capacity	12		13				17				21							
Size	Wide	Deep	Wide	Deep	Wide	Deep	Wide	Deep	Wide	Deep	Wide	Deep	Wide					
Number of entrances	1																	
Speed (m/s)	3																	
Counterweight safeties	Without	With	Without	With	Without	With	Without	With	Without	With	Without	With	Without	With	Without	With		
Hoistway dimension (mm)	Width (HW)		2180 (CLD900)	2300 (CLD900)	1930 (CLD800)	2050 (CLD800)	2300 (CLD900)	2430 (CLD900)	1900 (TLD1000)	2030 (TLD1000)	2700	2830	2310	2310	2700	2830	2800	2930
	Depth (HD)		2100 (TLD900)	2230 (TLD900)	2030 (CLD900)	2150 (CLD900)	2380 (CLD1000)	2500 (CLD1000)	2010 (TLD1100)	2030 (TLD1100)								
Car dimension (mm)	Width (CW)		1400	1100	1600	1200	2000	1400	2000	1400	2000	1700	1600					
	Depth (CD)		1800 (CLD)	2060 (CLD)	2400 (CLD)	2460 (CLD)	1750 (CLD)	2010 (CLD)	2690 (TLD)	1750	2010	2790	2790	2000	2260	1900	2110	
	Height (CH)		1890 (TLD)	2110 (TLD)	2490 (TLD)	2510 (TLD)												
Door dimension (mm)	Opening height (OPH)		2000 / 2100 / 2200 / 2300 / 2400	2100 / 2200 / 2300 / 2400	2000 / 2100 / 2200 / 2300 / 2400	2100 / 2200 / 2300 / 2400	2000 / 2100 / 2200 / 2300 / 2400	2100 / 2200 / 2300 / 2400	2000 / 2100 / 2200 / 2300 / 2400	2100 / 2200 / 2300 / 2400	2000 / 2100 / 2200 / 2300 / 2400	2100 / 2200 / 2300 / 2400	2000 / 2100 / 2200 / 2300 / 2400	2100 / 2200 / 2300 / 2400	2000 / 2100 / 2200 / 2300 / 2400	2100 / 2200 / 2300 / 2400	2000 / 2100 / 2200 / 2300 / 2400	
	Opening width (OP)	Telescopic (TLD)	900	900	800 / 900 / 1000	-	1000 / 1100	-	1300	-	-	-	-	-	-	-	-	
		Center 2 panels (CLD)	-	-	800 / 900	900 / 1000 / 1100	-	1100	-	1100	-	-	-	-	-	-	-	
Center 4 panels (CLD2)		-	-	-	-	-	-	-	-	-	-	-	-	-	-	-		
Top of car balustrade (mm)		1100																
Standard overhead (for CH = 2400) (mm)		5340	5340	5340	5340	5360	5360	5360	5360	5360	5360	5360	5360	5360	5360	5360		
Standard pit (mm)		2000	2410	2000	2410	2000	2410	2080	2450	2080	2450	2080	2450	2080	2450	2080	2450	
Maximum number of stops		50 / 32 (Flat COP)																
Maximum rise (m)		150																
Cars in group		Up to 8																
Standard power (V)		380 - 400 - 415 - 440 - 460																
Frequency (Hz)		50 - 60																

EN81-20 & 50 Compliant dimensions. Please contact your local sales representative depending on configurations for detailed specifications.

900		1000				1275				1600					
12		13				17				21					
Wide		Deep		Wide		Deep		Wide		Deep		Wide			
1															
3.5															
Without	With	Without	With	Without	With	Without	With	Without	With	Without	With	Without	With	Without	With
2210 (CLD900)	2300 (CLD900)	1960 (CLD800)	2050 (CLD800)	2330 (CLD900)	2430 (CLD900)	1930 (TLD1000)	2030 (TLD1000)	2730	2830	2310	2310	2730	2830	2830	2930
2130 (TLD900)	2230 (TLD900)	2060 (CLD900)	2150 (CLD900)	2410 (CLD1000)	2500 (CLD1000)	2010 (TLD1100)	2030 (TLD1100)								
		1830 (TLD900)	1930 (TLD900)	2510 (CLD1100)	2600 (CLD1100)										
		1860 (TLD1000)	1930 (TLD1000)												
1800 (CLD)	2060 (CLD)	2400 (CLD)	2460 (CLD)	1750 (CLD)	2010 (CLD)	2690 (TLD)		1750	2010	2790	2790	2000	2260	1900	2110
1890 (TLD)	2110 (TLD)	2490 (TLD)	2510 (TLD)												
1400		1100		1600		1200		2000		1400		2000		2100	
1500		2100		1400		2300		1400		2400		1700		1600	
2200 to 3200 (in 100 mm increments)															
2100 / 2200 / 2300 / 2400															
900	800 900 1000	-	-	1000 1100	-	1300	-	-	-	-	-	-	-	-	-
	800 900	900 1000 1100	-	-	1100	-	1100	1100	-	-	-	-	-	-	-
-	-	-	-	-	-	-	-	-	-	-	-	-	-	-	-
1100															
5400				5430											
2550	2700	2550	2780	2630											
50 / 32 (Flat COP)															
150															
Up to 8															
380 - 400 - 415 - 440 - 460															
50 - 60															



Gen2 Machine room specifications (1 - 2.5 m/s)

FOR BOTH REAR COUNTERWEIGHT AND SIDE COUNTERWEIGHT

Duty load (kg)	Speed (m/s)	Buffer type	Pit Depth S Minimum (mm)	Overhead K Minimum (mm)		Minimum number of stops	Maximum rise (m)	Cars in a group
				EN81-1	EN81-20			
630-1000	1	PU	1300	4100	4300	16	50	Up to 8
	1	OIL	1400	4200	4400	16	50	
	1.5/ 1.6	OIL	1450	4250	4450	36	75	
	1.75	OIL	1450	4300	4500	36	90	
800-1000	2	OIL	1500	4350	4550	36	105	
	2.5	OIL	1800	4550	4750	36	125	
1150-1600	1	PU	1300	4100	4300	16	50	
	1	OIL	1400	4200	4400	16	50	
	1.5/ 1.6	OIL	1450	4250	4450	36	75	
	1.75	OIL	1450	4300	4500	36	90	
	2	OIL	1500	4350	4550	36	105	
	2.5	OIL	1800	4550	4750	36	125	

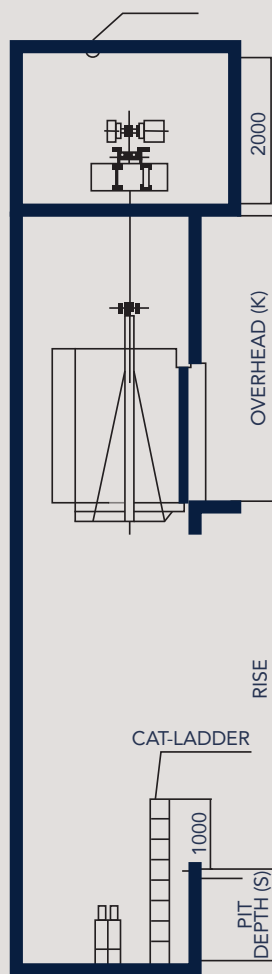
FOR SIDE COUNTERWEIGHT ONLY

Duty load (kg)	Car dimension (mm)			Door dimension (mm)		Hoistway dimension (mm)	
	(CW) x (CD)	(CW) x (CD) EN81-20	Height	Opening (OP)	Opening (OP) EN81-20	(HW) x (HD)	(HW) x (HD) EN81-20
630	1250 x 1250	-	2395	800	-	2000 x 1650	-
680	1300 x 1250	-	2395	800	-	2050 x 1650	-
800	1400 x 1350	1350 x 1450	2395	800	800	2150 x 1800	2100 x 1900
900	1600 x 1300	1450 x 1450	2395	900	800	2350 x 1800	2200 x 1900
1000	1600 x 1400	1600 x 1450	2395	900	900	2350 x 1900	2350 x 1900
1150	1600 x 1600	1600 x 1600	2395	1000	1000	2450 x 2000	2450 x 2000
1350	1600 x 1850	1600 x 1850	2395	1000	1000	2450 x 2250	2450 x 2250
1600	1700 x 2000	1700 x 2000	2395	1000	1000	2550 x 2400	2550 x 2400

FOR REAR COUNTERWEIGHT ONLY

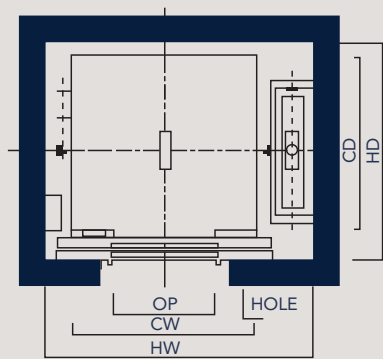
Duty load (kg)	Car dimension (mm)			Door dimension (mm)	Hoistway dimension (mm)	
	(CW) x (CD)	(CW) x (CD) EN81-20	Height	Opening (OP)	(HW) x (HD)	(HW) x (HD) EN81-20
630	1300 x 1100	1250 x 1250	2395	800	1800 x 1900	1800 x 1900
680	1400 x 1100	1350 x 1250	2395	800	1900 x 1750	1900 x 1900
800	1400 x 1300	1400 x 1350	2395	800	1900 x 2000	1900 x 2000
900	1600 x 1300	1600 x 1300	2395	900	2150 x 1950	2150 x 1950
1000	1600 x 1400	1600 x 1400	2395	900	2150 x 2050	2150 x 2050
1150	1900 x 1350	1600 x 1350	2395	1100	2450 x 2000	2450 x 2000
1350	1900 x 1550	1600 x 1550	2395	1100	2450 x 2200	2450 x 2000
1600	2000 x 1700	2000 x 1700	2395	1100	2450 x 2350	2450 x 2350

HOISTING HOOK
BY OTHERS
(2000 KG)



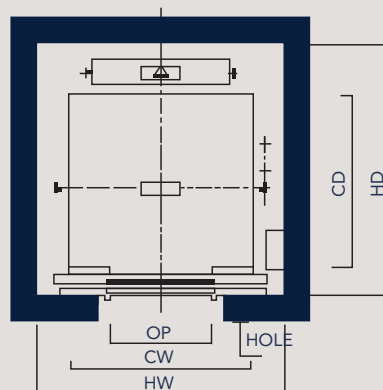
ELEVATION

SIDE COUNTERWEIGHT



HOISTWAY PLAN

REAR COUNTERWEIGHT



HOISTWAY PLAN

Solutions in motion

Our Gen2 elevators blend convenience, style and performance to deliver a new passenger experience that adds value to any residential, commercial, hospitality, medical or industrial building.

OUR FAMILY OF ELEVATORS AND ESCALATORS



ARISE ELEVATORS

Our Arise elevators focus on delivering an efficient and high-quality solution for your customers, tenants or passengers that changes how they experience your building.



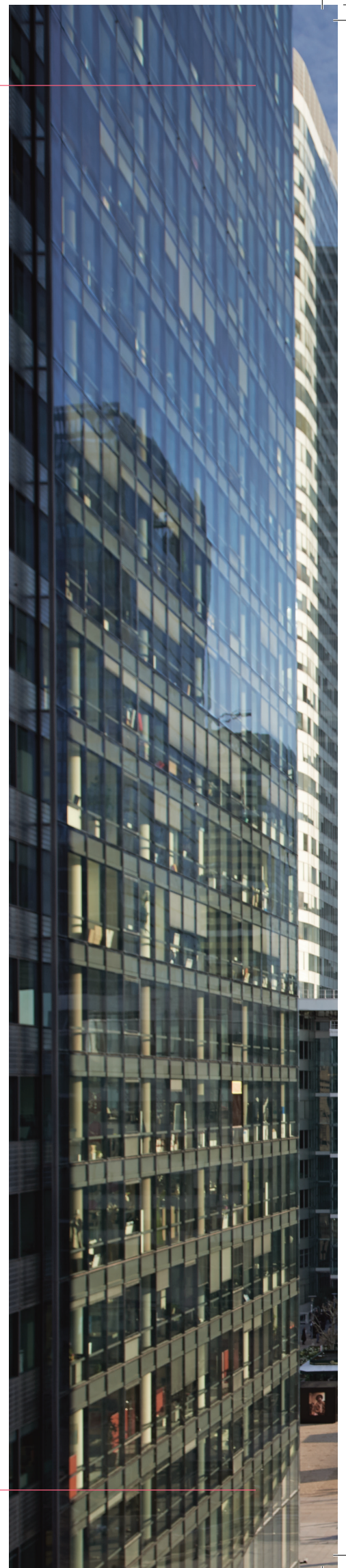
LINK™ ESCALATORS & MOVING WALKS

Ultimately safe, incredibly reliable and designed to integrate seamlessly with your building, our escalators and moving walks are engineered to be whisper quiet and smooth.



SKYRISE® ELEVATORS

Otis teams on site coordinate with contractors and builders, monitor specialized safety reviews and efficient installation as well as smooth handover when the project is complete.





OUR BEST-SELLING ELEVATOR

Some of the world's most iconic buildings are home to Gen2.

To learn more about our comprehensive family of products and services, visit www.otis.com.

— Otis Elevator Company is the world's leading manufacturer and maintainer of people-moving products including elevators, escalators and moving walkways. With headquarters in Farmington, Connecticut, Otis employs 68,000 people globally. Founded 165 years ago by the inventor of the safety elevator, Otis offers products and services in approximately 200 countries and territories and maintains two million elevators and escalators worldwide. Otis is a unit of United Technologies Corp., a diversified company providing high technology products and services to the building and aerospace industries. For more information, visit www.otis.com or follow Otis on LinkedIn, YouTube and as @OtisElevatorCo on Twitter, Facebook and Instagram.

otis.com

CHN-EN-0718

© 2018 Otis Elevator. A United Technologies Company.

OTIS