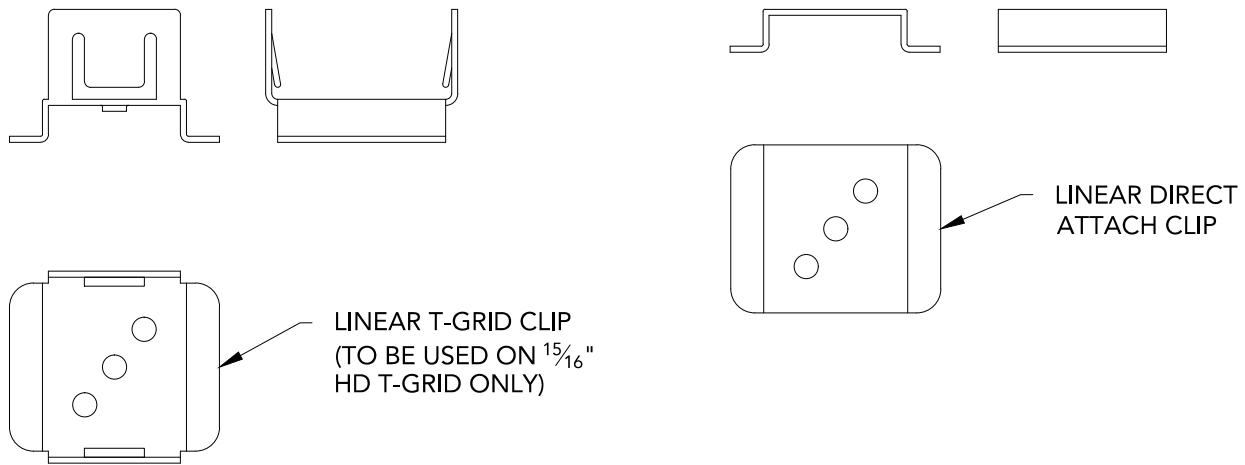


1 TYPICAL LINEAR SECTION DETAIL
6" = 1'-0"

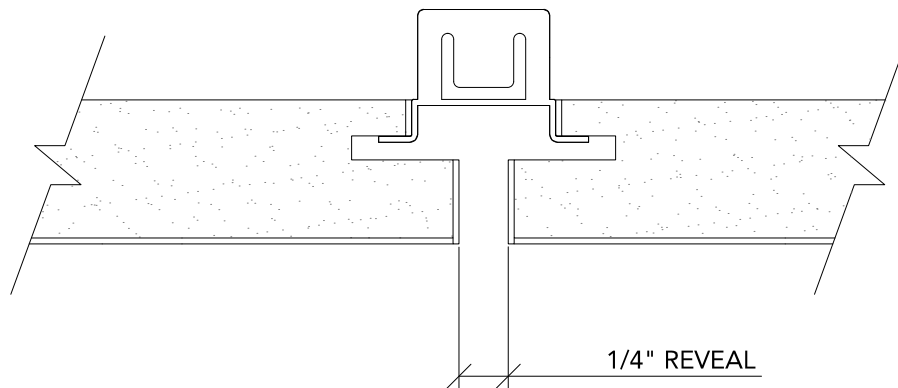
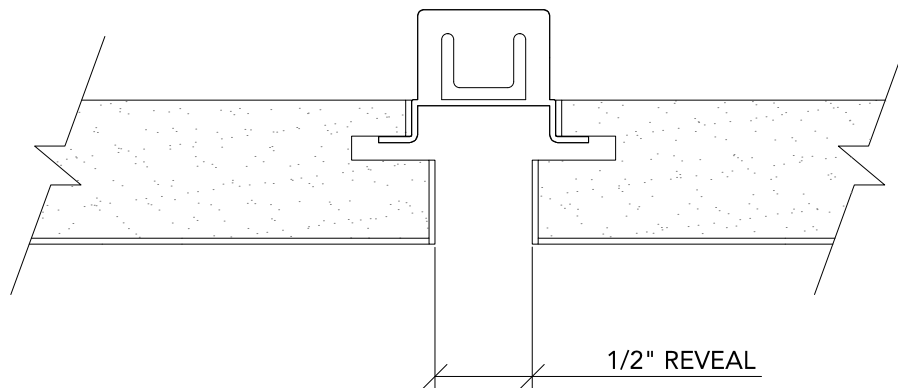
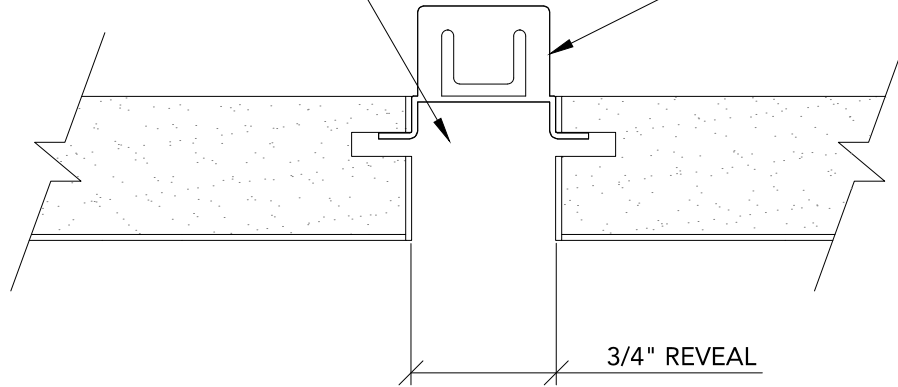


2 LINEAR T-GRID CLIP
1' = 1'-0"

3 LINEAR DIRECT ATTACH CLIP
1' = 1'-0"

BLACK FELT FILLER STRIP (TYP.)

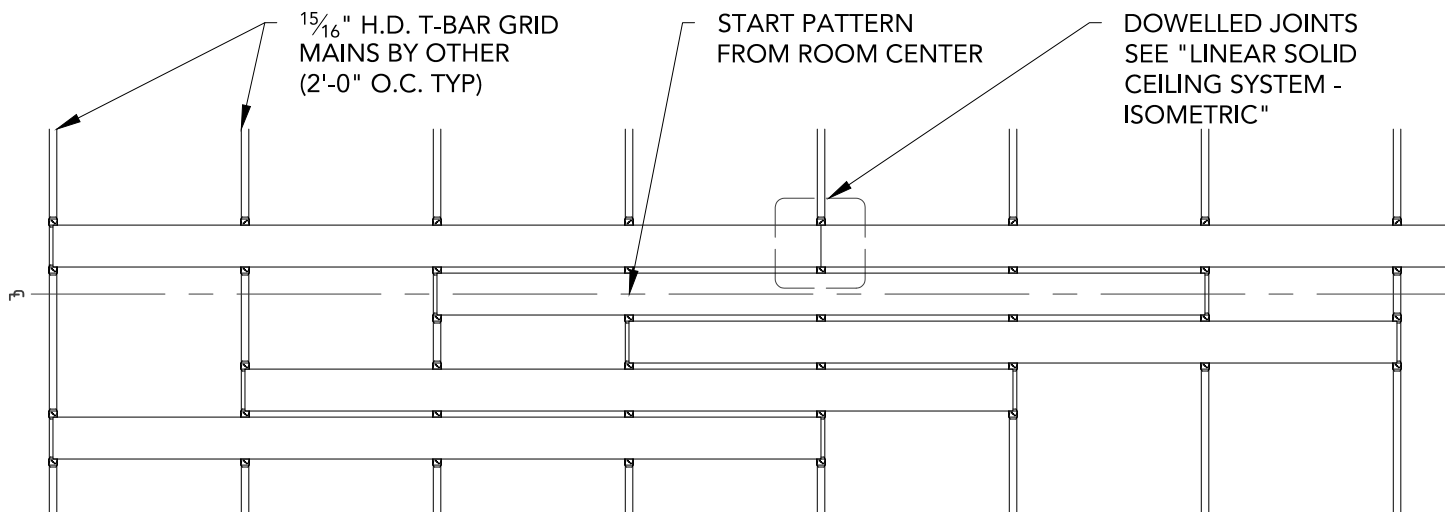
LINEAR T-GRID CLIP (TYP.)



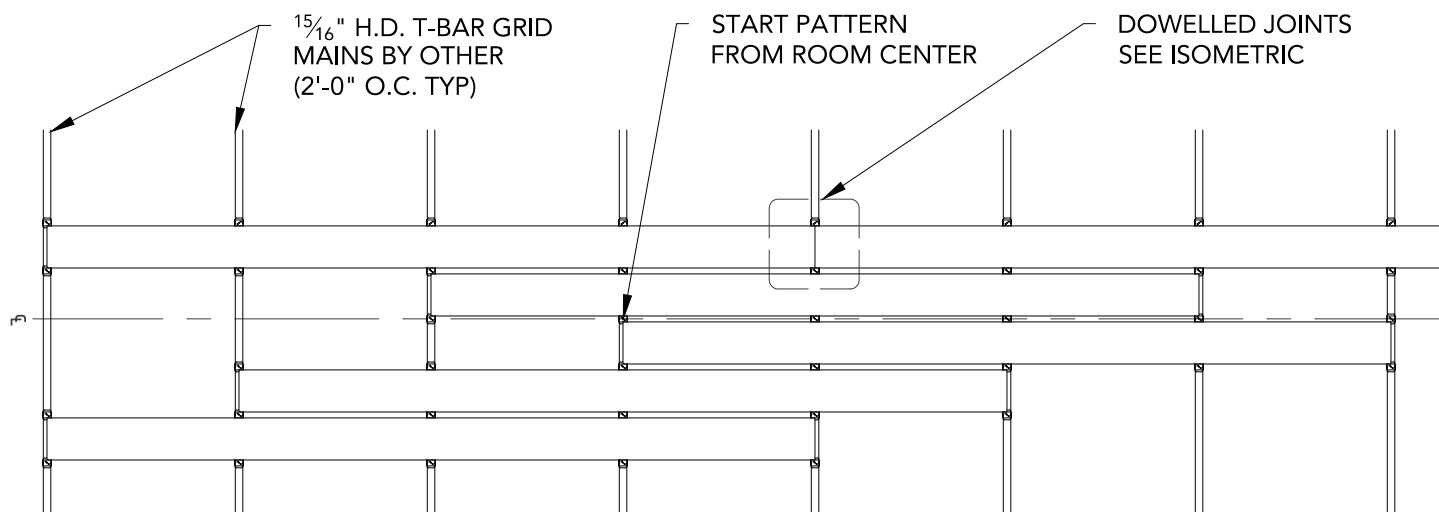
1

REVEAL OPTIONS

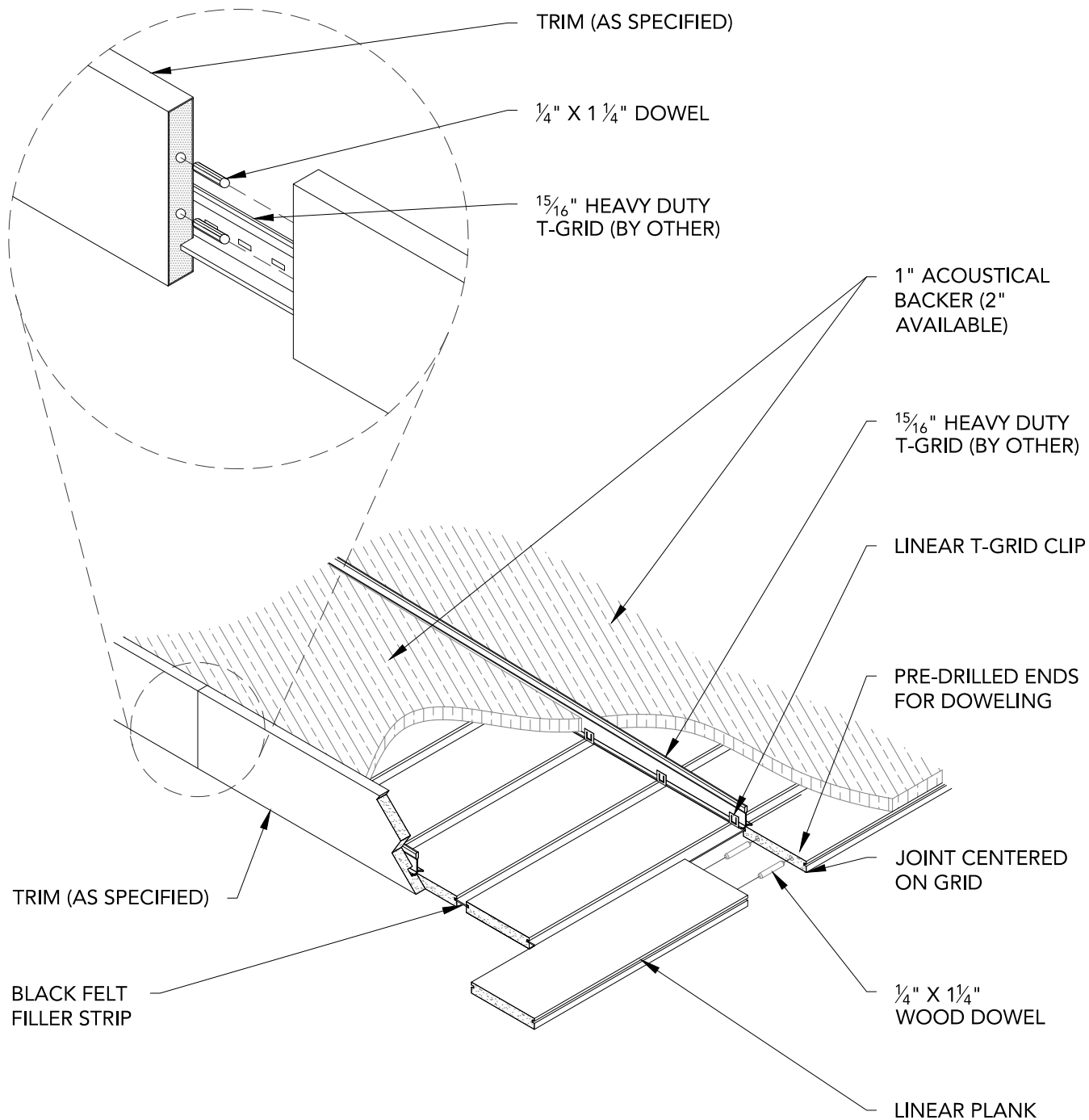
1' = 1'-0"



1 TYPICAL PATTERN RCP (OPTION 1 - CENTERED ON PLANK)
1/2" = 1'-0"



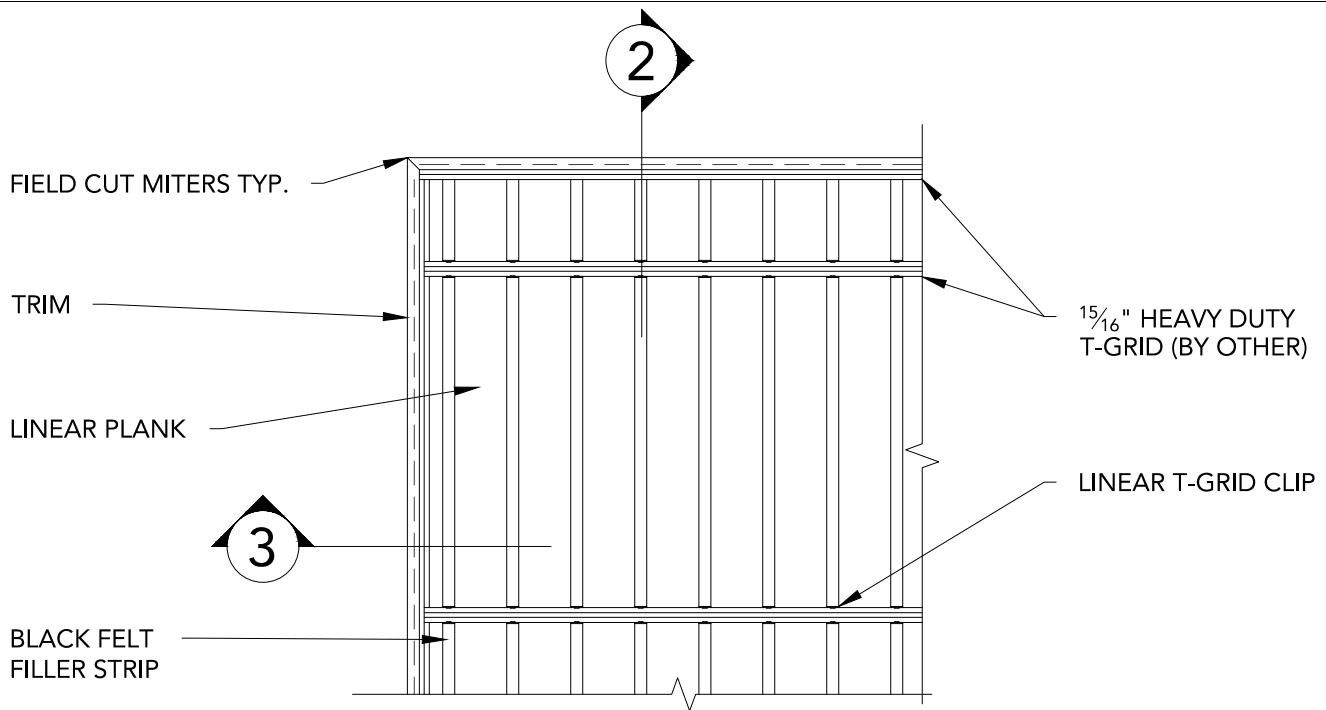
2 TYPICAL PATTERN RCP (OPTION 2 - CENTERED ON REVEAL)
1/2" = 1'-0"



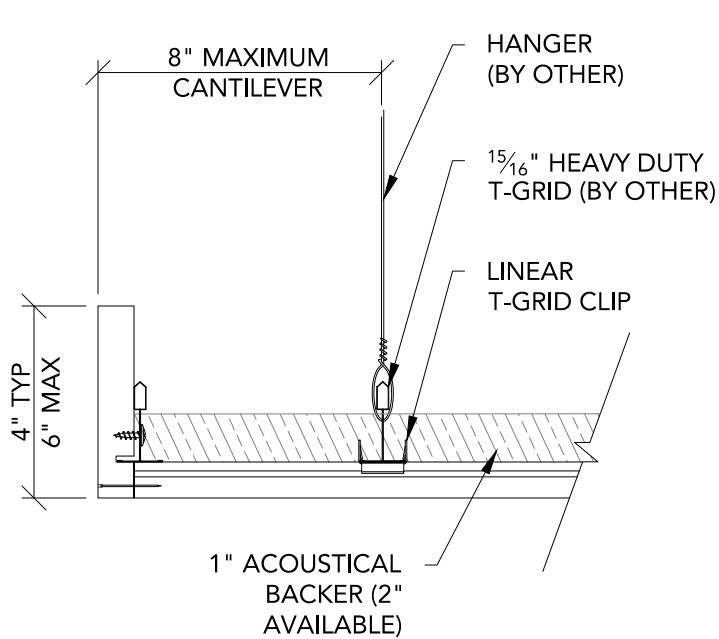
1

ISOMETRIC VIEW - TYP.

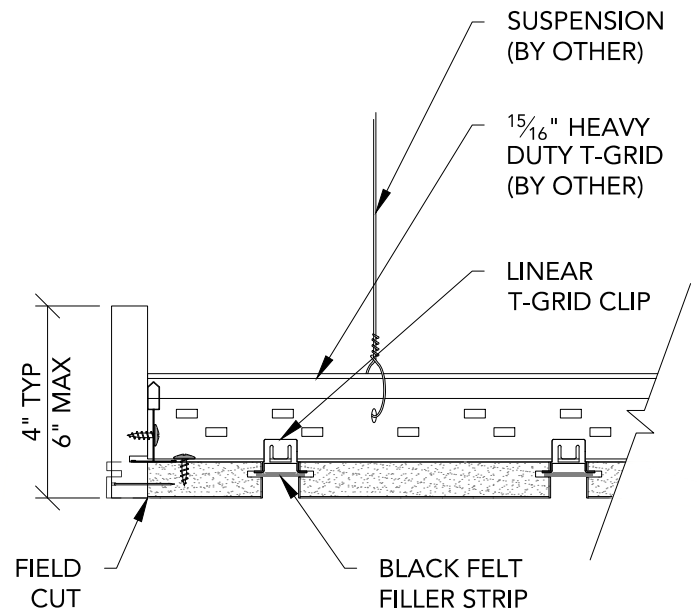
3" = 1'-0"



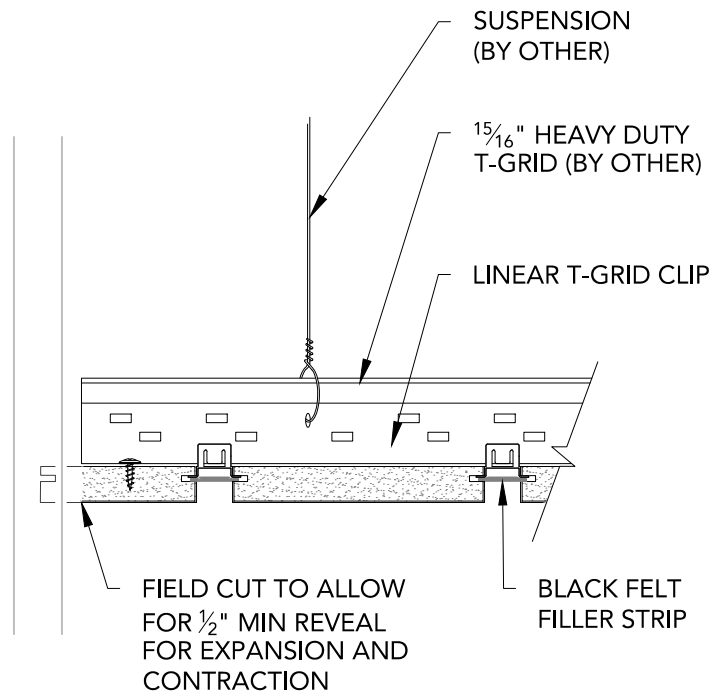
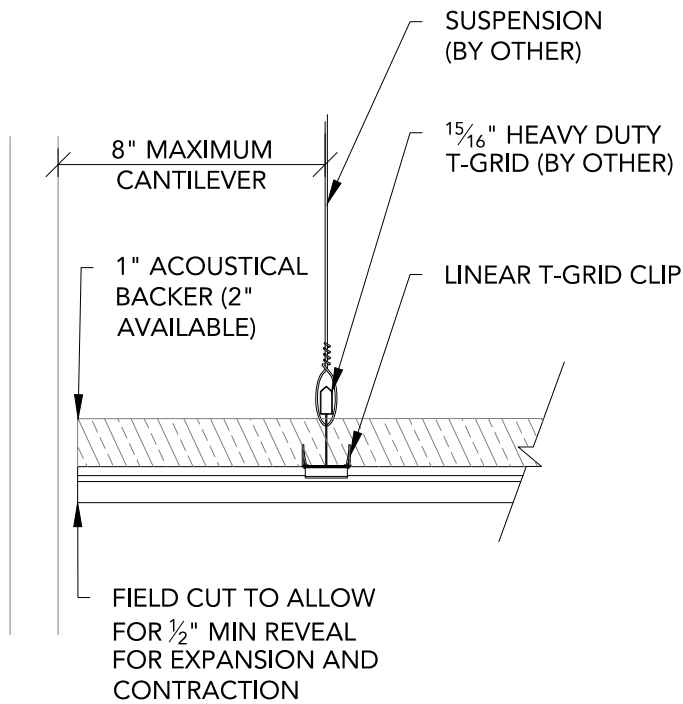
1 CLOUD VERTICAL TRIM PLAN
1" = 1'-0"



2 TRIM @ EDGE - FRONT SECTION
3" = 1'-0"

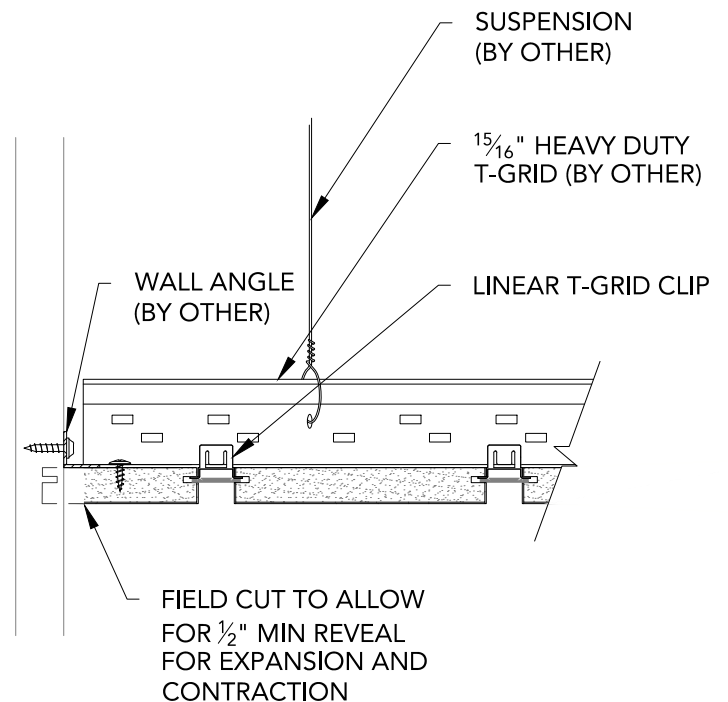
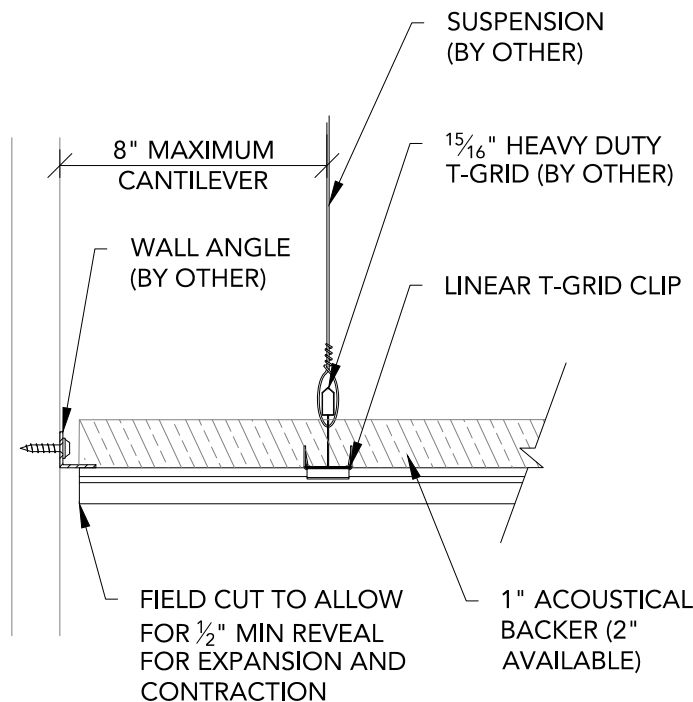


3 TRIM @ EDGE - SIDE SECTION
3" = 1'-0"



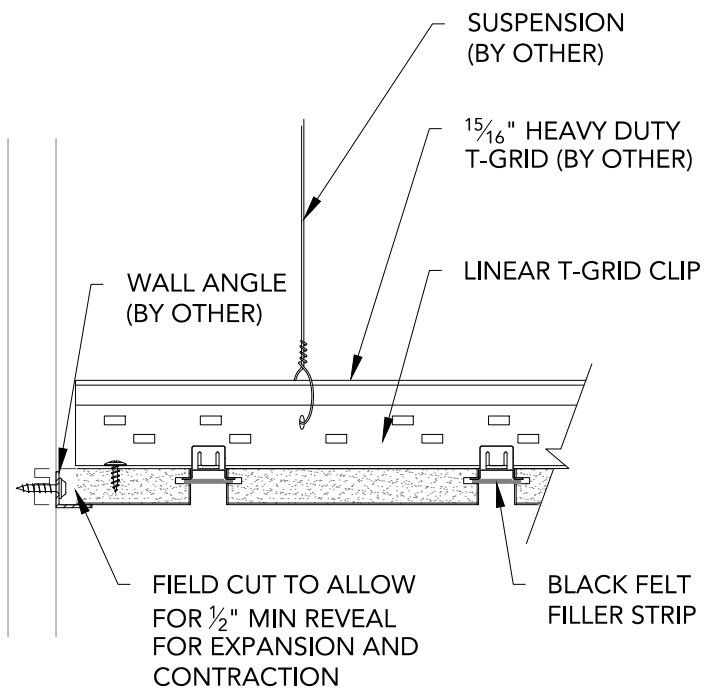
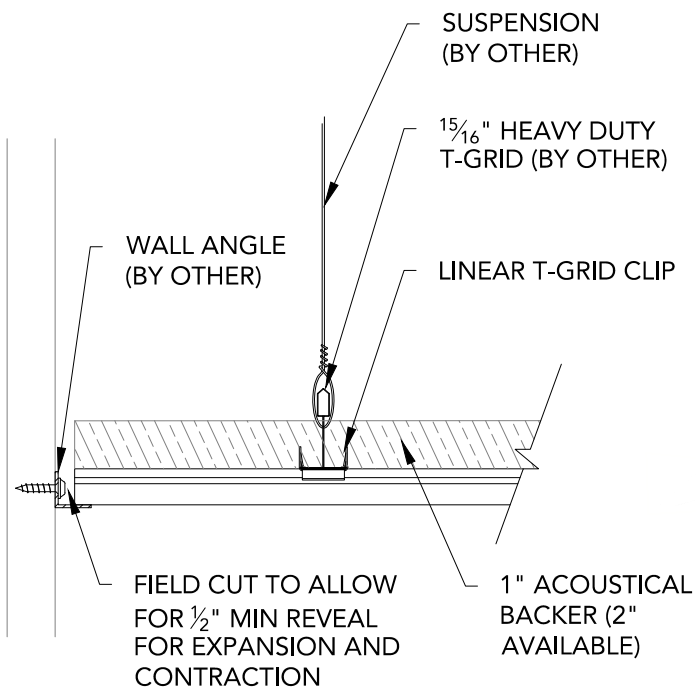
1 FLOATING - SIDE SECTION
3" = 1'-0"

2 FLOATING - FRONT SECTION
3" = 1'-0"



3 WALL ANGLE ABOVE - SIDE SECTION
3" = 1'-0"

4 WALL ANGLE ABOVE - FRONT SECTION
3" = 1'-0"



1 WALL ANGLE BELOW - SIDE SECTION
3" = 1'-0"

2 WALL ANGLE BELOW - FRONT SECTION
3" = 1'-0"

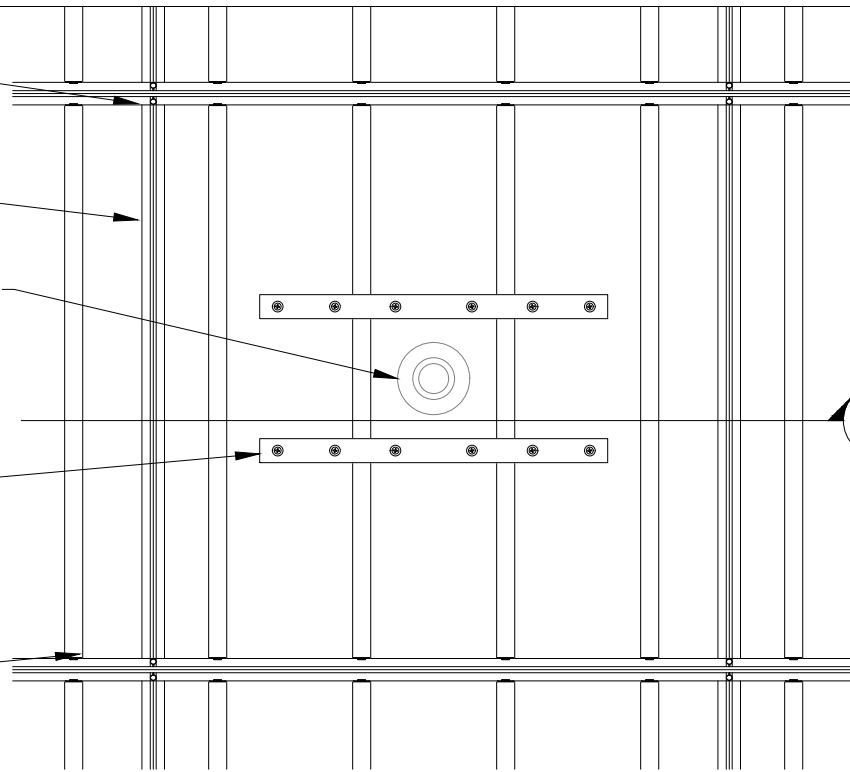
15/16" HEAVY DUTY
T-GRID (BY OTHER)

LINEAR PLANK

INDEPENDENTLY SUPPORTED
SPRINKLER: FIELD CUT
PENETRATION

IF PENETRATION EXCEEDS
2/3 BOARD WIDTH, SUPPORT
BRACKETS ARE NEEDED
(BY OTHER)

LINEAR T-GRID CLIP



1

SPRINKLER HEAD DETAIL - PLAN VIEW

1 1/2" = 1'-0"

IF PENETRATION EXCEEDS
2/3 BOARD WIDTH, SUPPORT
BRACKETS ARE NEEDED
(BY OTHER)

SUSPENSION (BY OTHER)

LINEAR T-GRID CLIP

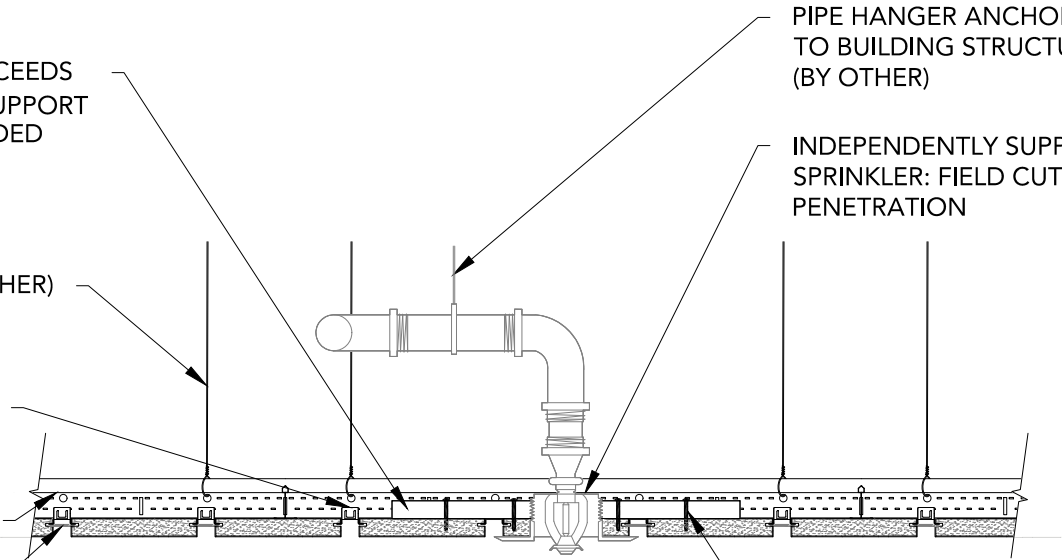
15/16" HEAVY DUTY
T-GRID (BY OTHER)

BLACK FELT
FILLER STRIP

PIPE HANGER ANCHORED
TO BUILDING STRUCTURE
(BY OTHER)

INDEPENDENTLY SUPPORTED
SPRINKLER: FIELD CUT
PENETRATION

SUPPORT BRACKET
FASTENED W/ SCREWS
TO PLANKS (BY OTHER)



2

SPRINKLER HEAD DETAIL - SECTION VIEW

1 1/2" = 1'-0"

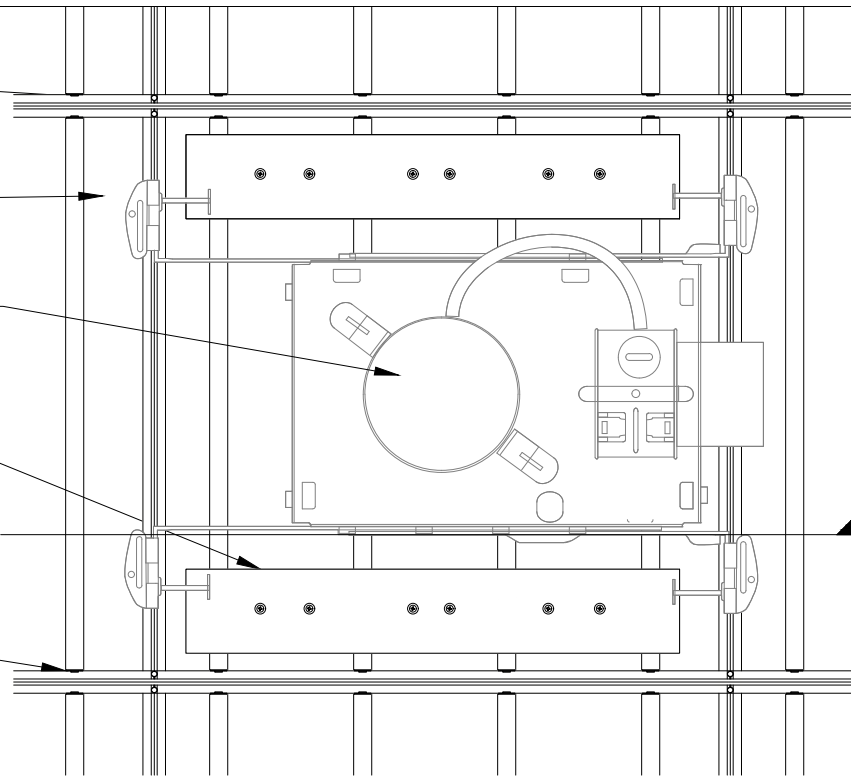
15/16" HEAVY DUTY
T-GRID (BY OTHER)

LINEAR PLANK

INDEPENDENTLY SUPPORTED
CAN LIGHT: FIELD CUT
PENETRATION

IF PENETRATION EXCEEDS
2/3 BOARD WIDTH, SUPPORT
BRACKETS ARE NEEDED
(BY OTHER)

LINEAR T-GRID CLIP



1 CAN LIGHT DETAIL - PLAN VIEW

1 1/2" = 1'-0"

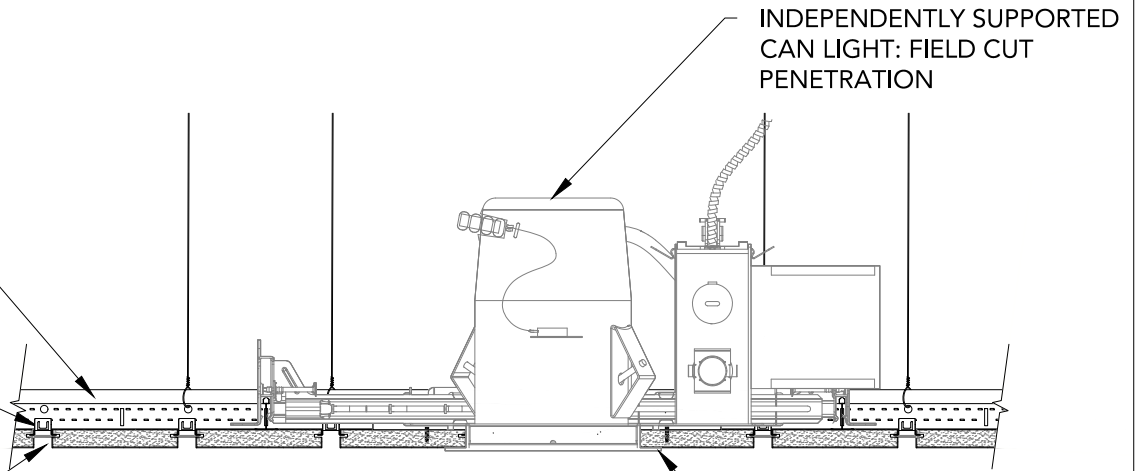
15/16" HEAVY DUTY
T-GRID (BY OTHER)

LINEAR T-GRID CLIP

BLACK FELT
FILLER STRIP

INDEPENDENTLY SUPPORTED
CAN LIGHT: FIELD CUT
PENETRATION

TRIM RING (BY OTHER)



2 CAN LIGHT DETAIL - SECTION VIEW

1 1/2" = 1'-0"

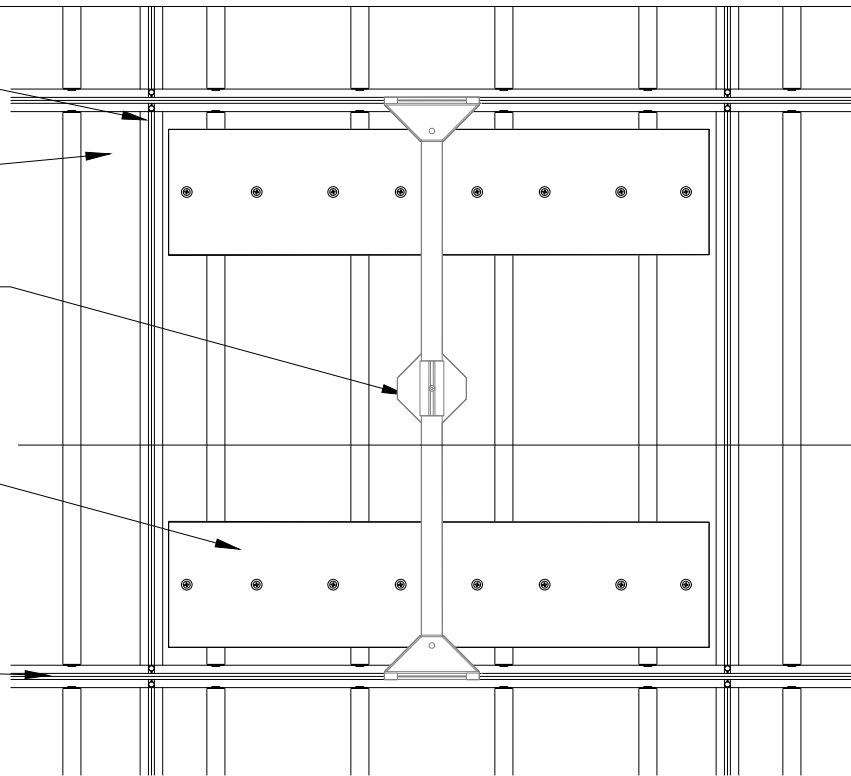
15/16" HEAVY DUTY
T-GRID (BY OTHER)

LINEAR PLANK

INDEPENDENTLY SUPPORTED
PENDANT LIGHT: FIELD CUT
PENETRATION

IF PENETRATION EXCEEDS
2/3 BOARD WIDTH, SUPPORT
BRACKETS ARE NEEDED
(BY OTHER)

LINEAR T-GRID CLIP



1

PENDANT LIGHT DETAIL - PLAN VIEW

1 1/2" = 1'-0"

INDEPENDENTLY SUPPORTED
PENDANT LIGHT: FIELD CUT
PENETRATION

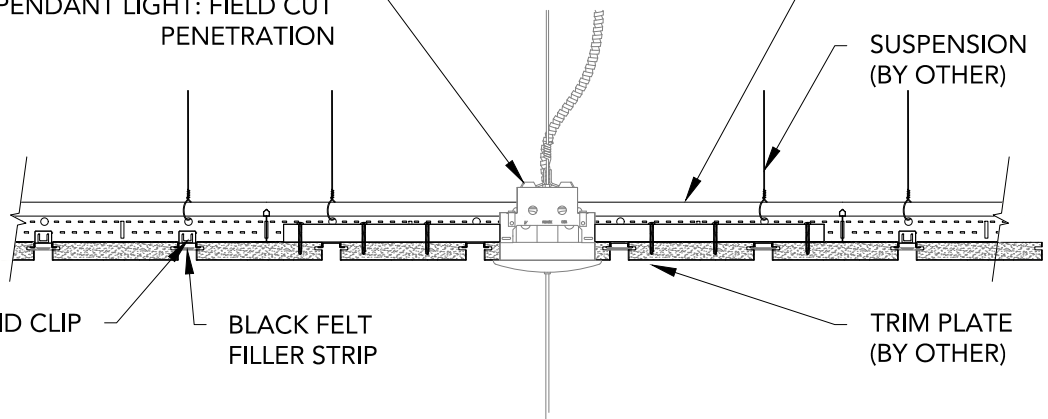
LINEAR T-GRID CLIP

BLACK FELT
FILLER STRIP

15/16" HEAVY DUTY
T-GRID (BY OTHER)

SUSPENSION
(BY OTHER)

TRIM PLATE
(BY OTHER)



2

PENDANT LIGHT DETAIL - SECTION DETAIL

1 1/2" = 1'-0"

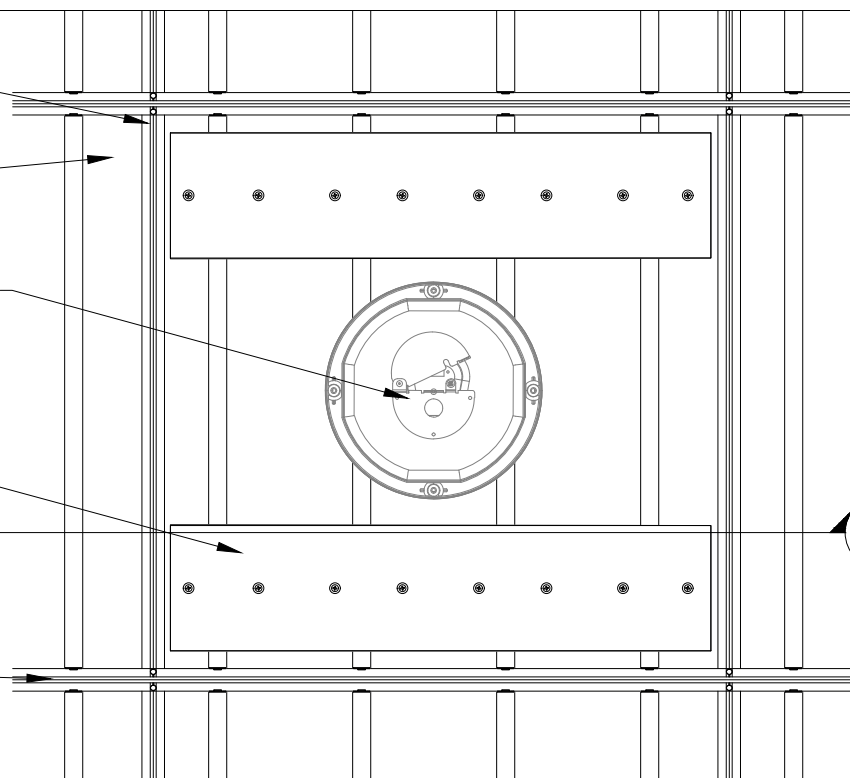
1 $\frac{5}{16}$ " HEAVY DUTY
T-GRID (BY OTHER)

LINEAR PLANK

INDEPENDENTLY SUPPORTED
SPEAKER: FIELD CUT
PENETRATION

IF PENETRATION EXCEEDS
 $\frac{2}{3}$ BOARD WIDTH, SUPPORT
BRACKETS ARE NEEDED
(BY OTHER)

LINEAR T-GRID CLIP



1

RECESSED SPEAKER DETAIL - PLAN VIEW

1 1/2" = 1'-0"

INDEPENDENTLY SUPPORTED
SPEAKER: FIELD CUT
PENETRATION

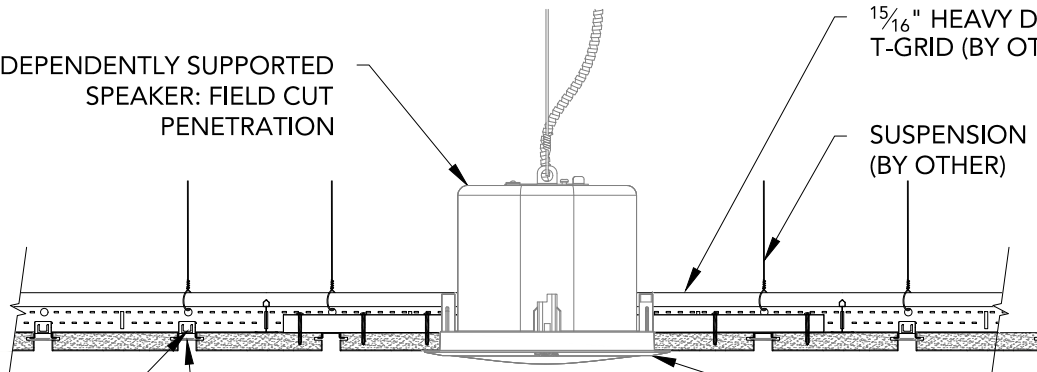
LINEAR T-GRID CLIP

BLACK FELT
FILLER STRIP

1 $\frac{5}{16}$ " HEAVY DUTY
T-GRID (BY OTHER)

SUSPENSION
(BY OTHER)

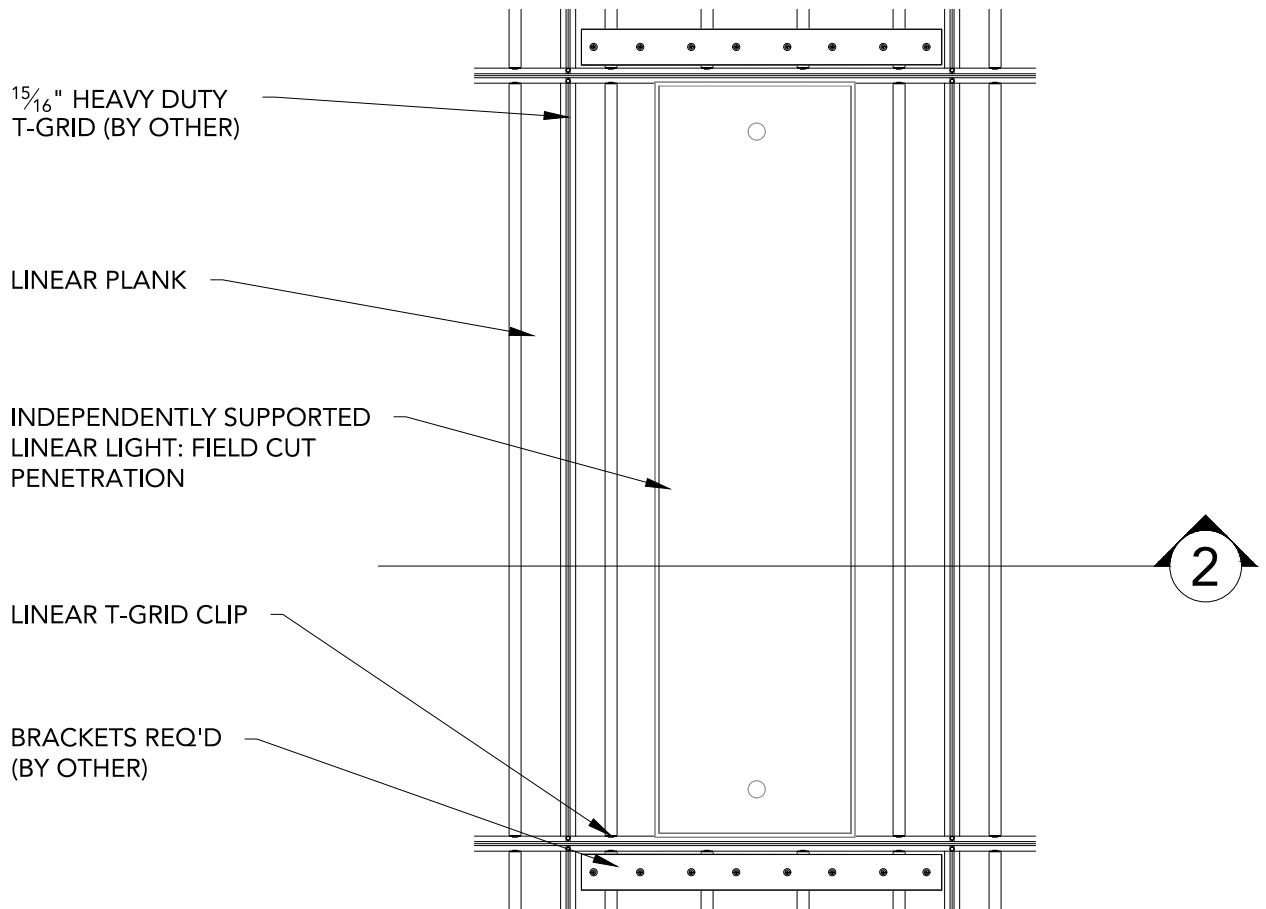
TRIM PLATE
(BY OTHER)



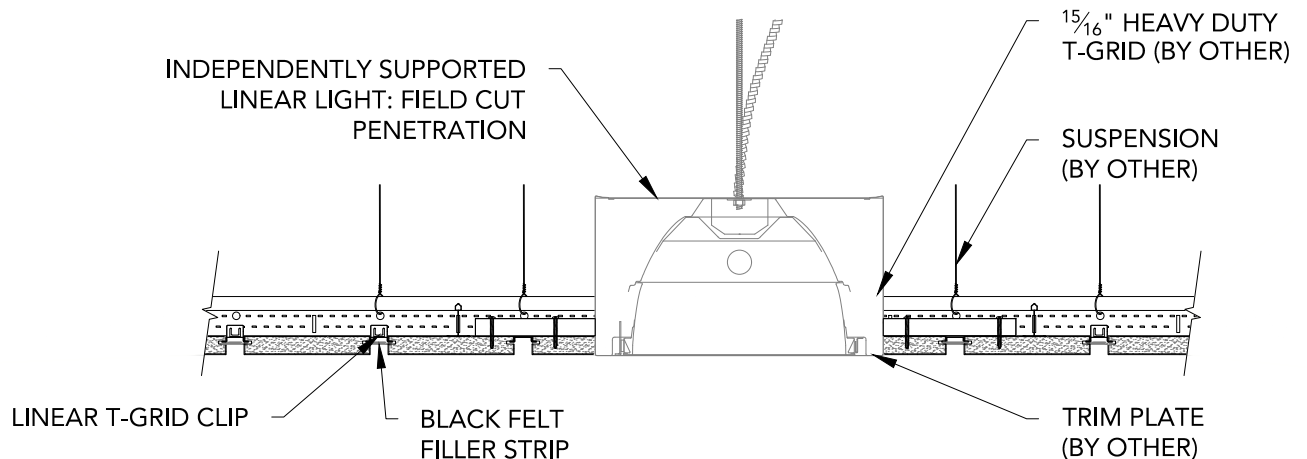
2

RECESSED SPEAKER DETAIL - SECTION VIEW

1 1/2" = 1'-0"



1 LINEAR LIGHT DETAIL - PLAN VIEW
1" = 1'-0"



2 LINEAR LIGHT DETAIL - SECTION VIEW
1 1/2" = 1'-0"

15/16" HEAVY DUTY
T-GRID (BY OTHER)

LINEAR PLANK

INDEPENDENTLY
SUPPORTED
DIFFUSER: FIELD CUT
PENETRATION

IF PENETRATION EXCEEDS
2/3 BOARD WIDTH,
SUPPORT BRACKETS ARE
NEEDED (BY OTHER)

LINEAR T-GRID CLIP

2

1

LINEAR DIFFUSER DETAIL - PLAN VIEW

1 1/2" = 1'-0"

15/16" HEAVY DUTY
T-GRID (BY OTHER)

LINEAR T-GRID CLIP

BLACK FELT
FILLER STRIP

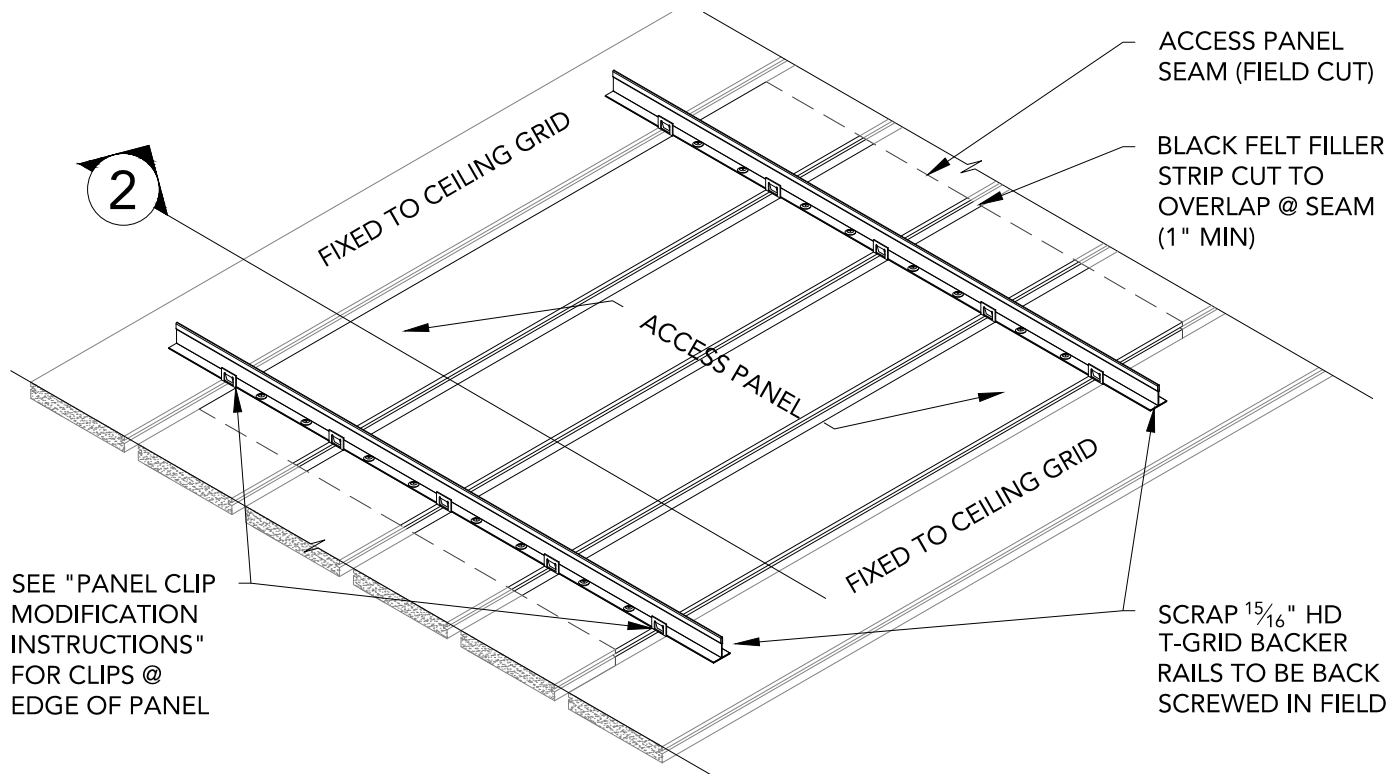
INDEPENDENTLY
SUPPORTED
DUCTWORK
(BY OTHER)

INDEPENDENTLY SUPPORTED
DIFFUSER: FIELD CUT
PENETRATION

2

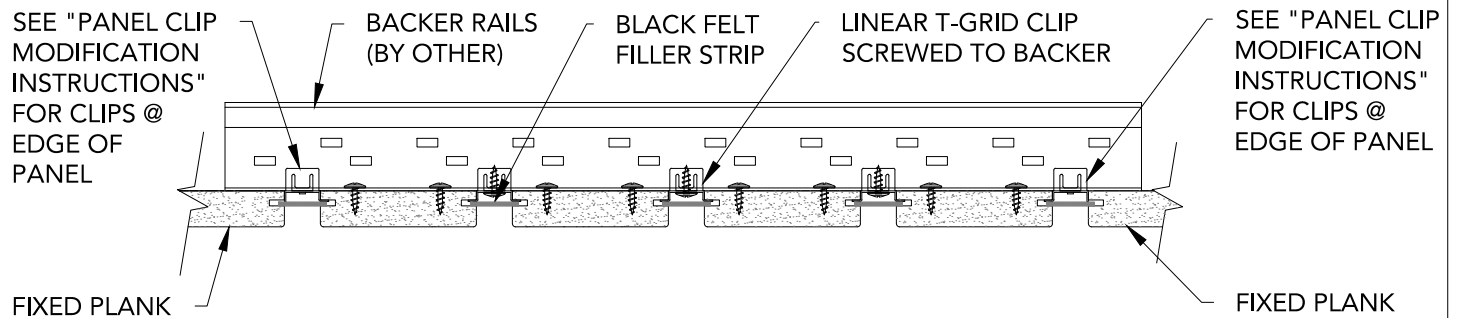
LINEAR DIFFUSER DETAIL - SECTION VIEW

1 1/2" = 1'-0"



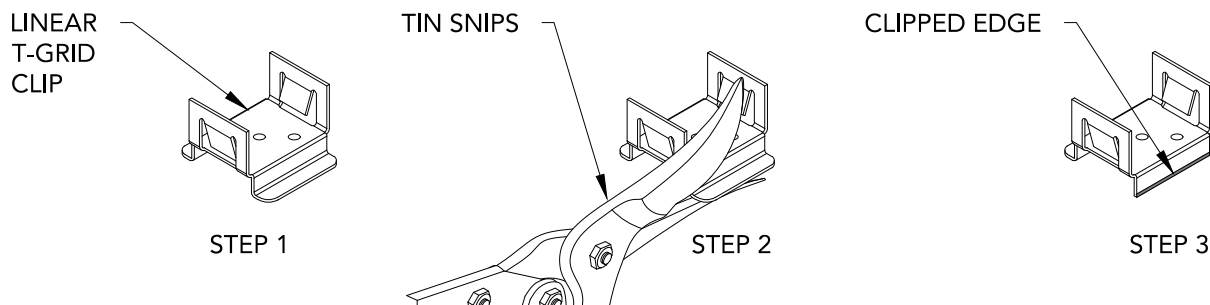
1 LINWOOD III ACCESS PANEL DETAIL

1 1/2" = 1'-0"



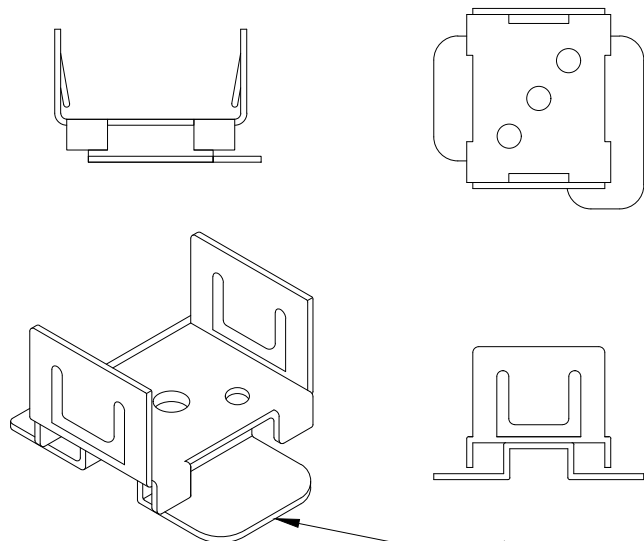
2 LINWOOD III ACCESS PANEL SECTION

3" = 1'-0"



3 PANEL CLIP MODIFICATION INSTRUCTIONS

6" = 1'-0"



15/16" LINEAR ACCESS CLIP

NOTES:
ACCESS CLIPS INSTALL THE SAME WAY AS STANDARD CLIPS

THE ACCESS CLIPS HAVE TWO PARTS THAT ALLOW THE BOTTOM PART (THE PART RECEIVED BY THE RABBET IN THE LINEAR PLANK) TO SWIVEL AND DISENGAGE FROM THE RABBET

CLIPS CAN BE TURNED WITH A STANDARD FLAT HEAD SCREWDRIVER FROM THE FLOOR SIDE

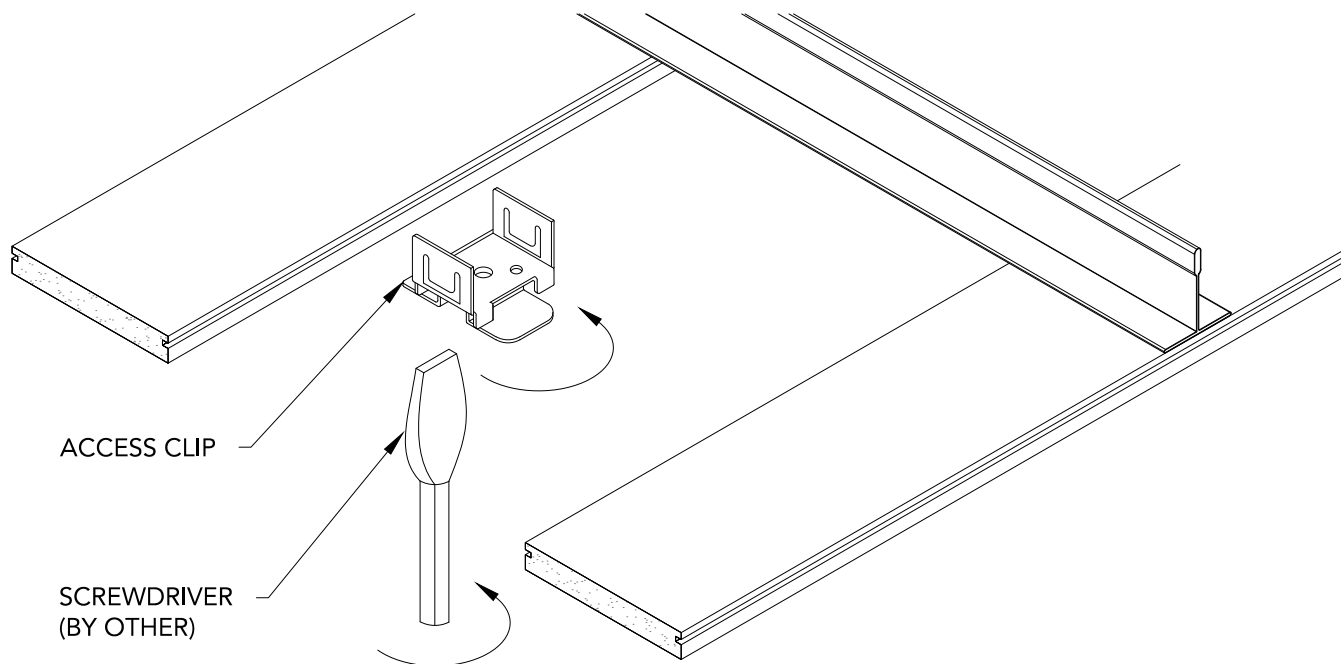
$\frac{3}{8}$ " MINIMUM REVEAL BETWEEN PLANKS FOR ACCESS CLIP OPERATION

DO NOT INSERT DOWELS INTO ACCESS PANEL PLANKS INTENDED TO BE REMOVED - BUTT JOINT MUST LAND ON GRID

ACCESS CLIPS ALLOW FOR SEAMLESS ACCESS, WHERE INDIVIDUAL PLANKS MAY BE REMOVED AS OPPOSED TO CONSTRUCTING AN ACCESS PANEL

1 ACCESS CLIP DETAIL

1' = 1'-0"



ACCESS CLIP

SCREWDRIVER
(BY OTHER)

2 ACCESS CLIP INSTALL

6" = 1'-0"

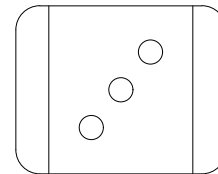
FURRING (BY OTHER) TO
MATCH ACOUSTICAL
BACKER THICKNESS

BLACK FELT
FILLER STRIPS

1" ACOUSTICAL BACKER
(2" AVAILABLE)

LINEAR DIRECT ATTACH CLIP
SCREWED TO FURRING

TYP. WALL ASSEMBLY
(BY OTHER)



LINEAR DIRECT
ATTACH CLIP

1

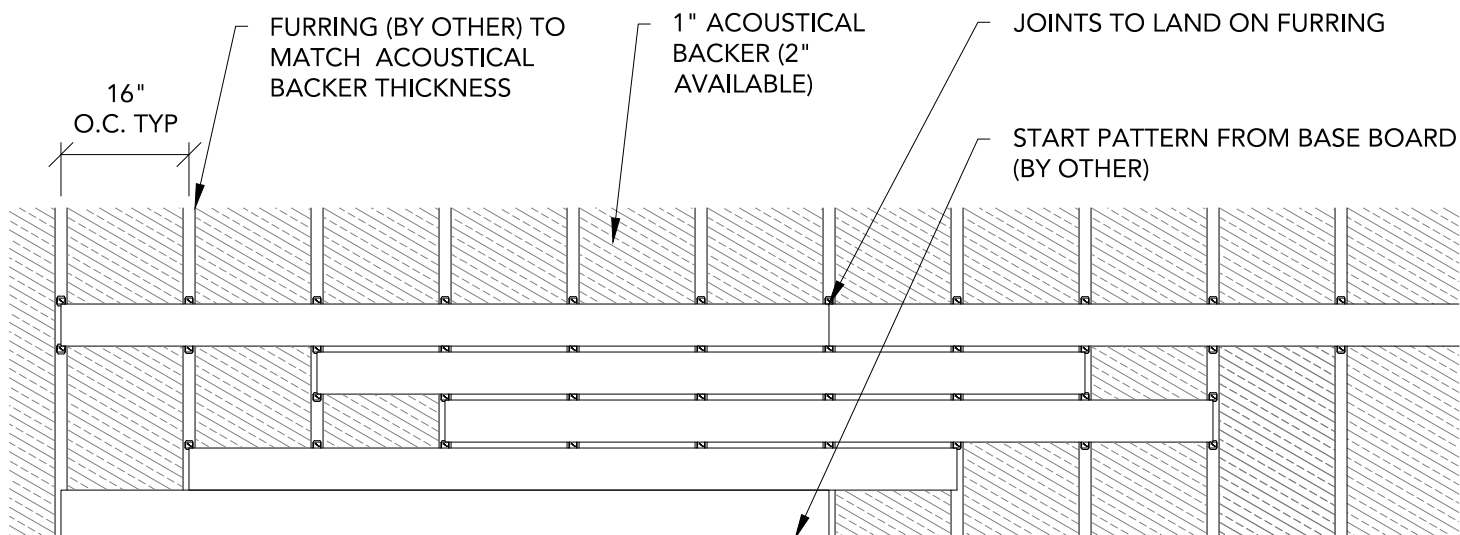
LINEAR HORIZONTAL WALL SECTION

3" = 1'-0"

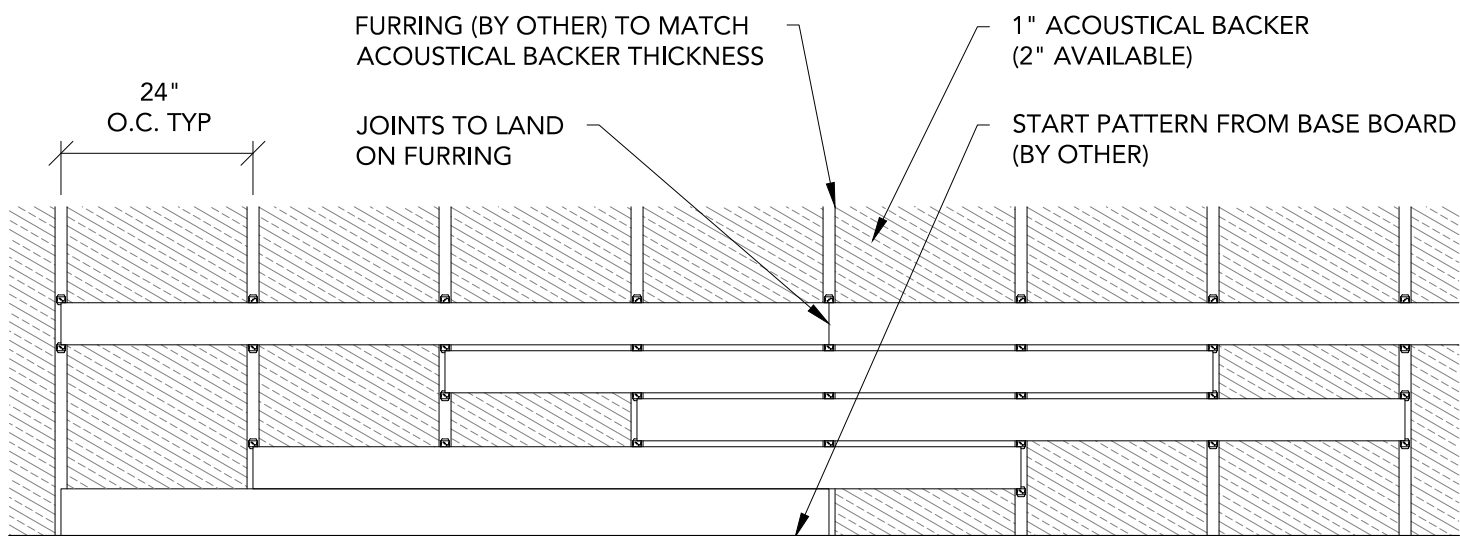
2

DIRECT ATTACHMENT CLIP

1' = 1'-0"



1 TYPICAL HORIZONTAL STAGGERED WALL PATTERN - 16 INCH SPACING
 $1/2" = 1'-0"$



2 TYPICAL HORIZONTAL STAGGERED WALL PATTERN - 24 INCH SPACING
 $1/2" = 1'-0"$

2" BUGLE HEAD
SCREW (BY OTHER)

LINEAR DIRECT
ATTACHMENT CLIP

TYP. WALL ASSEMBLY
(BY OTHER)

FURRING (BY
OTHER) TO MATCH
ACOUSTICAL
BACKER
THICKNESS

1" ACOUSTICAL
BACKER (2"
AVAILABLE)

BLACK FELT
FILLER STRIP

16 GA. FINISH
NAIL (BY OTHER)

1 3/4" OR 2 3/4" (TO
COINCIDE W/ FURRING
THICKNESS) TRIM
FASTENED W/ FINISH
NAIL (OPTIONAL)

ALL JOINTS
CENTERED
ON FRAMING

DOWEL AS
REQUIRED

1

HORIZONTAL WALL SYSTEM ISOMETRIC

1 1/2" = 1'-0"

TYP. WALL
ASSEMBLY (BY
OTHER)

1" ACOUSTICAL BACKER
(2" AVAILABLE)

$\frac{3}{4}$ " TRIM FASTENED W/
FINISH NAIL AND PUTTIED
IN FIELD BY OTHER

LINEAR DIRECT ATTACH CLIP
SCREWED TO FURRING

FURRING (BY OTHER) TO
MATCH ACOUSTICAL
BACKER THICKNESS



1 HORIZONTAL WALL PLAN @ TRIM

3" = 1'-0"

LINEAR DIRECT
ATTACH CLIP
SCREWED TO
FURRING

FURRING (BY OTHER) TO
MATCH ACOUSTICAL
BACKER THICKNESS

$\frac{3}{4}$ " TRIM FASTENED W/
FINISH NAIL AND PUTTIED
IN FIELD BY OTHER

BLACK FELT FILLER STRIPS

2 HORIZONTAL WALL ELEVATION @ TRIM

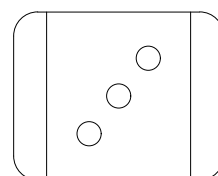
3" = 1'-0"

LINEAR DIRECT ATTACH CLIP
SCREWED TO FURRING

FURRING (BY OTHER) TO
MATCH ACOUSTICAL
BACKER THICKNESS

1" ACOUSTICAL BACKER
(2" AVAILABLE)

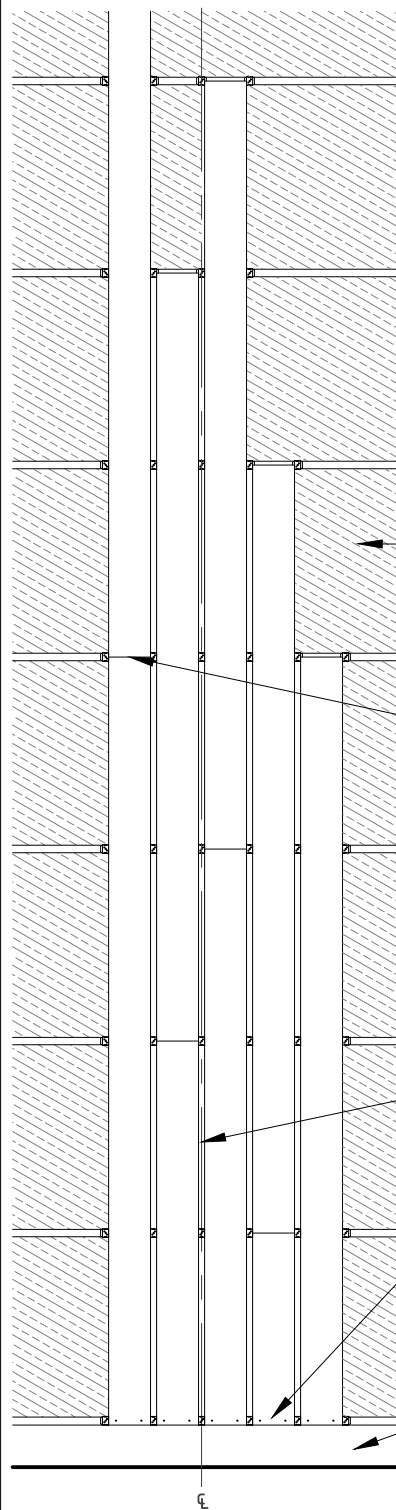
TYP. WALL SYSTEM
(BY OTHER)



LINEAR DIRECT
ATTACH CLIP

1 LINEAR VERTICAL WALL SECTION
3" = 1'-0"

2 DIRECT ATTACHMENT CLIP
1' = 1'-0"



1" ACOUSTICAL
BACKER (2"
AVAILABLE)

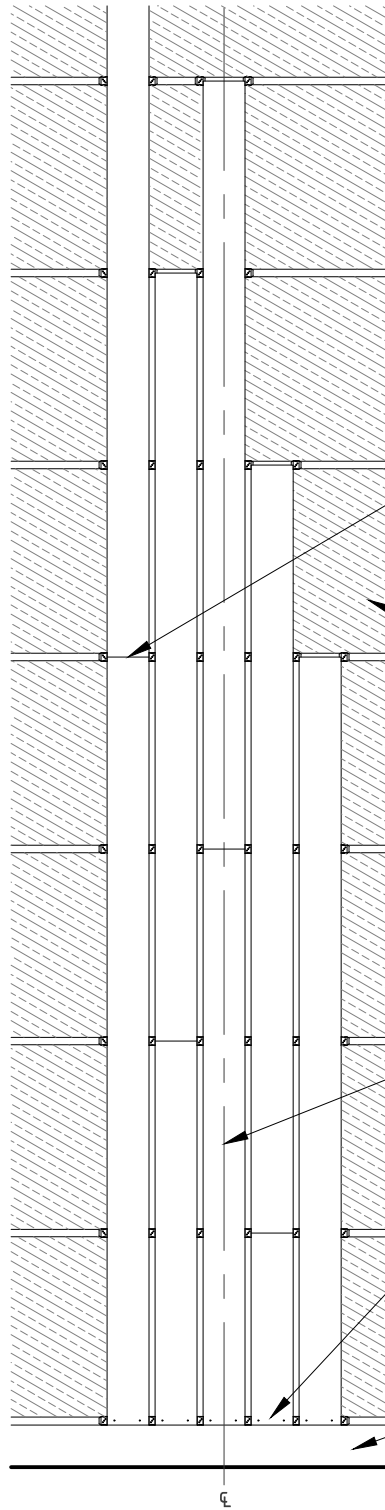
JOINTS TO LAND
ON FURRING

FURRING (BY
OTHER) TO MATCH
ACOUSTICAL
BACKER THICKNESS

START PATTERN
FROM ROOM CENTER

FACE NAILED AND
PUTTIED IN FIELD @
BASE

BASE AS SCHEDULED
(BY OTHER)



NOTE: START PATTERN
O.C. WITH REVEAL OR
PLANK - WHICHEVER
LEAVES THE LARGEST
POSSIBLE BOARD
WIDTH @ PERIMETER

JOINTS TO LAND
ON FURRING

1" ACOUSTICAL
BACKER (2"
AVAILABLE)

FURRING (BY
OTHER) TO MATCH
ACOUSTICAL
BACKER THICKNESS

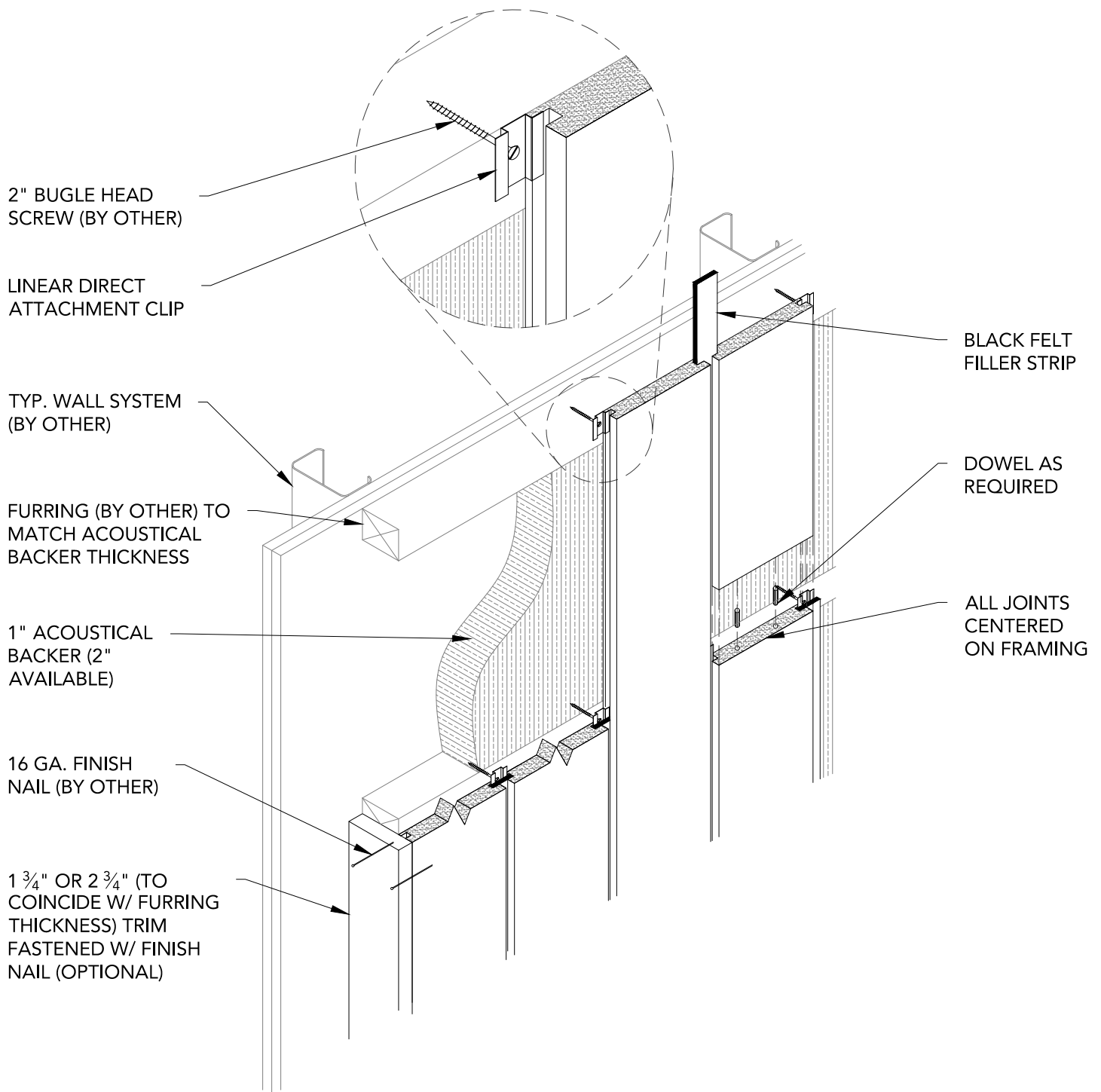
START PATTERN
FROM ROOM CENTER

FACE NAILED AND
PUTTIED IN FIELD
@ BASE

BASE AS SCHEDULED
(BY OTHER)

1 VERTICAL WALL PATTERN 1
1/2" = 1'-0"

2 VERTICAL WALL PATTERN 2
1/2" = 1'-0"



1

VERTICAL WALL SYSTEM ISOMETRIC

1 1/2" = 1'-0"

FURRING (BY OTHER) TO
MATCH ACOUSTICAL
BACKER THICKNESS

1" ACOUSTICAL BACKER
(2" AVAILABLE)

LINEAR DIRECT ATTACH
CLIP SCREWED TO
FURRING

3/4" TRIM FASTENED W/
FINISH NAIL AND PUTTIED
IN FIELD BY OTHER

TYP. WALL SYSTEM
(BY OTHER)

BLACK FELT
FILLER STRIPS



1 VERTICAL WALL PLAN @ TRIM

3" = 1'-0"

LINEAR DIRECT ATTACH
CLIP SCREWED TO
FURRING

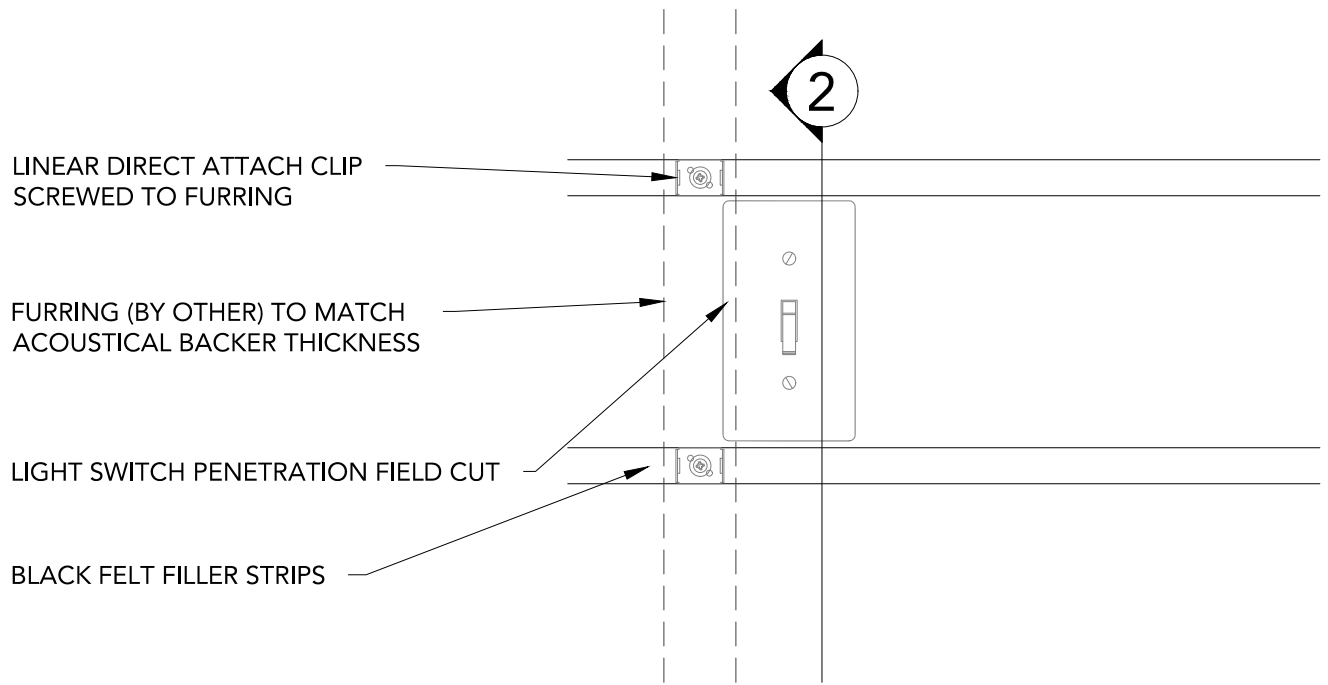
3/4" TRIM FASTENED W/
FINISH NAIL AND PUTTIED
IN FIELD BY OTHER

FURRING (BY OTHER) TO
MATCH ACOUSTICAL
BACKER THICKNESS

BLACK FELT FILLER STRIPS

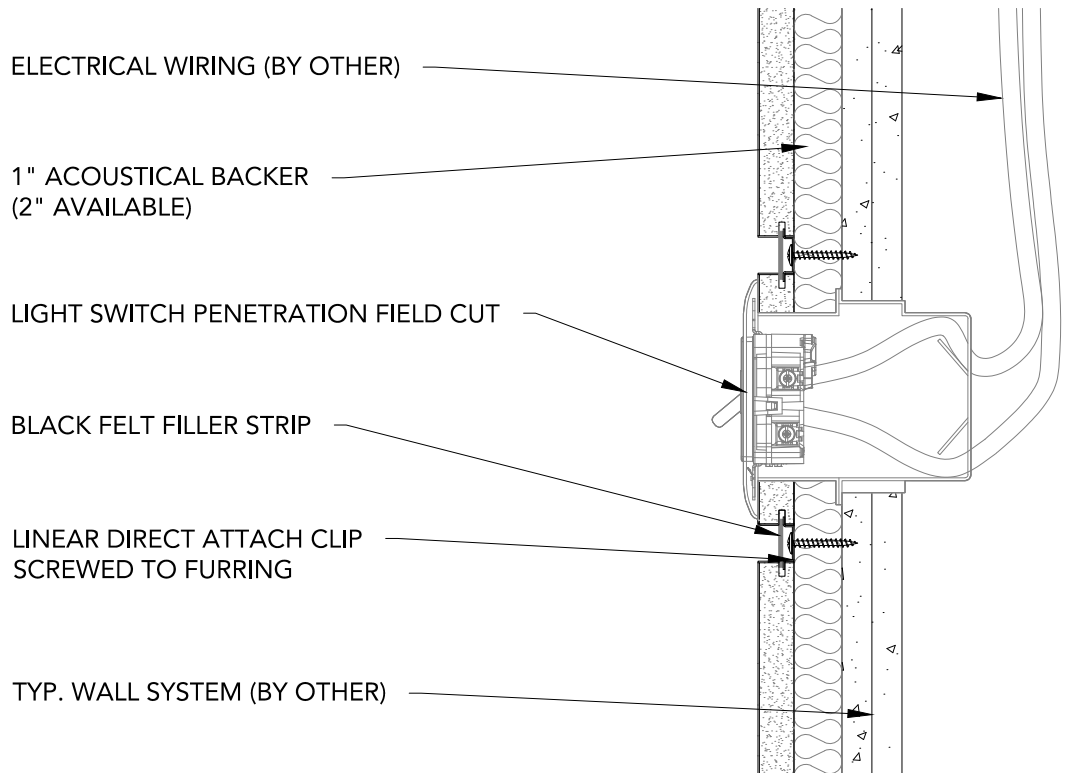
2 VERTICAL WALL ELEVATION @ TRIM

3" = 1'-0"



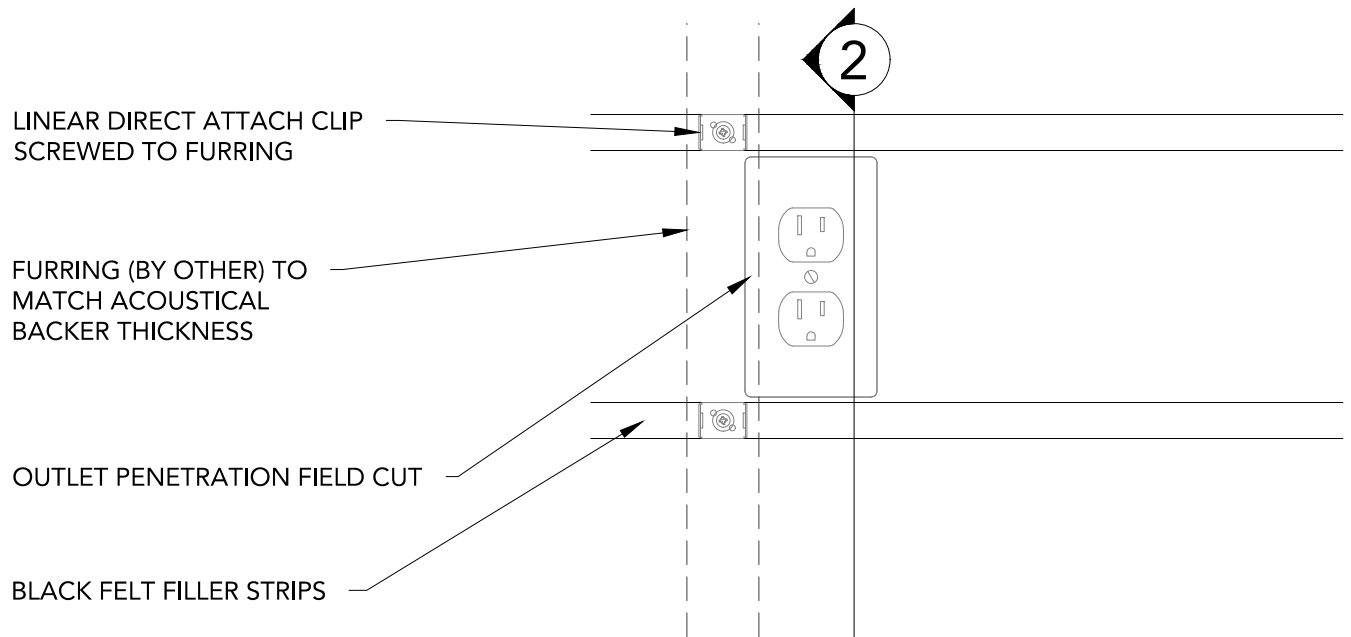
1 LIGHT SWITCH DETAIL - ELEVATION

3" = 1'-0"



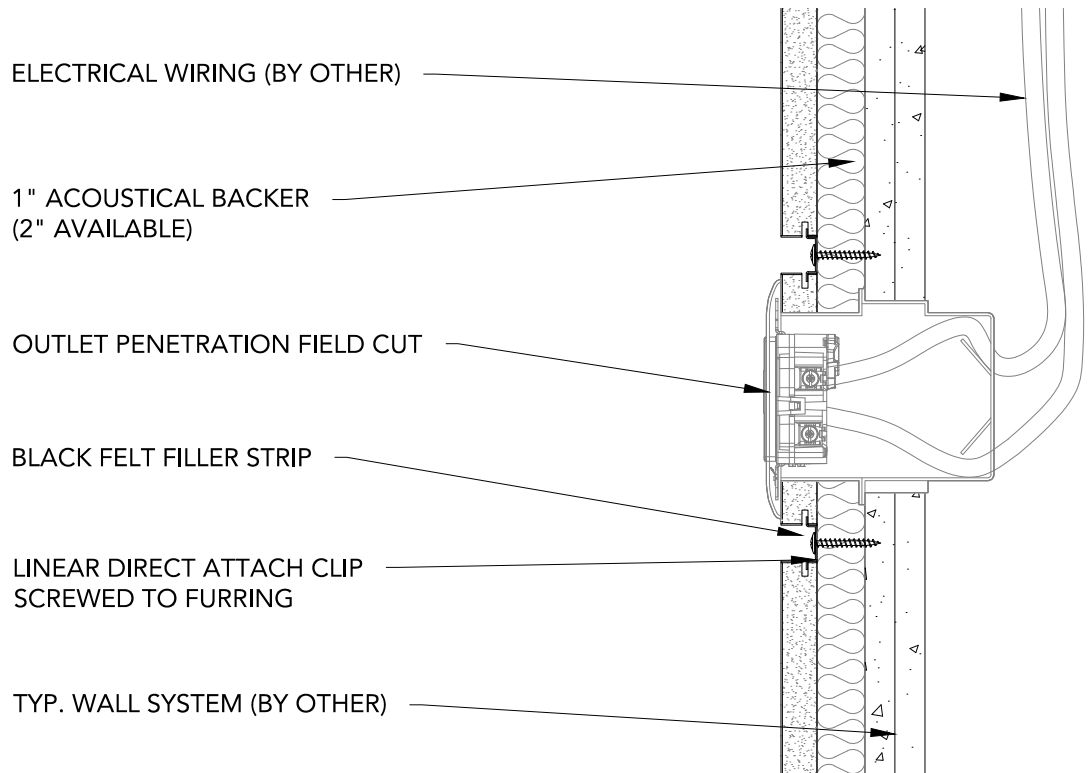
2 LIGHT SWITCH DETAIL - SECTION

3" = 1'-0"



1 OUTLET DETAIL - ELEVATION

3" = 1'-0"



2 OUTLET DETAIL - SECTION

3" = 1'-0"

BLACK FELT FILLER STRIPS

LINEAR DIRECT ATTACH CLIP
SCREWED TO FURRING

FURRING (BY OTHER) TO
MATCH ACOUSTICAL
BACKER THICKNESS

FACE NAIL & PUTTY IN FIELD

BASE AS SCHEDULED (BY OTHER)

2

1

BASEBOARD DETAIL - ELEVATION

3" = 1'-0"

LINEAR DIRECT ATTACH CLIP
SCREWED TO FURRING

BLACK FELT FILLER STRIP

1" ACOUSTICAL BACKER
(2" AVAILABLE)

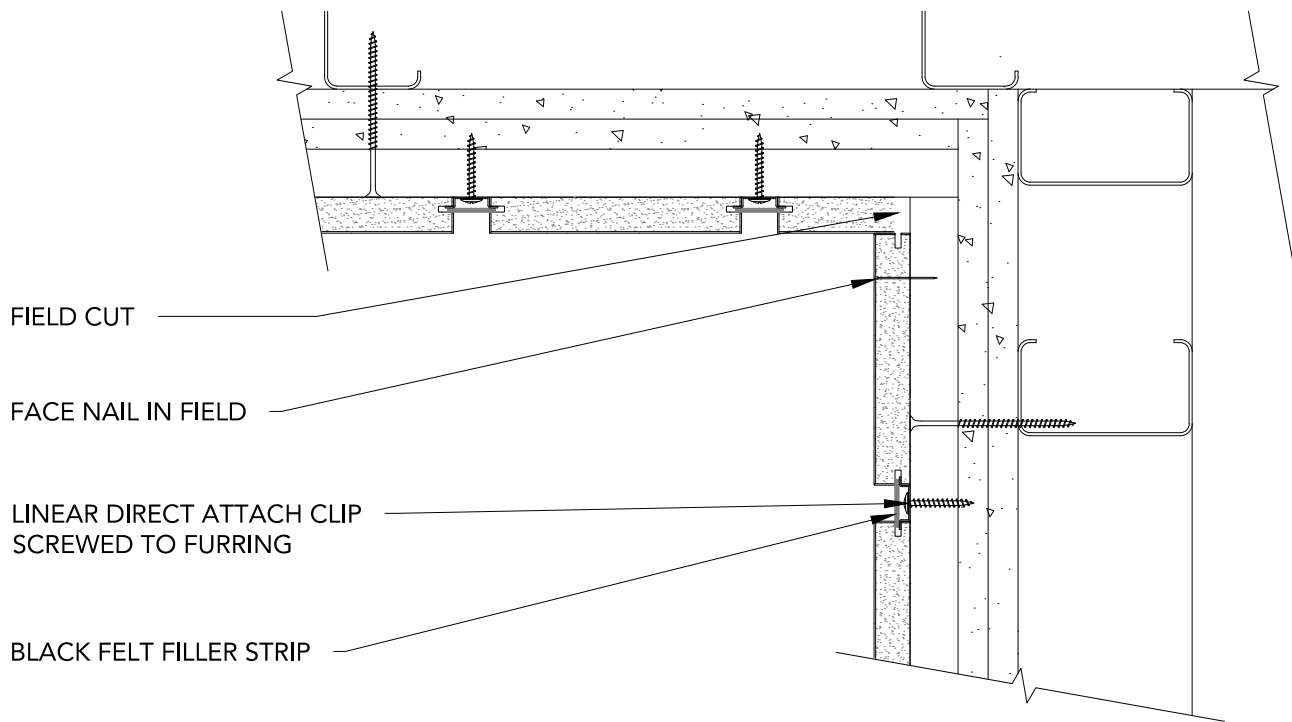
FACE NAIL & PUTTY IN FIELD

BASE AS SCHEDULED (BY OTHER)

2

BASEBOARD DETAIL - SECTION

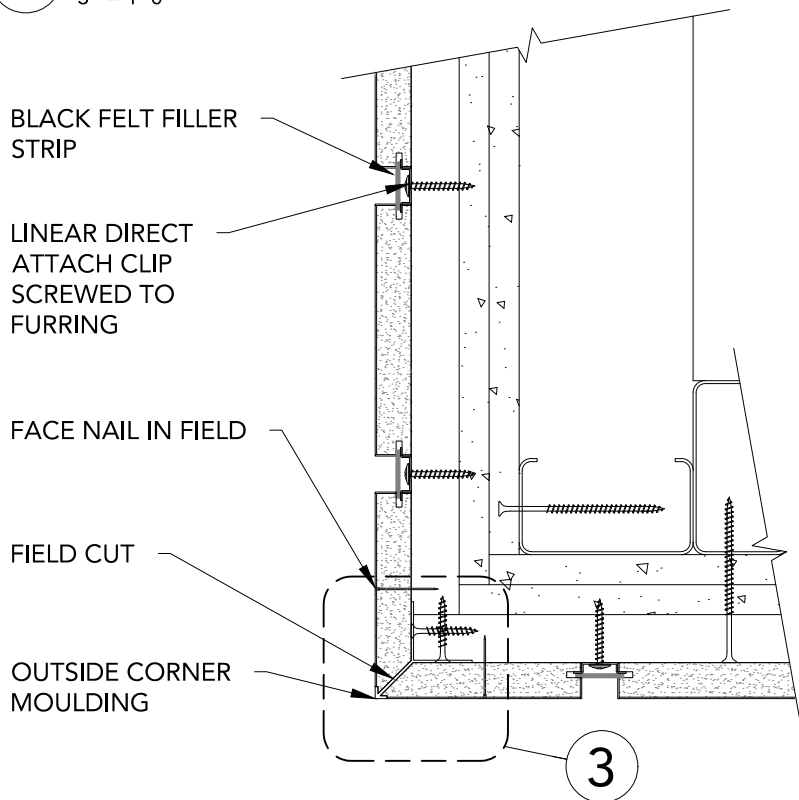
3" = 1'-0"



1

VERTICAL PLANK INSIDE CORNER PLAN

3" = 1'-0"

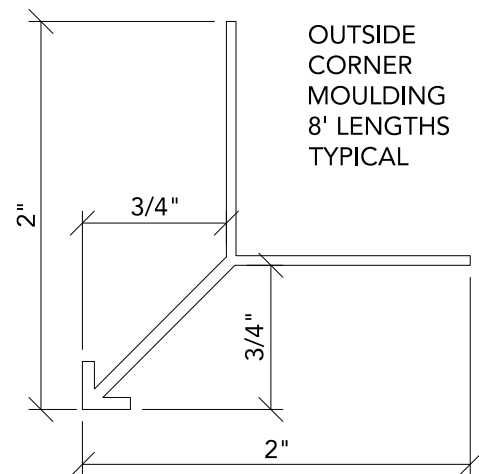


3

2

VERTICAL PLANK OUTSIDE CORNER PLAN

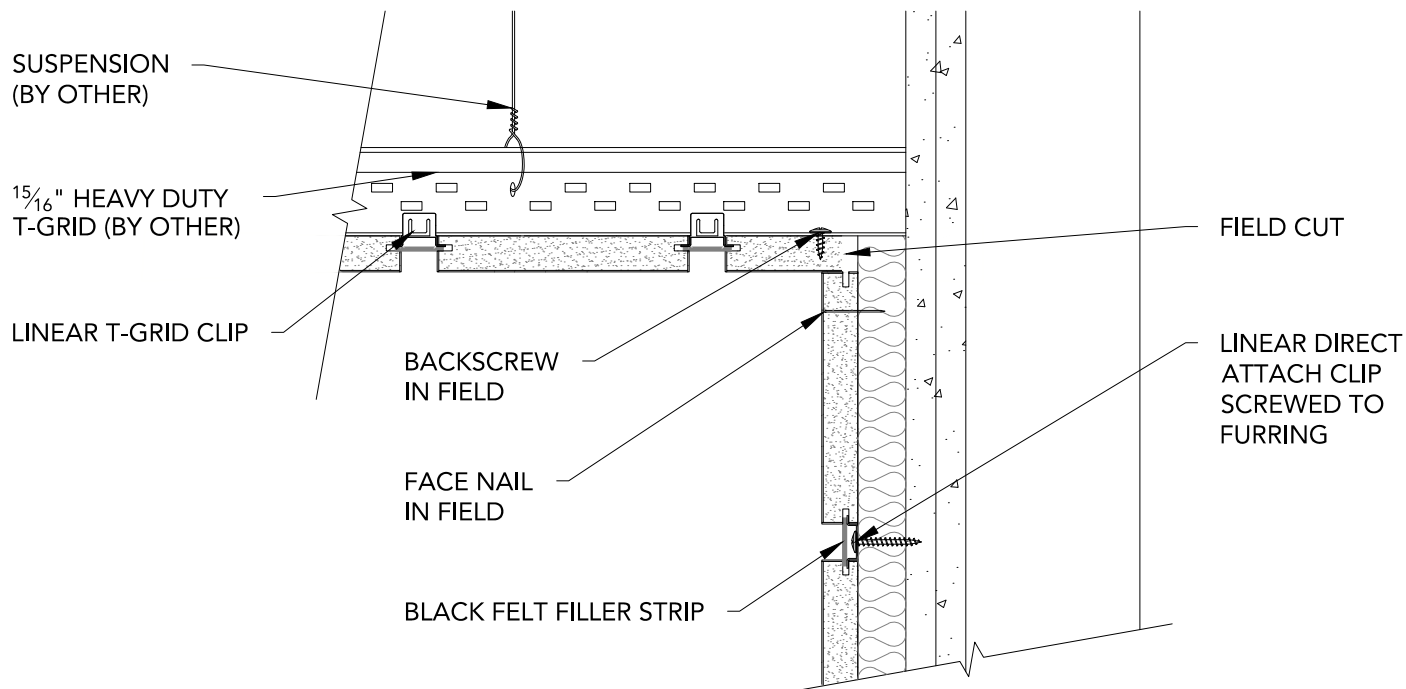
3" = 1'-0"



3

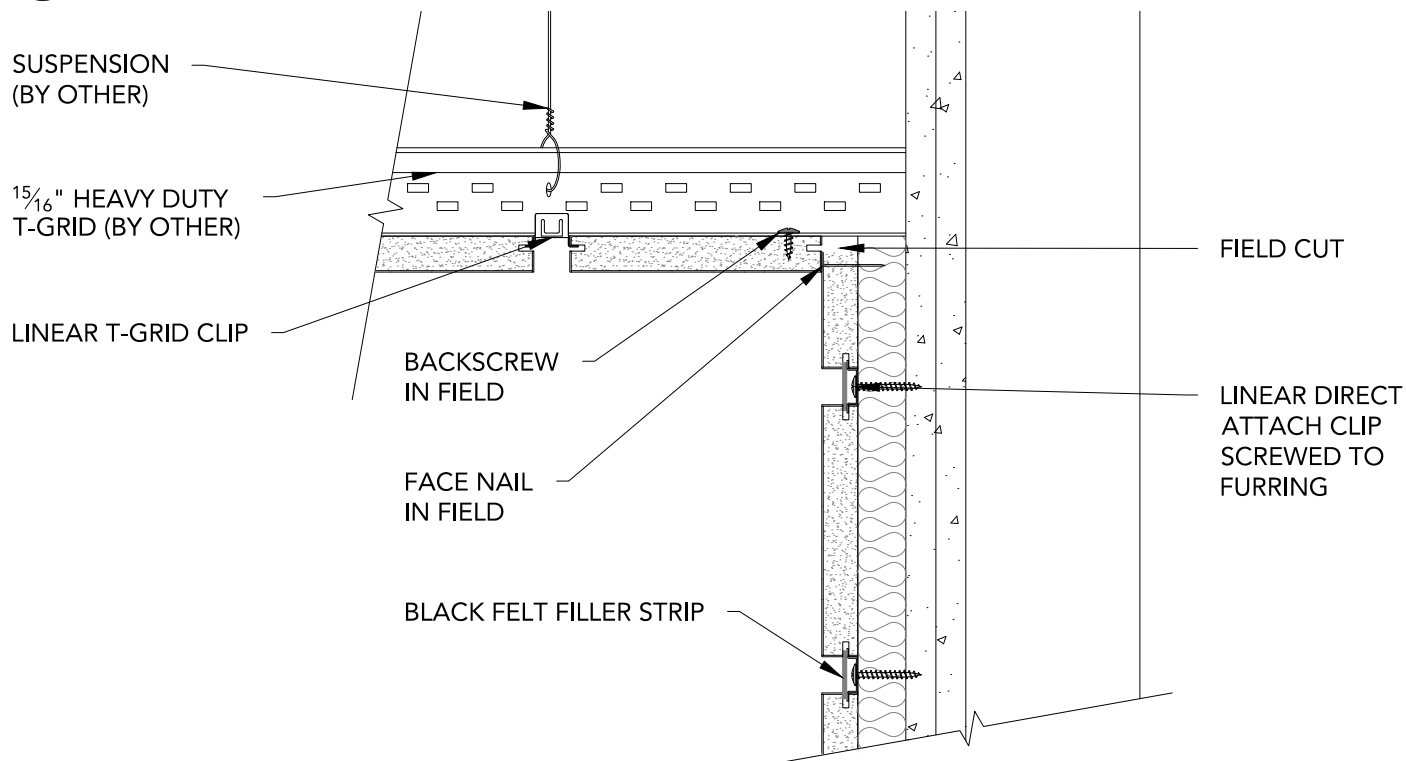
SECTION (WDOCT)

1' = 1'-0"



1 WALL-TO-CEILING TRANSITION (OPTION 1)

3" = 1'-0"



2 WALL-TO-CEILING TRANSITION (OPTION 2)

3" = 1'-0"

15/16" HEAVY DUTY
T-GRID (BY OTHER)

EVERY 6TH PLANK TO BE
BACKSCREWED IN FIELD

LINEAR T-GRID CLIP

FIELD CUT LAP JOINT

FACE NAIL IN FIELD

BLACK FELT FILLER STRIP

SUSPENSION (BY OTHER)

1" ACOUSTICAL BACKER
(2" AVAILABLE)

BACKSCREW IN FIELD

FURRING (BY OTHER) TO
MATCH ACOUSTICAL
BACKER THICKNESS

LINEAR DIRECT ATTACH
CLIP SCREWED TO
FURRING

1

HORIZONTAL WALL-TO-VAULTED CEILING

3" = 1'-0"

15/16" HEAVY DUTY
T-GRID (BY OTHER)

LINEAR T-GRID CLIP

FIELD CUT LAP JOINT

SUSPENSION (BY OTHER)

LINEAR DIRECT ATTACH CLIP
SCREWED TO FURRING

FURRING (BY OTHER) TO
MATCH ACOUSTICAL
BACKER THICKNESS

1" ACOUSTICAL BACKER
ACOUSTICAL BACKER
(2" AVAILABLE)

2

VERTICAL WALL-TO-VAULTED CEILING

3" = 1'-0"

SUSPENSION
(BY OTHER)

LINEAR T-GRID CLIP

EVERY 6TH PLANK TO BE
BACKSCREWED IN FIELD

BACKSCREW IN FIELD

MITER IN FIELD

$\frac{15}{16}$ " HEAVY DUTY
T-GRID (BY OTHER)

BLACK FELT FILLER STRIP

1

HORIZONTAL VAULTED CEILING RETURN

3" = 1'-0"

SUSPENSION
(BY OTHER)

LINEAR T-GRID CLIP

BACKSCREW IN FIELD

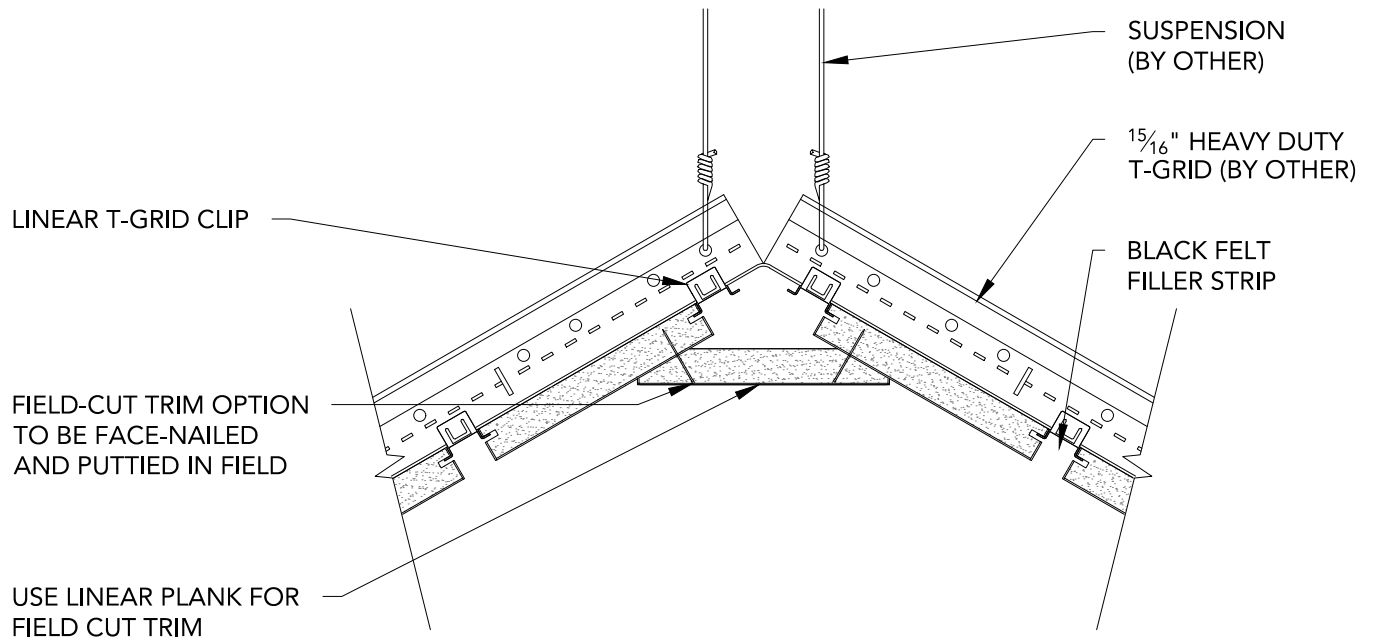
MITER IN FIELD

$\frac{15}{16}$ " HEAVY DUTY
T-GRID (BY OTHER)

2

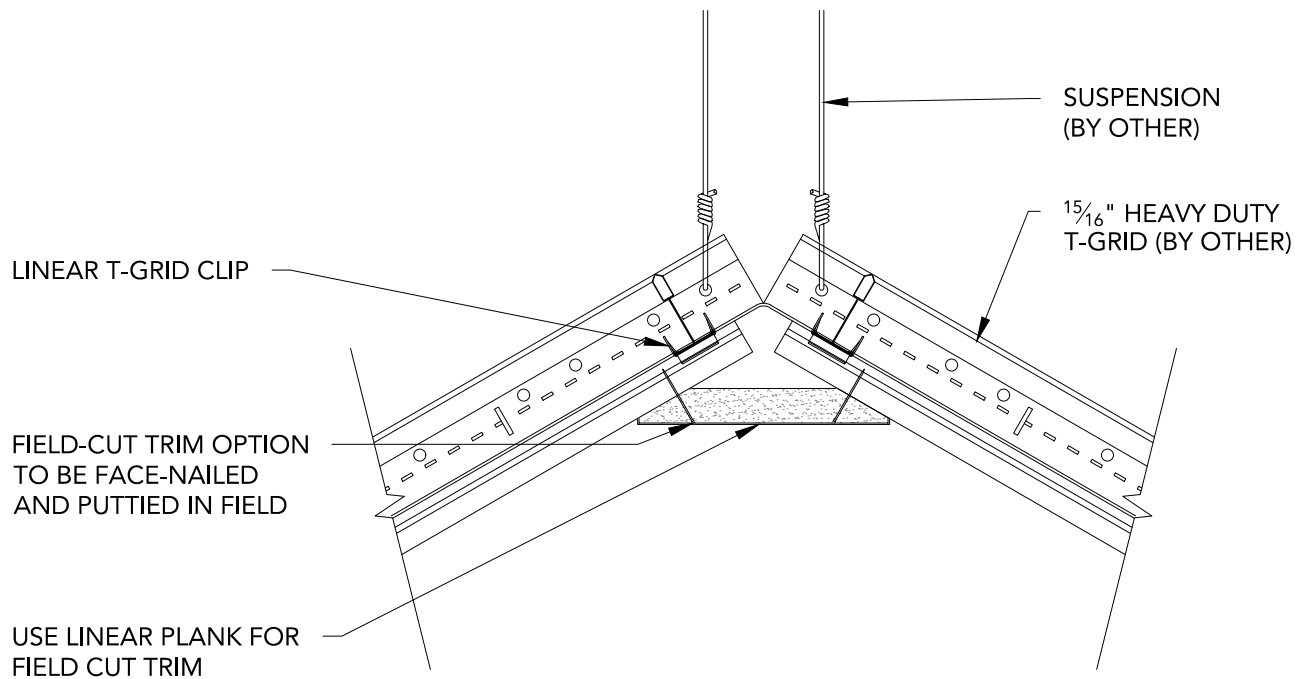
VERTICAL VAULTED CEILING RETURN

3" = 1'-0"



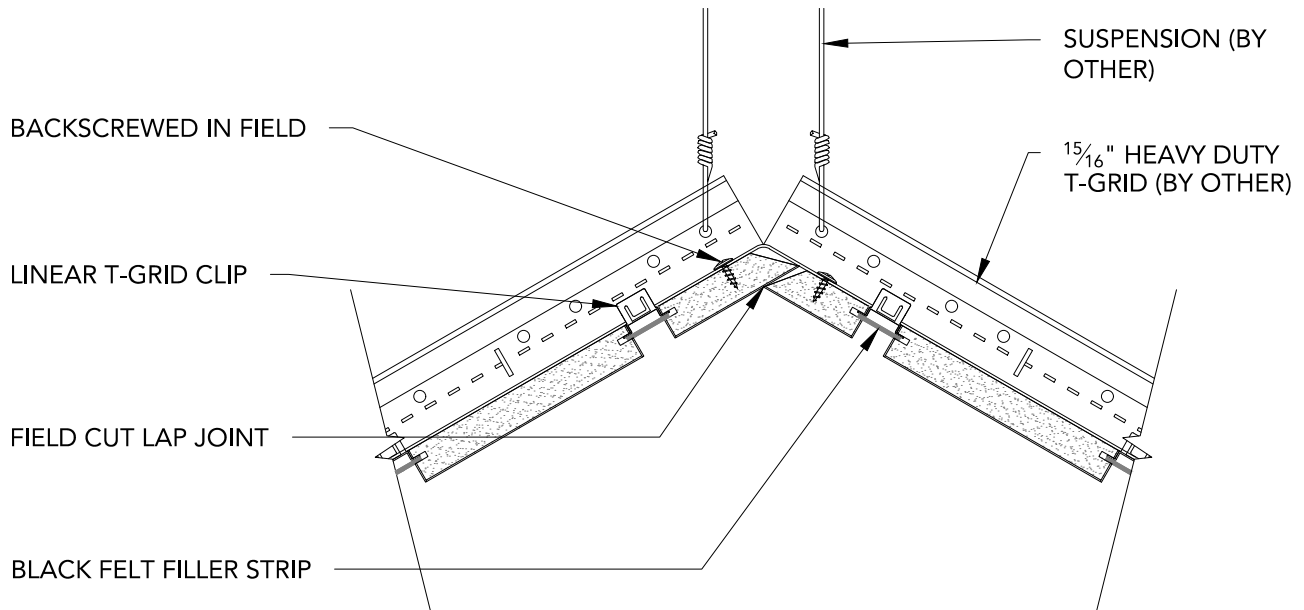
1 HORIZONTAL VAULTED CEILING PEAK

3" = 1'-0"



2 VERTICAL VAULTED CEILING PEAK

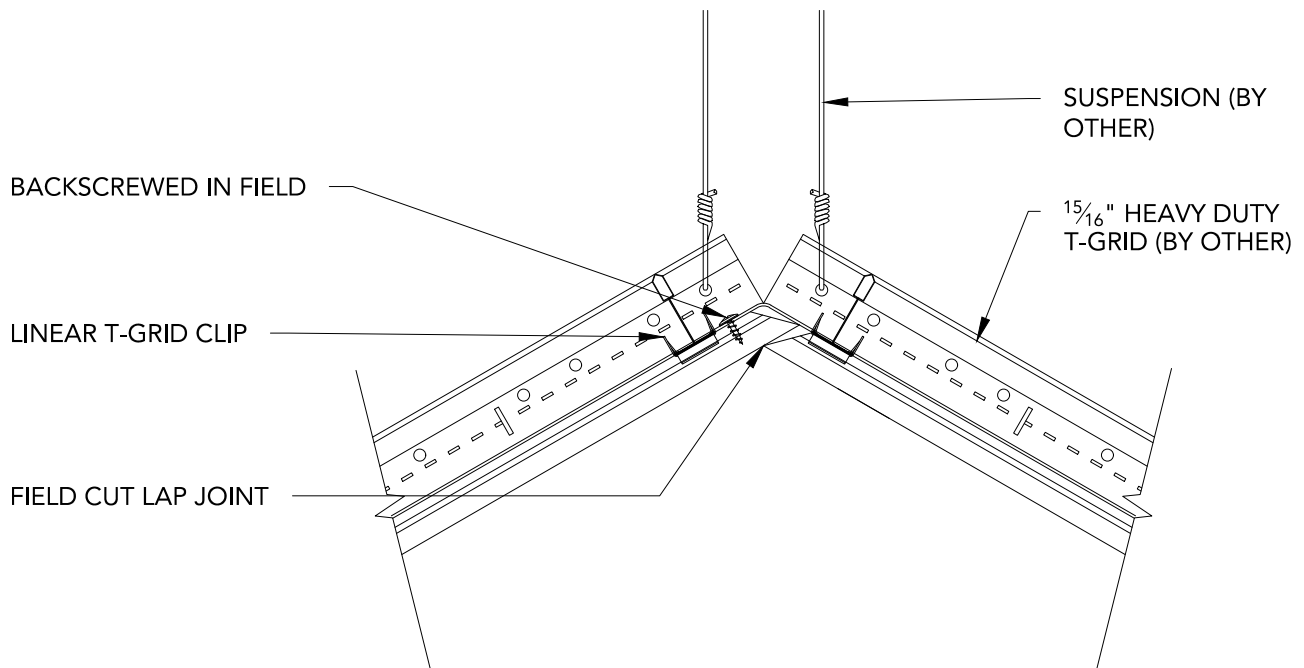
3" = 1'-0"



1

HORIZONTAL VAULTED CEILING PEAK - LAP JOINT

3" = 1'-0"



2

VERTICAL VAULTED CEILING PEAK - LAP JOINT

3" = 1'-0"