



1. Product Name

- PixArt Metal Imaging
- Prisma Metal Finishing

2. Manufacturer

MetalTech-USA
 611 Highway 74 South, Suite 900
 Peachtree City, GA 30269
 Tel: 770-486-8825
 Fax: 770-631-7689
 Email: info@metaltech-usa.com
 Website: www.metaltech-usa.com

3. Product Description

Basic Use

PixArt

PixArt is a metal finishing technique characterized by varying perforations in the material to create a two dimensional pixelated image. Varying size perforations and their placement transmit light to produce highlights and shadows, therefore creating the desired image or design. PixArt mechanically renders realistic images onto architectural grade metals without the use of pigmentation and can be installed both in interior and exterior applications.

Prisma

Prisma is the burnishing of a three-dimensional representation of an image. This technique uses the dispersion of light and reflection on the surface of the metal to create a permanent image. Prisma is suitable for abstract images and patterns selected from standard Prisma patterns or custom designed to meet project requirements. Prisma finishing is mechanically rendered on architectural grade metals without the use of pigmentation and can be installed both in interior and exterior applications.

PixArt and Prisma metal finishes are used for various applications where decorative features are required, including:

- | | |
|------------------|--------------------|
| ■ Wall accents | ■ Signs |
| ■ Enclosures | ■ Displays |
| ■ Screens | ■ Partition panels |
| ■ Ceiling panels | ■ Sunshade panels |
| ■ Fixtures | |



Composition and Materials

PixArt is available on 16–22 gauge MetalTech-USA metals: aluminum, stainless steel, titanium, zinc and copper. Prisma can be used on all MetalTech-USA materials and thicknesses, however, stainless steel is the best material to use.

Color(s), Finish(es)

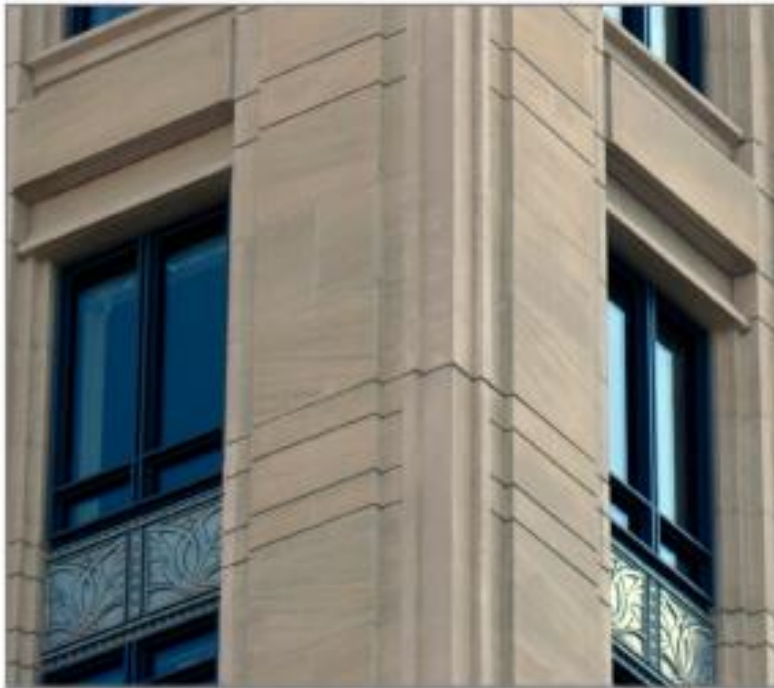
PixArt and Prisma metal finishes are the color of the metal on which they are mechanically rendered. PixArt panels are the same color and finish as the metal panel itself.

No coating is needed for Prisma, as the design is created by removal of the finish. The resultant natural oxidation that occurs thereafter creates the color and surface differentiation. Zinc and copper go through a natural patina process and no coating is necessary.

Benefits

PixArt metal imaging by MetalTech-USA is:

- Permanent, non-fading, non-removable
- Suitable for any image, fine art or mural
- Applicable for interior or exterior installation
- Ventilated through pixel perforations



Prisma metal imaging by MetalTech-USA is:

- Permanent, non-fading, non-removable
- Suitable for any abstract imaging and patterns
- Applicable for interior or exterior installation

Design considerations necessary for successful PixArt projects:

- Overall size
- Number of panels
- Location
- Viewing distance
- Viewing angle
- Light source

Design considerations necessary for successful Prisma projects:

- Overall size
- Number of panels

Sizes:

PixArt : (W × L) 12–48" × 12–120"

Prisma: (W × L) 12–48" × 12–120"

For larger sizes, please consult MetalTech-USA.

PixArt/Prisma is used on standard and custom wall systems.

For multiple panel installations, panels can be connected panel-to-panel or mounted onto an exposed grid or framework.

Options:

Exposed fastening, extrusions, panel edge profiles and stand-alone mounting are available when PixArt and Prisma panels are not installed as standard metal wall panels; as for a mural or other decorative effect. Both PixArt and Prisma can be fabricated with circular or curved perimeters.

Product Limitations

Store zinc and copper products securely away from each other and create no designs that require these two materials come in contact with each other. Assure that rain water runoff from copper surfaces never contacts zinc surfaces.

4. Technical Data

Applicable Standards

- Please refer to MetalTech's SPEC-DATA pertinent to the material and application of the PixArt or Prisma design:

07 41 13 Metal Roof Panels

07 42 13 Metal Wall Panels

07 42 43 Composite Wall Panels

5. Installation

MetalTech-USA will provide customized and appropriate preparation, installation and maintenance instructions on a per-project basis to provide the most accurate and complete documentation.

6. Availability and Cost

Please contact MetalTech-USA for complete availability and pricing information.

7. Warranty

MetalTech-USA offers a two-year workmanship warranty on systems. Materials warranties will differ. Panels that are properly installed on an approved project by a certified installer may be warranted for finish performance to meet specific project requirements.

Complete warranty terms and conditions are available from MetalTech-USA upon request.

Please contact MetalTech-USA for warranty requirements.

Table 1—Decorative Metal Patterns
PixArt metal imaging by MetalTech-USA, Illustrations

Abraham Lincoln, original image



Abraham Lincoln, PixArt image



8. Maintenance Instructions

Decorative metals manufactured by MetalTech-USA are normally maintenance free; however, an annual inspection is recommended to verify proper drainage, integrity of flashing and sealants and overall condition of roof system.

MetalTech-USA provides standard, appropriate preparation, installation and maintenance instructions on a per-project basis to provide the most accurate and complete documentation.



9. Technical Services

MetalTech-USA offers technical assistance for application issues and maintains a team of factory trained installation professionals. Detailed information, product literature, test results, project lists, assistance preparing project specifications and arrangements for installation supervision are available by contacting MetalTech.

Project-specific engineering reports, shop drawings, tool rental/purchase and site inspections available from MetalTech.

10. Filing Systems

- MANU-SPEC®
- Additional product information is available from MetalTech-USA upon request