



Adeka

Panel Dims:		15.5" x 15.5"	Panels per box:		24 panels
On Center:	Vertical	16 1/16"	Coverage:	Per panel	1.22 sq ft
	Horizontal	22 1/16"		Per crate	29.28 sq ft
Radius:	Convex:	Concave:	Thickness:		0.65mm
Min slope:	33' Field	NA	Weight:	Per Panel	1.7 lb
		3:12		Per Box	42 lb

TECHNICAL SHEET



Umicore Building Products USA, Inc.
 3600 Glenwood Ave – Suite 250
 Raleigh, NC 27612
 (919) 874-7173 O.
 (919) 874-7140 F.

Scale:

NTS

Date:

04/30/2012

Drawn By:

LDL

For general information e-mail:
 info@vmzinc-us.com

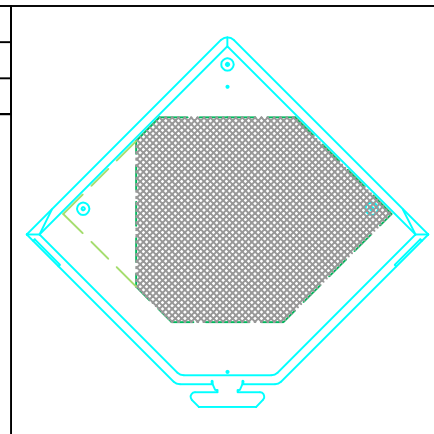
SYSTEM:

Adeka-R

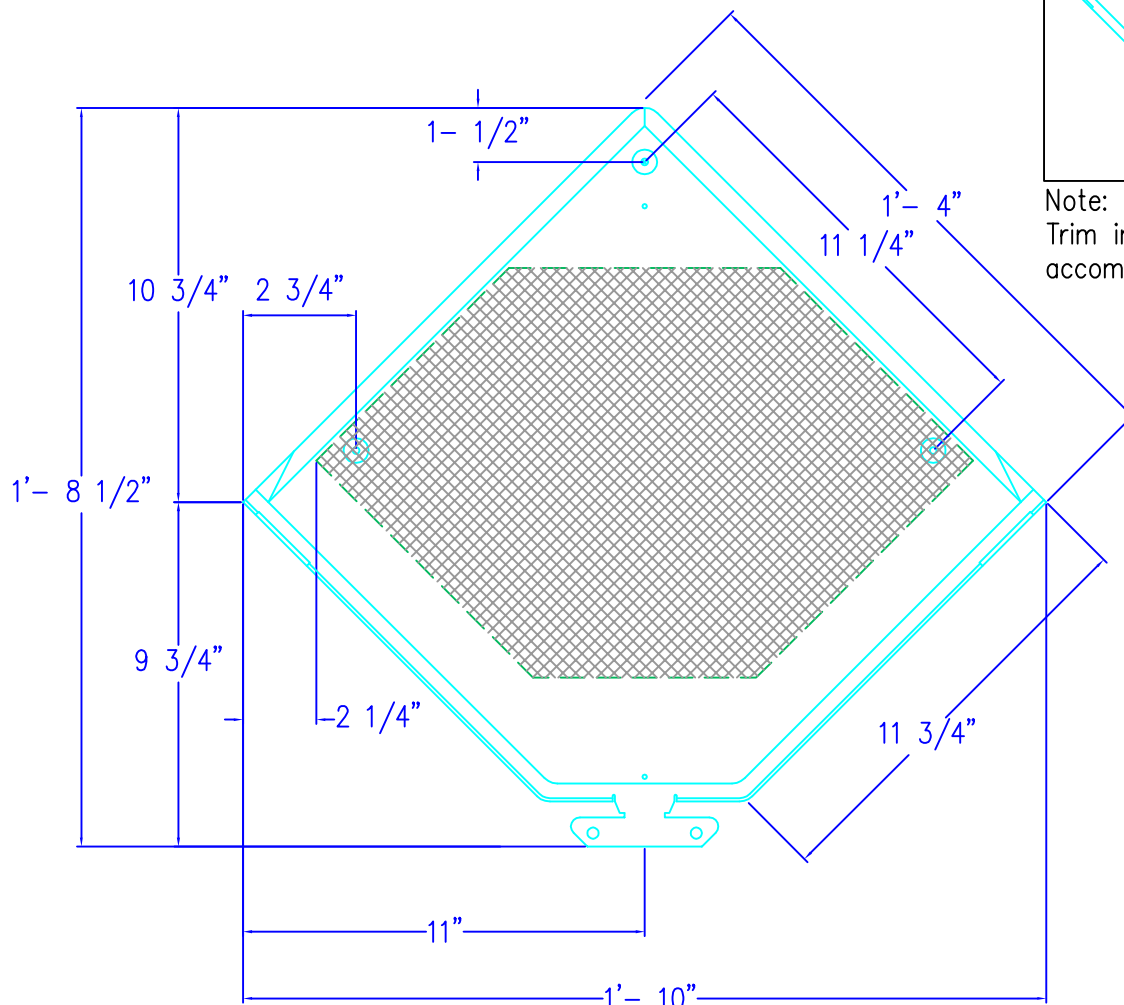
DRAWING:

0000

	Single	Box (24)
Coverage ft ² :	1.26 ft ²	30.24 ft ²
Weight:	1.75 lb	42 lb



Note:
Trim insulation as needed to
accommodate clips, flashings, etc.



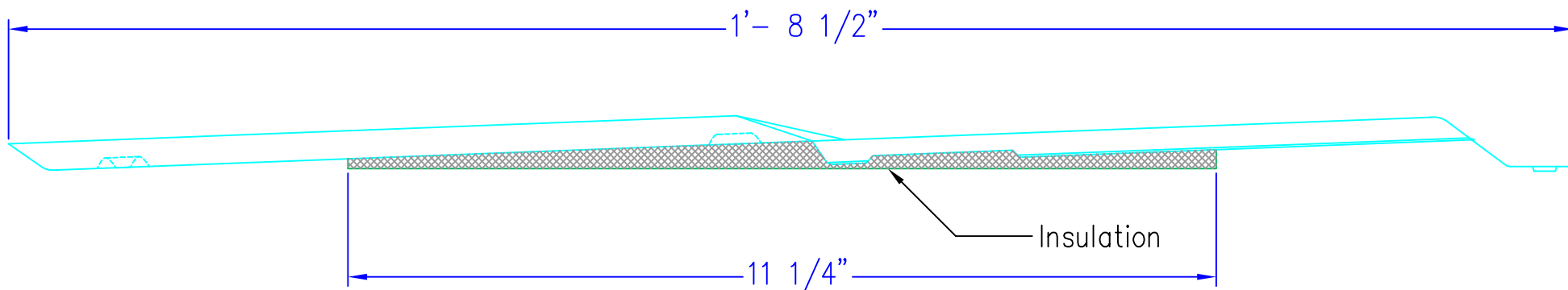
ADEKA SHINGLE



Umicore Building Products USA, Inc.
3600 Glenwood Ave – Suite 250
Raleigh, NC 27612
(919) 874-7173 O.
(919) 874-7140 F.

Scale: NTS
Date: 04/30/2012
Drawn By: LDL
For general information e-mail:
info@vmzinc-us.com

SYSTEM:
Adeka-R
DRAWING:
1000



SHINGLE – PROFILE



Umicore Building Products USA, Inc.
3600 Glenwood Ave – Suite 250
Raleigh, NC 27612
(919) 874-7173 O.
(919) 874-7140 F.

Scale: NTS
Date: 04/30/2012
Drawn By: LDL
For general information e-mail:
info@vmzinc-us.com

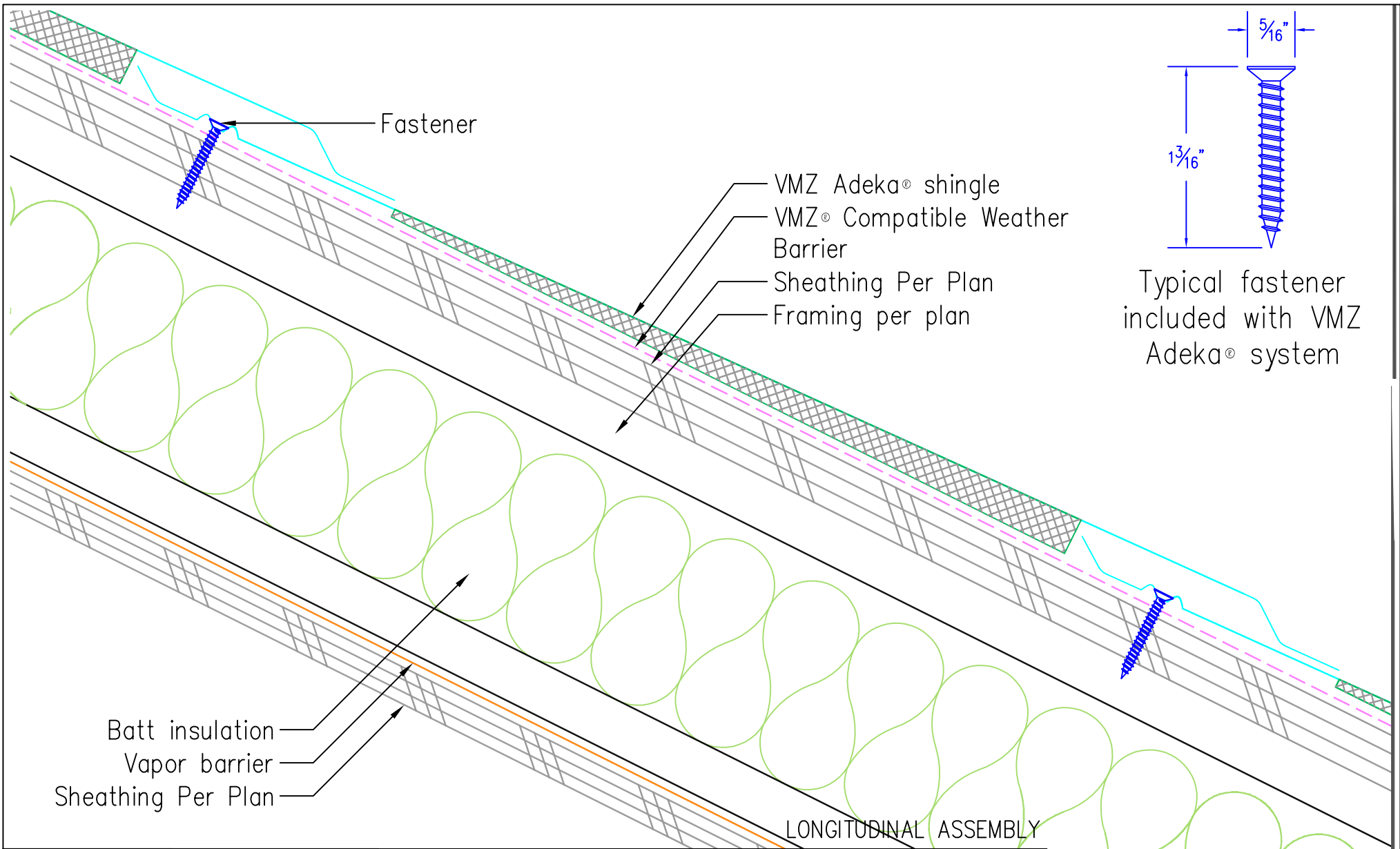
SYSTEM:
Adeka-R
DRAWING:
1001

www.vmzinc-us.com

NOT A SHOP DRAWING

FOR ILLUSTRATION ONLY

While all technical information and suggestions herein are believed to be reliable and accurate, nothing stated herein is to be taken as a warranty, expressed or implied. Responsibility for review remains solely with the design authority or other authority.



Umicore Building Products USA, Inc.
3600 Glenwood Ave - Suite 250
Raleigh, NC 27612
(919) 874-7173 O.
(919) 874-7140 F.

Scale:
6" = 1' - 0"

Date:
04/30/2012

Drawn By:
LDL

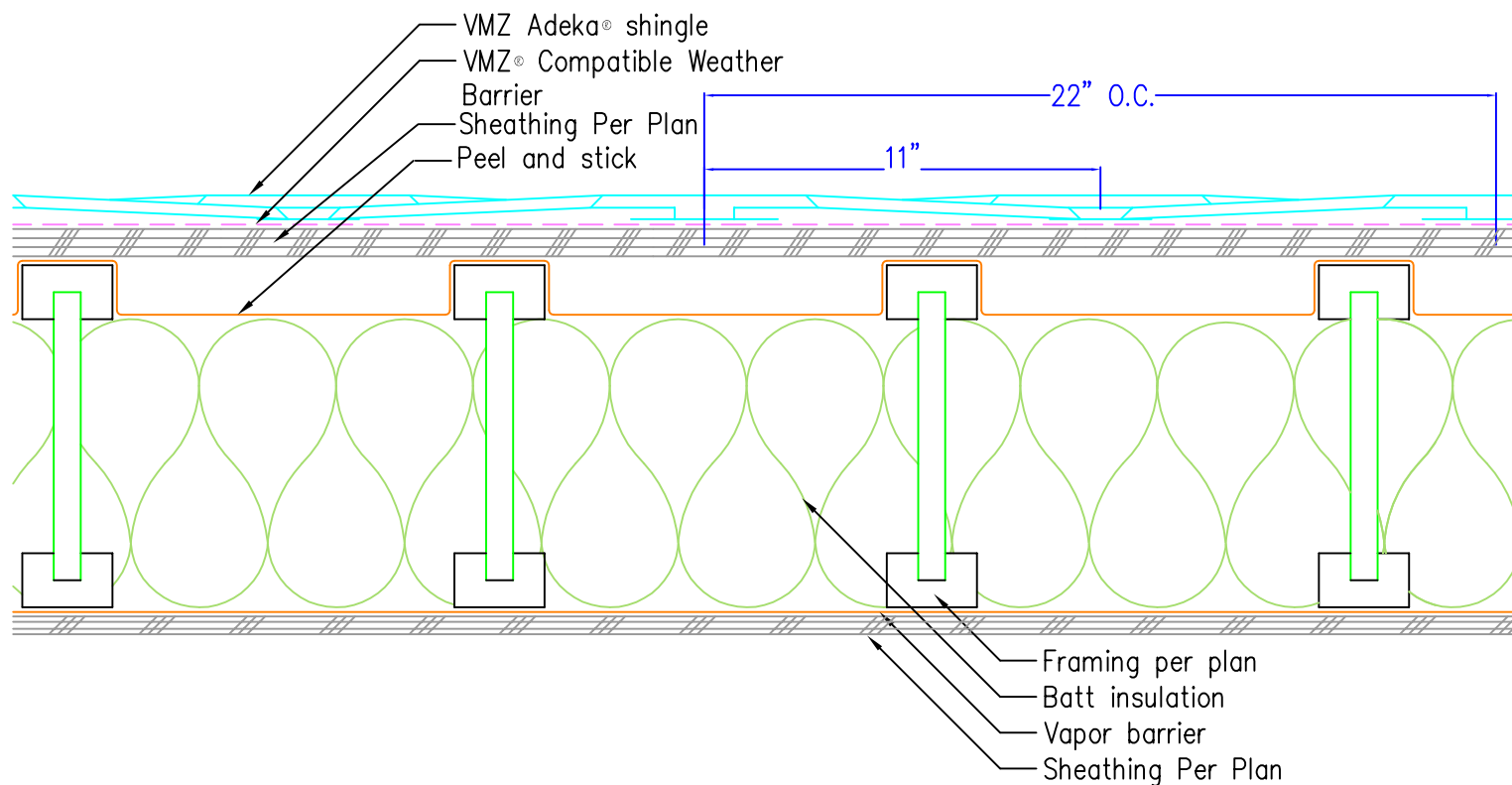
For general information e-mail:
info@vmzinc-us.com

SYSTEM:

Adeka-R

DRAWING:

1003



Note:
 If slope is less than 3:12 lap Zinc
 Plus Underlay on 12" and seal,
 apply self adhering membrane
 flashing at perimeter and valleys.

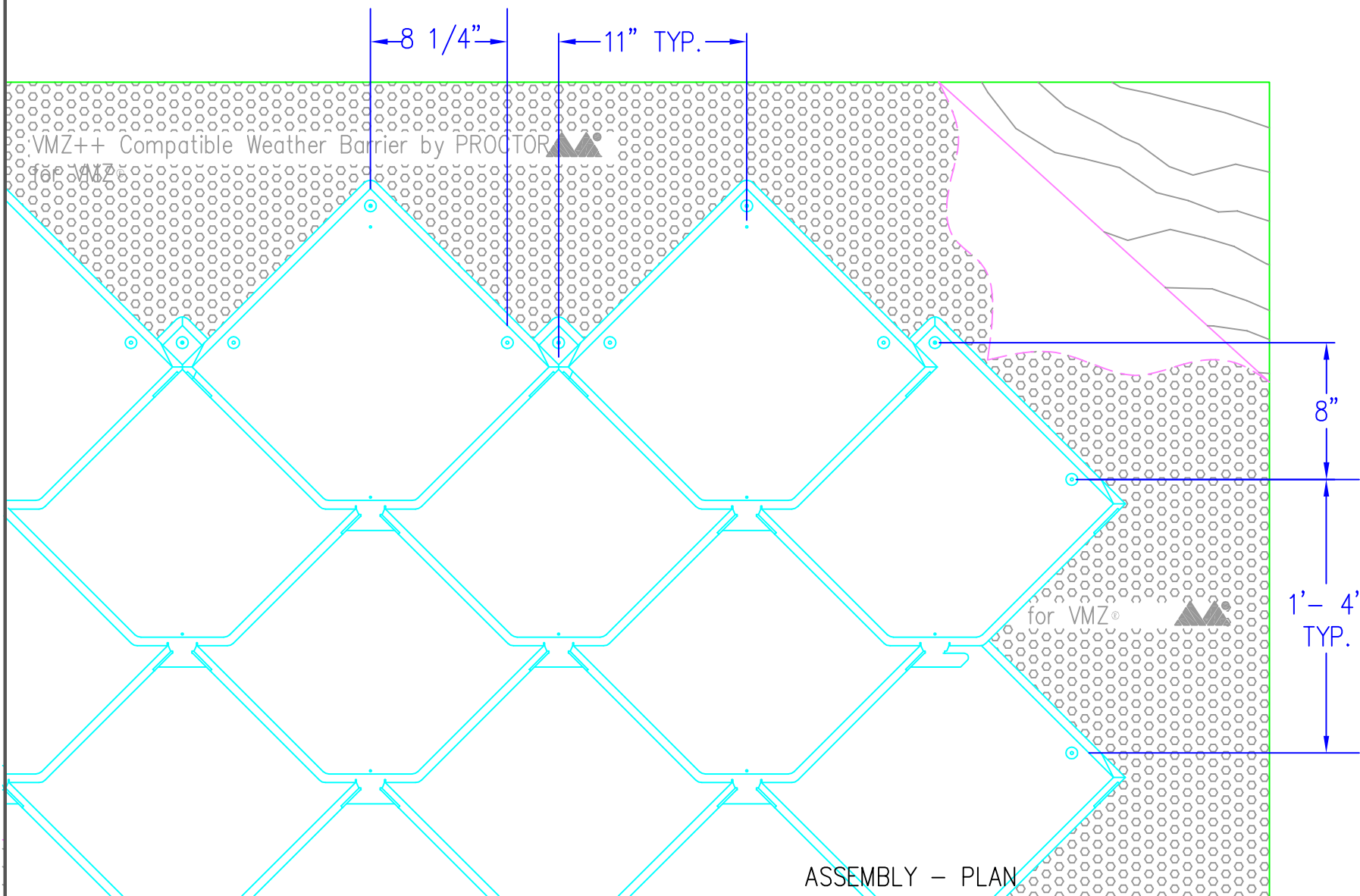
CLIP LAYOUT #3



Umicore Building Products USA, Inc.
 3600 Glenwood Ave - Suite 250
 Raleigh, NC 27612
 (919) 874-7173 O.
 (919) 874-7140 F.

Scale: NTS
 Date: 04/30/2012
 Drawn By: LDL
 For general information e-mail:
 info@vmzinc-us.com

SYSTEM:
 Adeka-R
 DRAWING:
 1004



Umicore Building Products USA, Inc.
3600 Glenwood Ave - Suite 250
Raleigh, NC 27612
(919) 874-7173 O.
(919) 874-7140 F.

Scale:

NTS

Date:

04/30/2012

Drawn By:

LDL

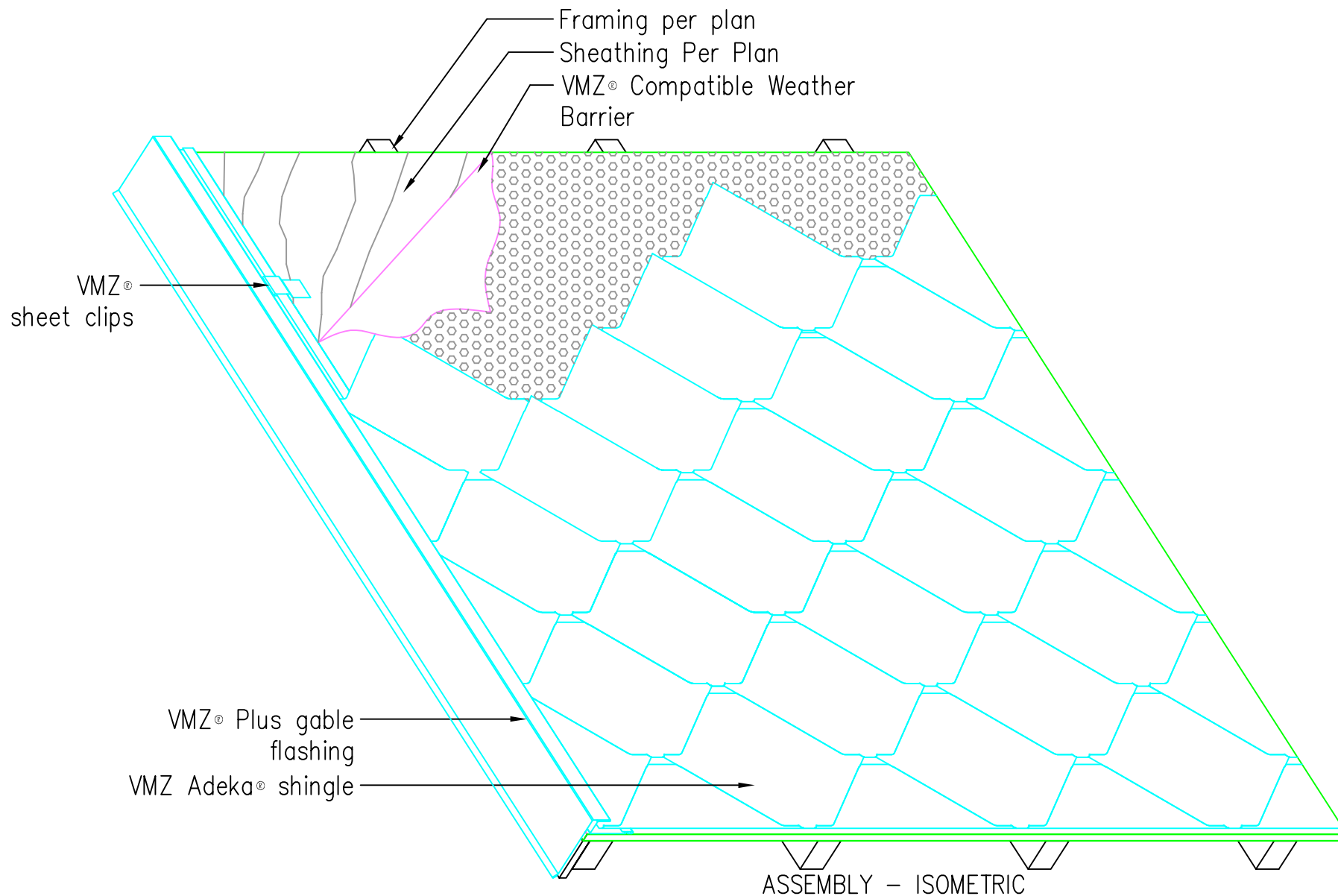
For general information e-mail:
info@vmzinc-us.com

SYSTEM:

Adeka-R

DRAWING:

1005



Umicore Building Products USA, Inc.
 3600 Glenwood Ave - Suite 250
 Raleigh, NC 27612
 (919) 874-7173 O.
 (919) 874-7140 F.

Scale:

NTS

Date:

04/30/2012

Drawn By:

LDL

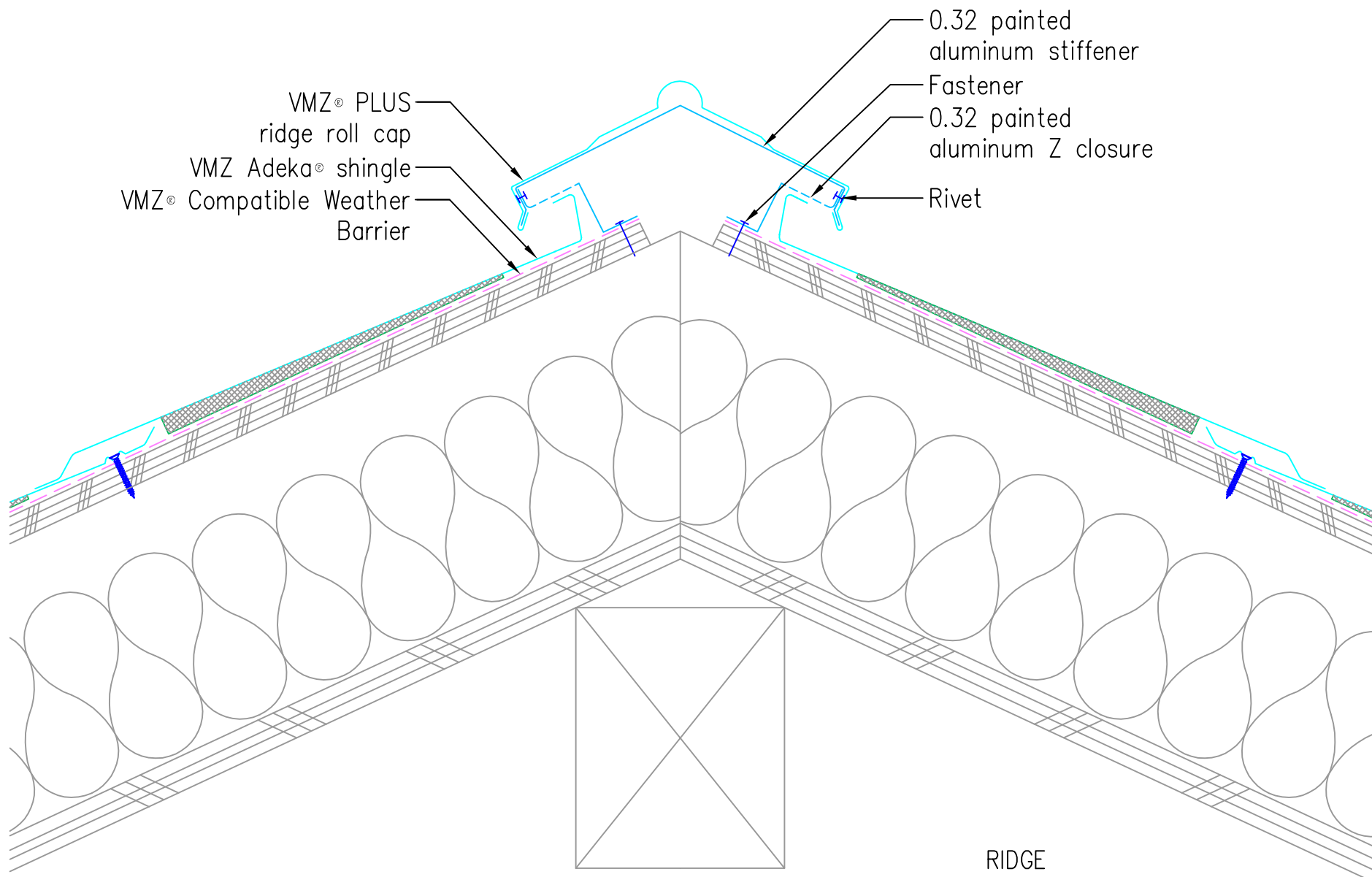
For general information e-mail:
info@vmzinc-us.com

SYSTEM:

Adeka-R

DRAWING:

1006



Umicore Building Products USA, Inc.
3600 Glenwood Ave - Suite 250
Raleigh, NC 27612
(919) 874-7173 O.
(919) 874-7140 F.

Scale:

NTS

Date:

04/30/2012

Drawn By:

LDL

For general information e-mail:
info@vmzinc-us.com

SYSTEM:

Adeka-R

DRAWING:

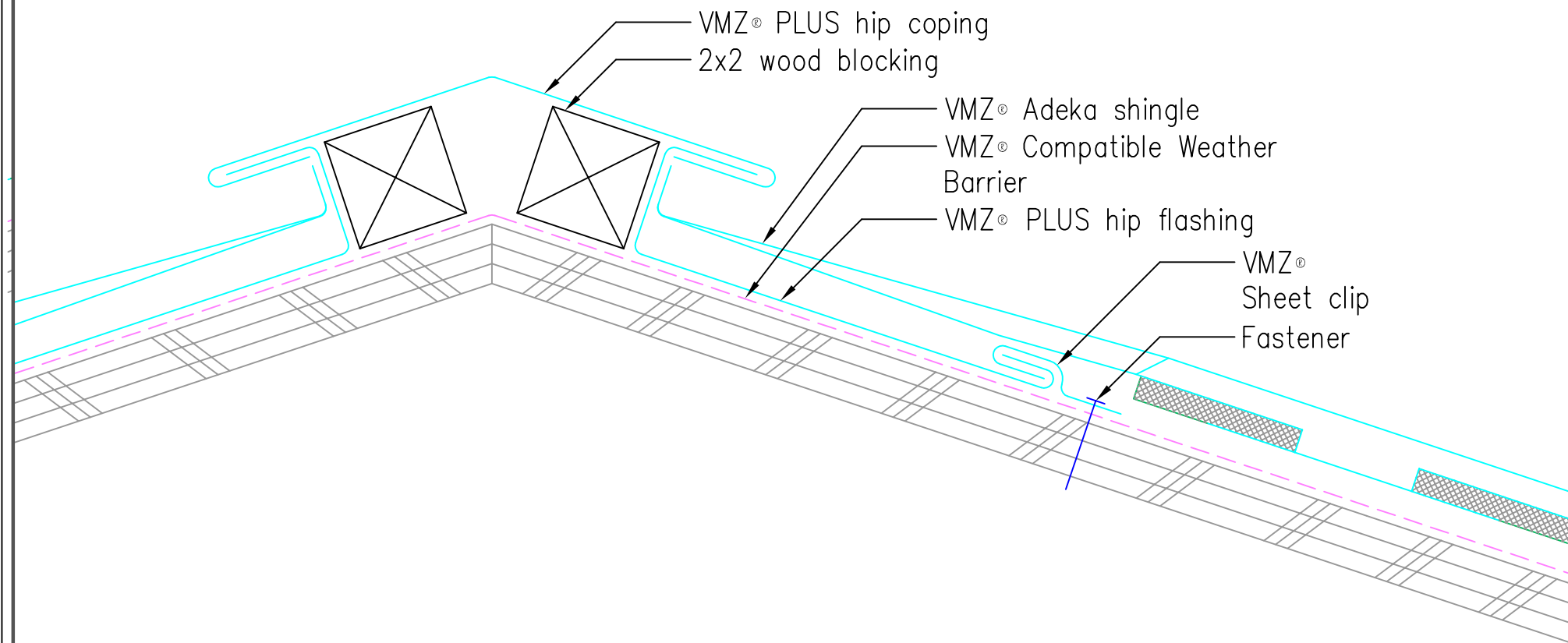
1100

www.vmzinc-us.com

NOT A SHOP DRAWING

FOR ILLUSTRATION ONLY

While all technical information and suggestions herein are believed to be reliable and accurate, nothing stated herein is to be taken as a warranty, expressed or implied. Responsibility for review remains solely with the design authority or other authority.



HIP



Umicore Building Products USA, Inc.
 3600 Glenwood Ave - Suite 250
 Raleigh, NC 27612
 (919) 874-7173 O.
 (919) 874-7140 F.

Scale:
 6" = 1' - 0"

Date:
 04/30/2012

Drawn By:
 LDL

For general information e-mail:
 info@vmzinc-us.com

SYSTEM:

Adeka-R

DRAWING:

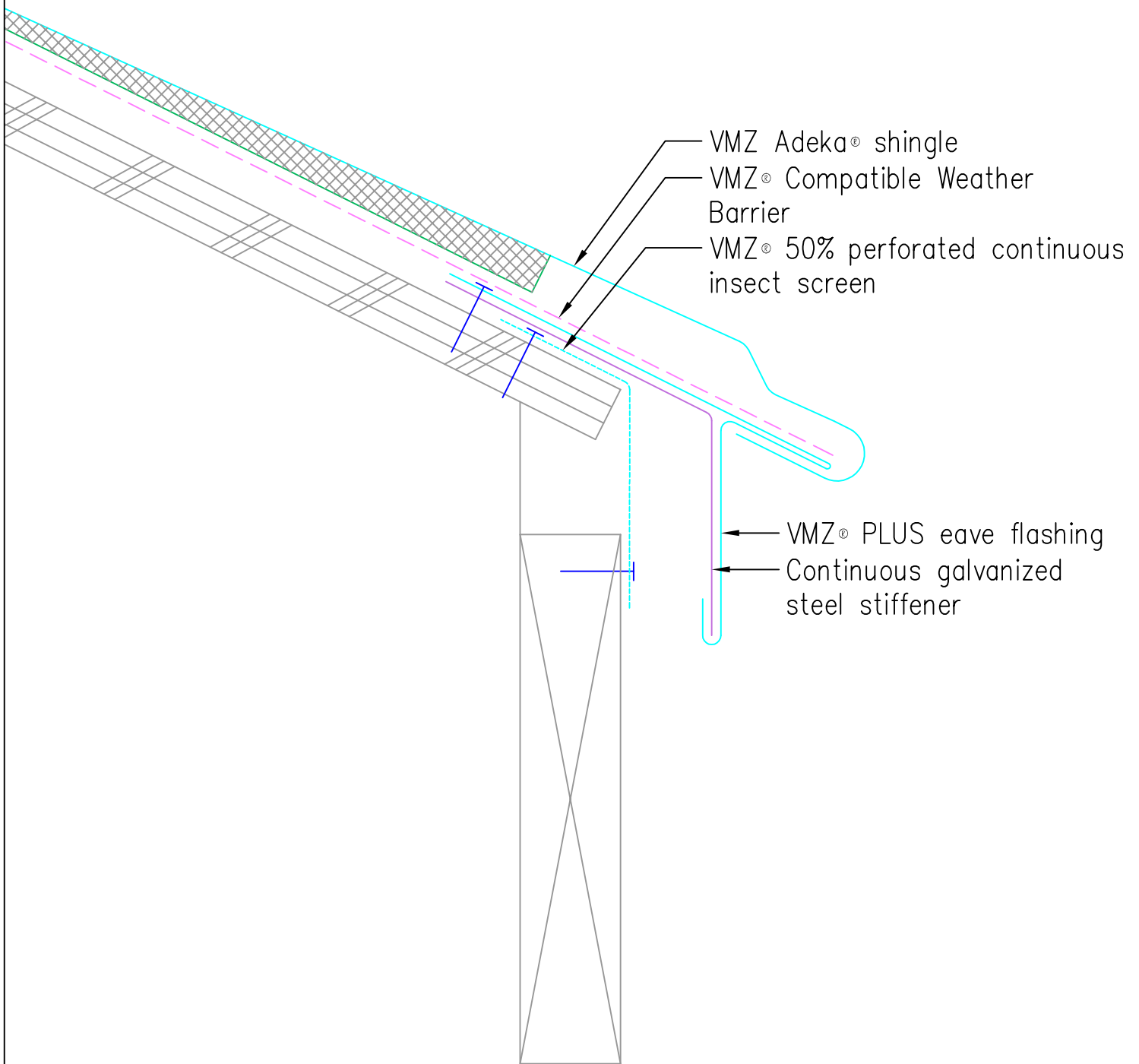
1120

www.vmzinc-us.com

NOT A SHOP DRAWING

FOR ILLUSTRATION ONLY

While all technical information and suggestions herein are believed to be reliable and accurate, nothing stated herein is to be taken as a warranty, expressed or implied. Responsibility for review remains solely with the design authority or other authority.



EAVE #1



Umicore Building Products USA, Inc.
3600 Glenwood Ave – Suite 250
Raleigh, NC 27612
(919) 874-7173 O.
(919) 874-7140 F.

Scale:

6" = 1' - 0"

Date:

04/30/2012

Drawn By:

LDL

For general information e-mail:
info@vmzinc-us.com

SYSTEM:

Adeka-R

DRAWING:

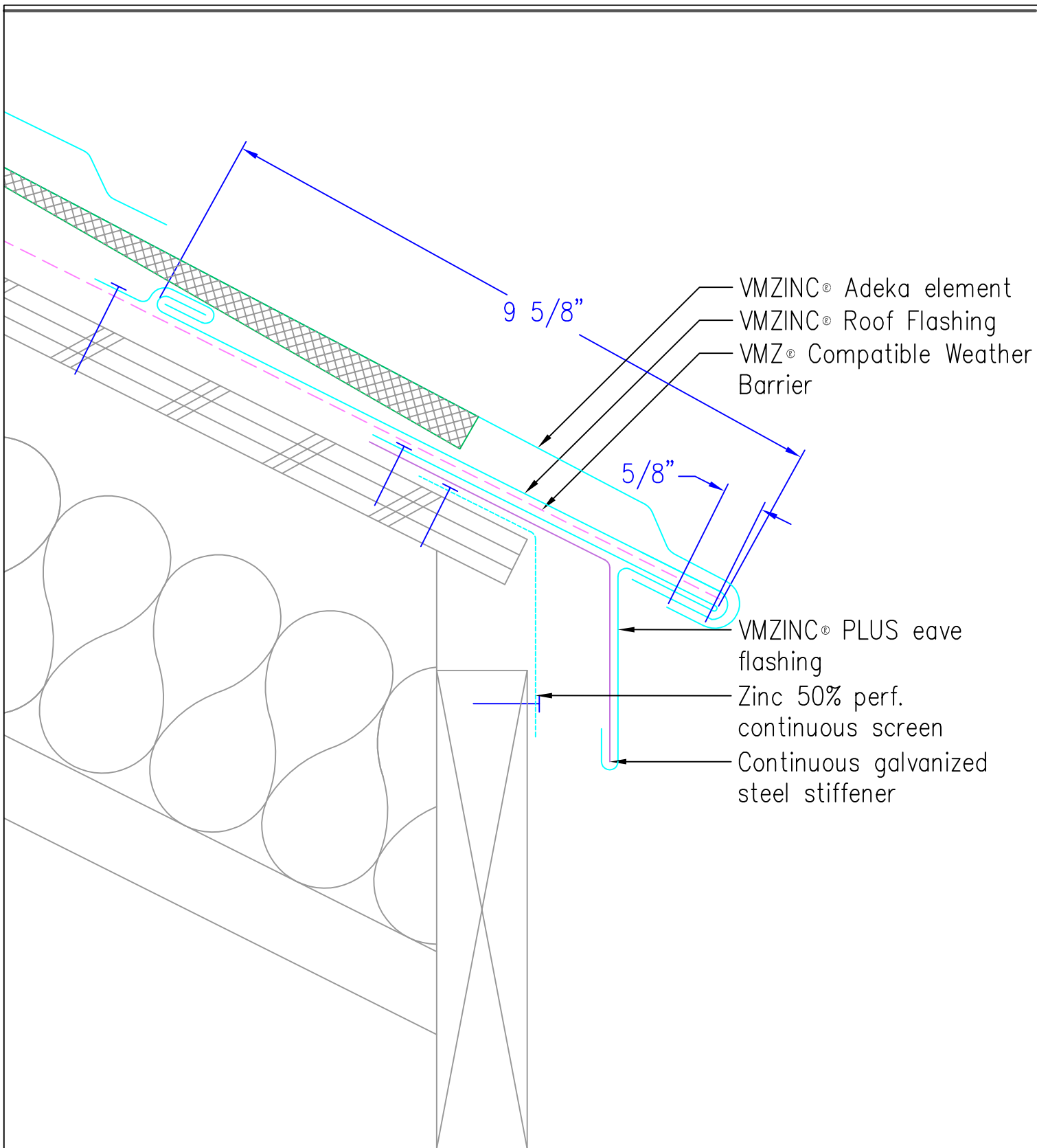
1200

www.vmzinc-us.com

NOT A SHOP DRAWING

FOR ILLUSTRATION ONLY

While all technical information and suggestions herein are believed to be reliable and accurate, nothing stated herein is to be taken as a warranty, expressed or implied. Responsibility for review remains solely with the design authority or other authority.



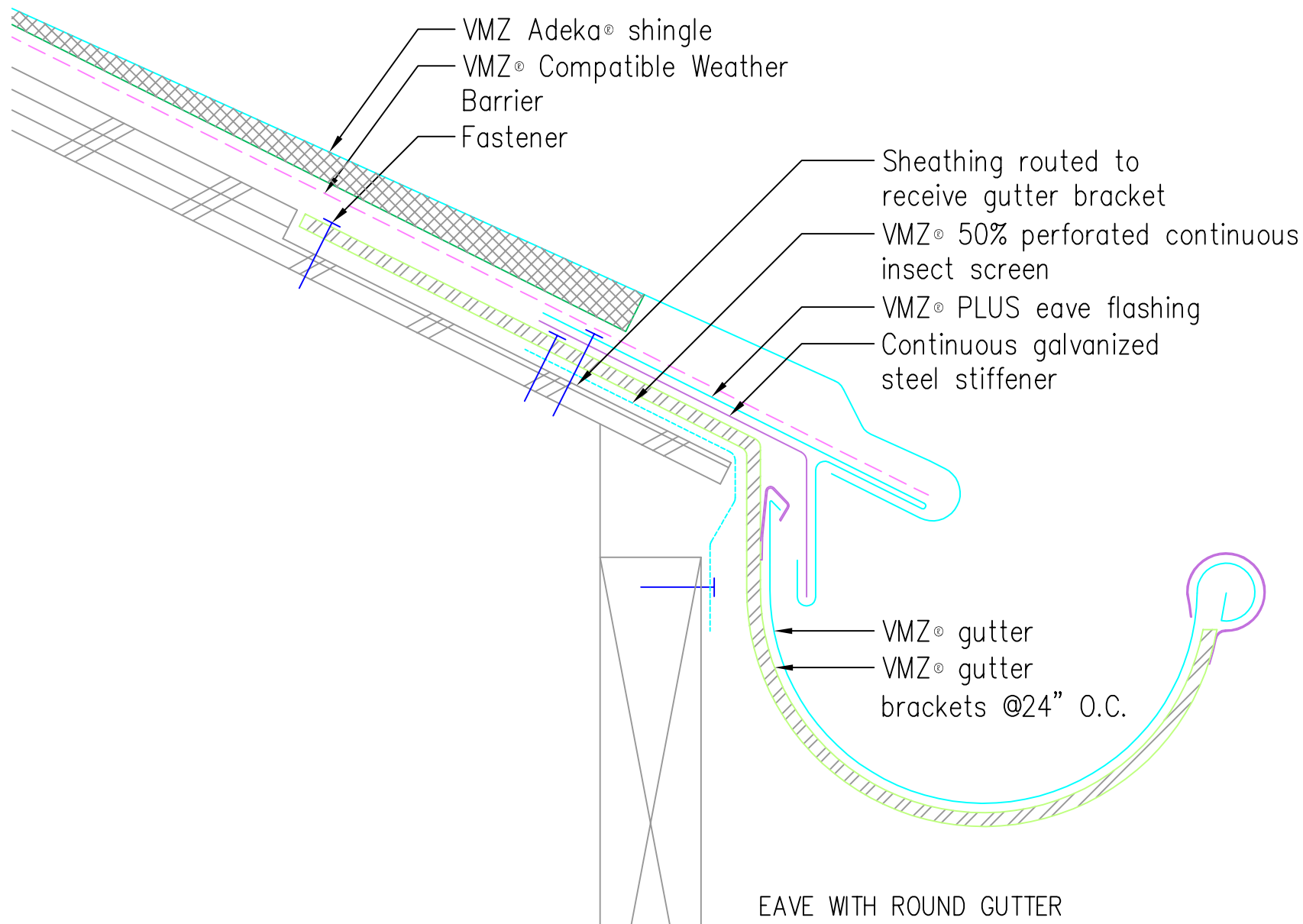
EAVE #2



Umicore Building Products USA, Inc.
 3600 Glenwood Ave – Suite 250
 Raleigh, NC 27612
 (919) 874-7173 O.
 (919) 874-7140 F.

Scale: 6" = 1' - 0"
 Date: 04/30/2012
 Drawn By: LDL
 For general information e-mail: info@vmzinc-us.com

SYSTEM:
 Adeka-R
 DRAWING:
 1201



Umicore Building Products USA, Inc.
 3600 Glenwood Ave - Suite 250
 Raleigh, NC 27612
 (919) 874-7173 O.
 (919) 874-7140 F.

Scale:

6" = 1' - 0"

Date:

04/30/2012

Drawn By:

LDL

For general information e-mail:
 info@vmzinc-us.com

SYSTEM:

Adeka-R

DRAWING:

1210

Fastener
 VMZ Adeka® shingle
 VMZ® sheet clip
 VMZ® Compatible Weather
 Barrier

Solder
 VMZ® continuous
 soldered cleat
 VMZ® PLUS valley
 flashing

VALLEY



Umicore Building Products USA, Inc.
 3600 Glenwood Ave - Suite 250
 Raleigh, NC 27612
 (919) 874-7173 O.
 (919) 874-7140 F.

Scale:
 6" = 1' - 0"

Date:
 04/30/2012

Drawn By:
 LDL

For general information e-mail:
 info@vmzinc-us.com

SYSTEM:

Adeka-R

DRAWING:

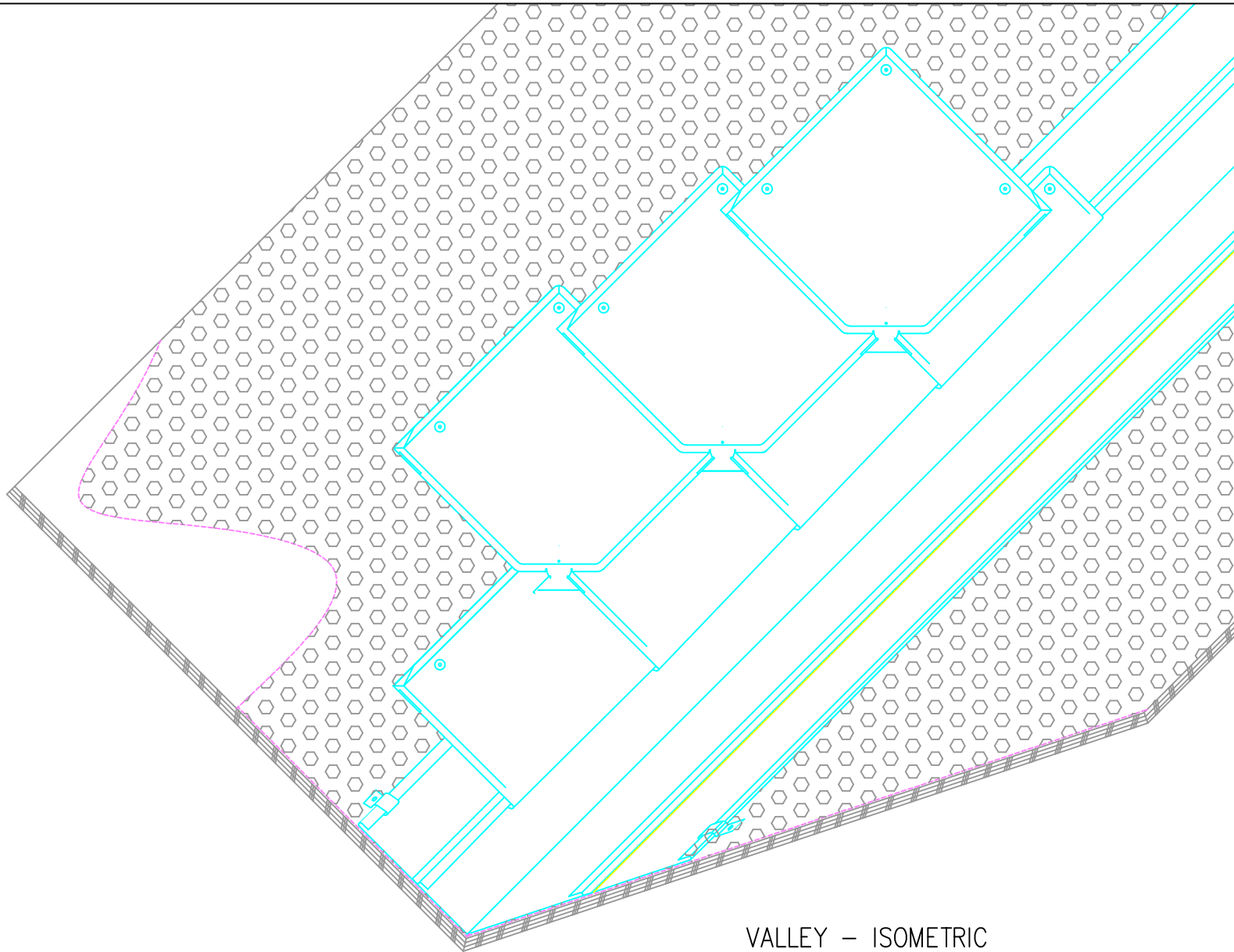
1300

www.vmzinc-us.com

NOT A SHOP DRAWING

FOR ILLUSTRATION ONLY

While all technical information and suggestions herein are believed to be reliable and accurate, nothing stated herein is to be taken as a warranty, expressed or implied. Responsibility for review remains solely with the design authority or other authority.



VALLEY – ISOMETRIC



Umicore Building Products USA, Inc.
3600 Glenwood Ave – Suite 250
Raleigh, NC 27612
(919) 874-7173 O.
(919) 874-7140 F.

Scale:

NTS

Date:

04/30/2012

Drawn By:

LDL

For general information e-mail:
info@vmzinc-us.com

SYSTEM:

Adeka-R

DRAWING:

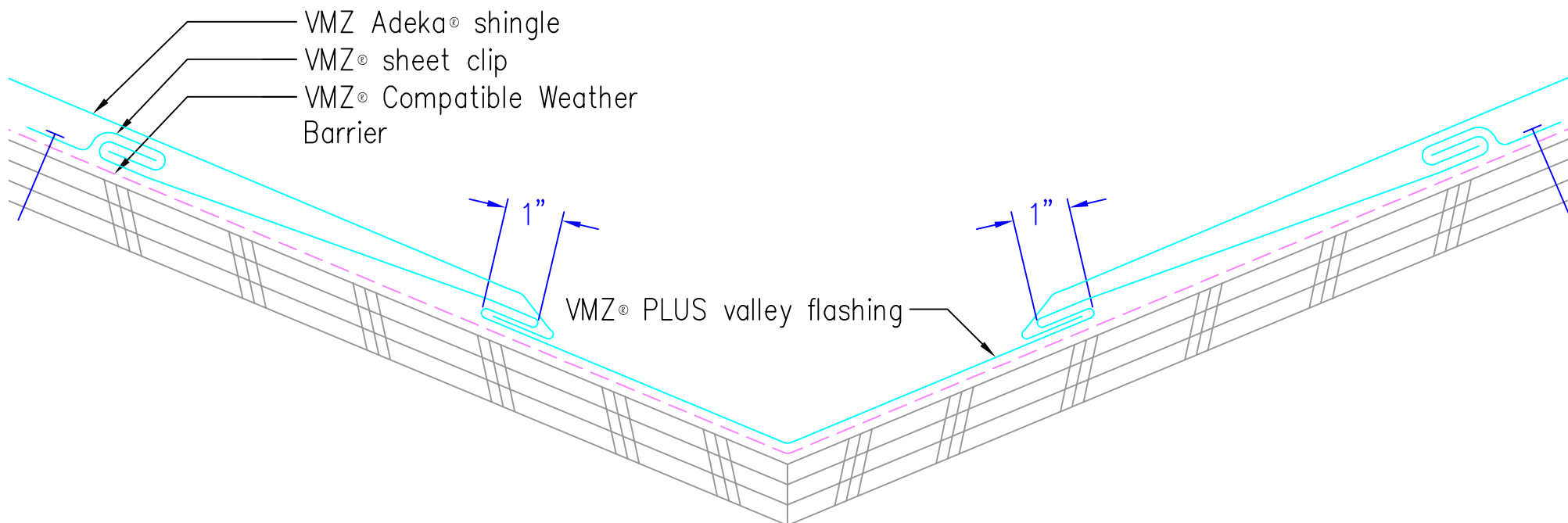
1301

www.vmzinc-us.com

NOT A SHOP DRAWING

FOR ILLUSTRATION ONLY

While all technical information and suggestions herein are believed to be reliable and accurate, nothing stated herein is to be taken as a warranty, expressed or implied. Responsibility for review remains solely with the design authority or other authority.



The VMZ® Valley flashing must be tapered

VALLEY



Umicore Building Products USA, Inc.
3600 Glenwood Ave – Suite 250
Raleigh, NC 27612
(919) 874-7173 O.
(919) 874-7140 F.

Scale:

6" = 1' - 0"

Date:

04/30/2012

Drawn By:

LDL

For general information e-mail:
info@vmzinc-us.com

SYSTEM:

Adeka-R

DRAWING:

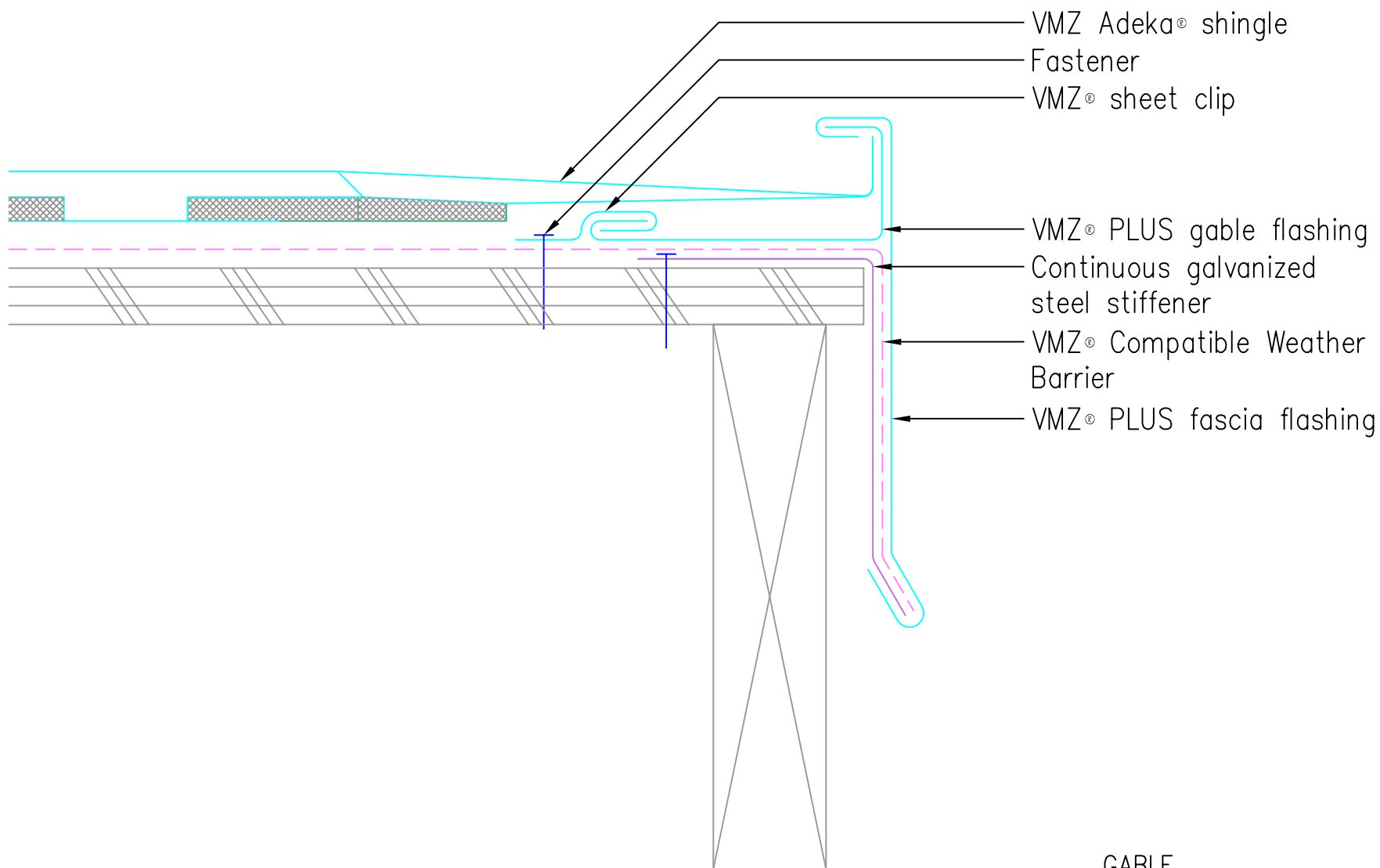
1302

www.vmzinc-us.com

NOT A SHOP DRAWING

FOR ILLUSTRATION ONLY

While all technical information and suggestions herein are believed to be reliable and accurate, nothing stated herein is to be taken as a warranty, expressed or implied. Responsibility for review remains solely with the design authority or other authority.



Umicore Building Products USA, Inc.
3600 Glenwood Ave - Suite 250
Raleigh, NC 27612
(919) 874-7173 O.
(919) 874-7140 F.

Scale:
6" = 1' - 0"

Date:
04/30/2012

Drawn By:
LDL

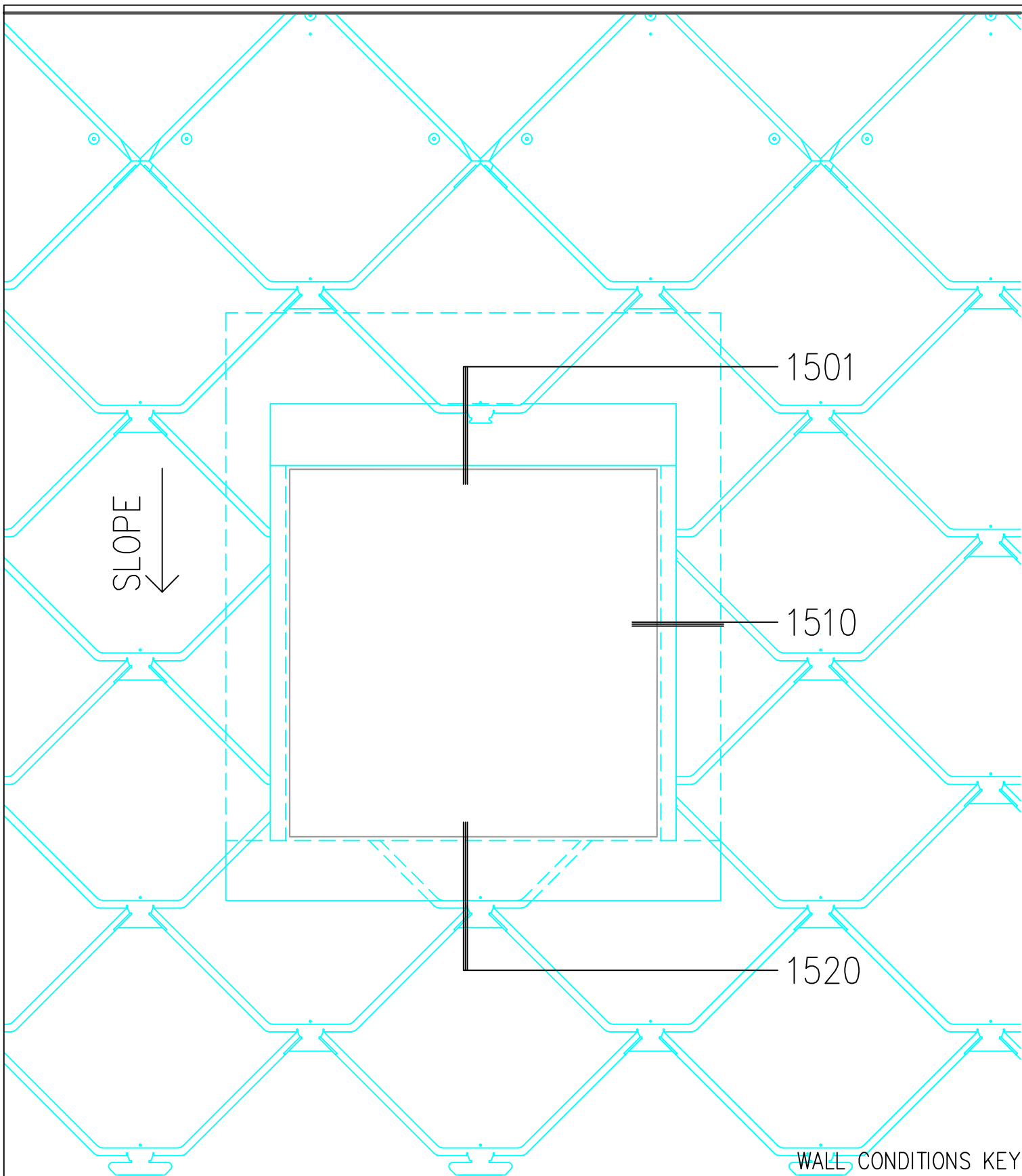
For general information e-mail:
info@vmzinc-us.com

SYSTEM:

Adeka-R

DRAWING:

1400



WALL CONDITIONS KEY



Umicore Building Products USA, Inc.
3600 Glenwood Ave – Suite 250
Raleigh, NC 27612
(919) 874-7173 O.
(919) 874-7140 F.

Scale:

NTS

Date:

04/30/2012

Drawn By:

LDL

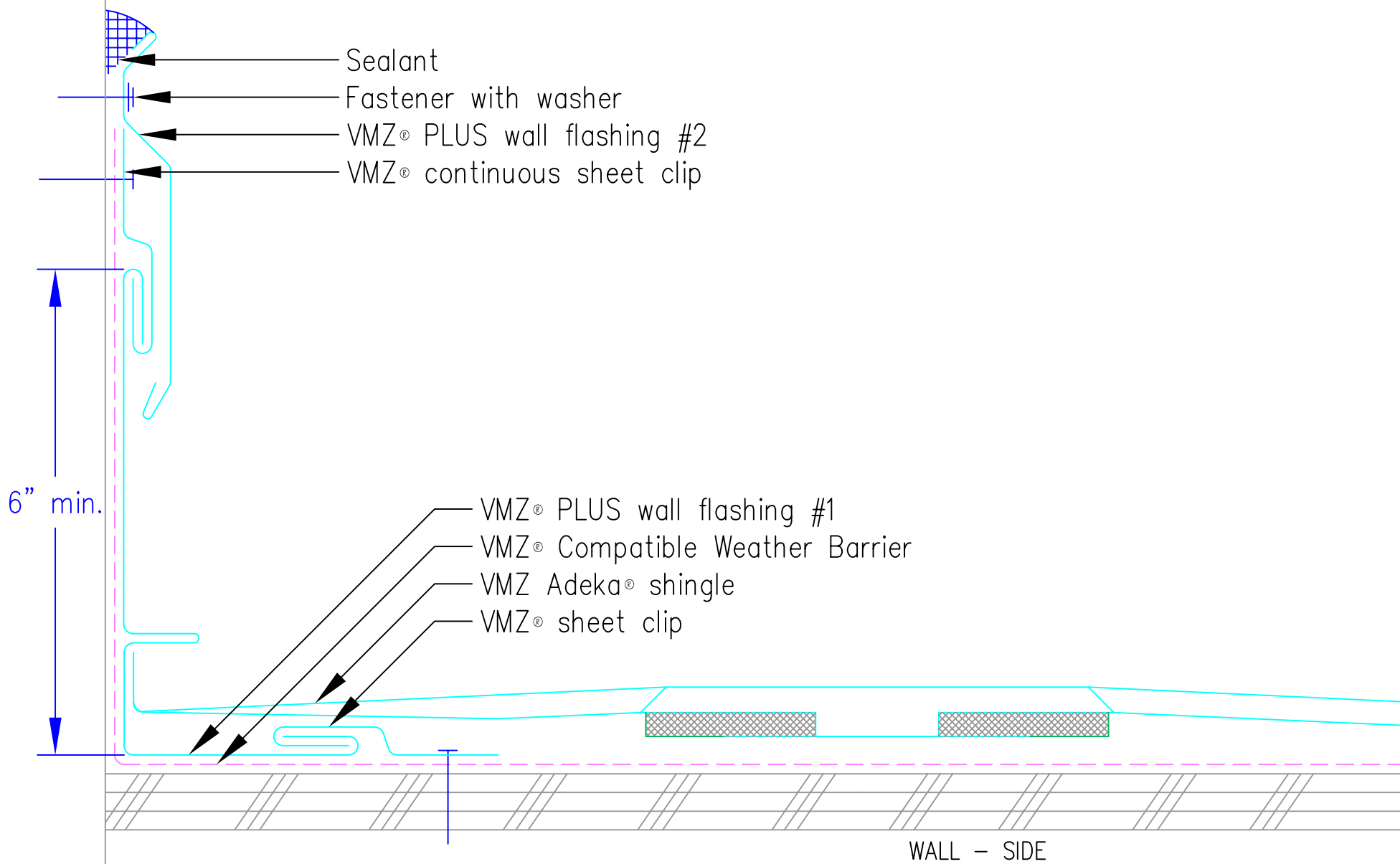
For general information e-mail:
info@vmzinc-us.com

SYSTEM:

Adeka-R

DRAWING:

1500



Umicore Building Products USA, Inc.
 3600 Glenwood Ave - Suite 250
 Raleigh, NC 27612
 (919) 874-7173 O.
 (919) 874-7140 F.

Scale:

NTS

Date:

04/30/2012

Drawn By:

LDL

For general information e-mail:
info@vmzinc-us.com

SYSTEM:

Adeka-R

DRAWING:

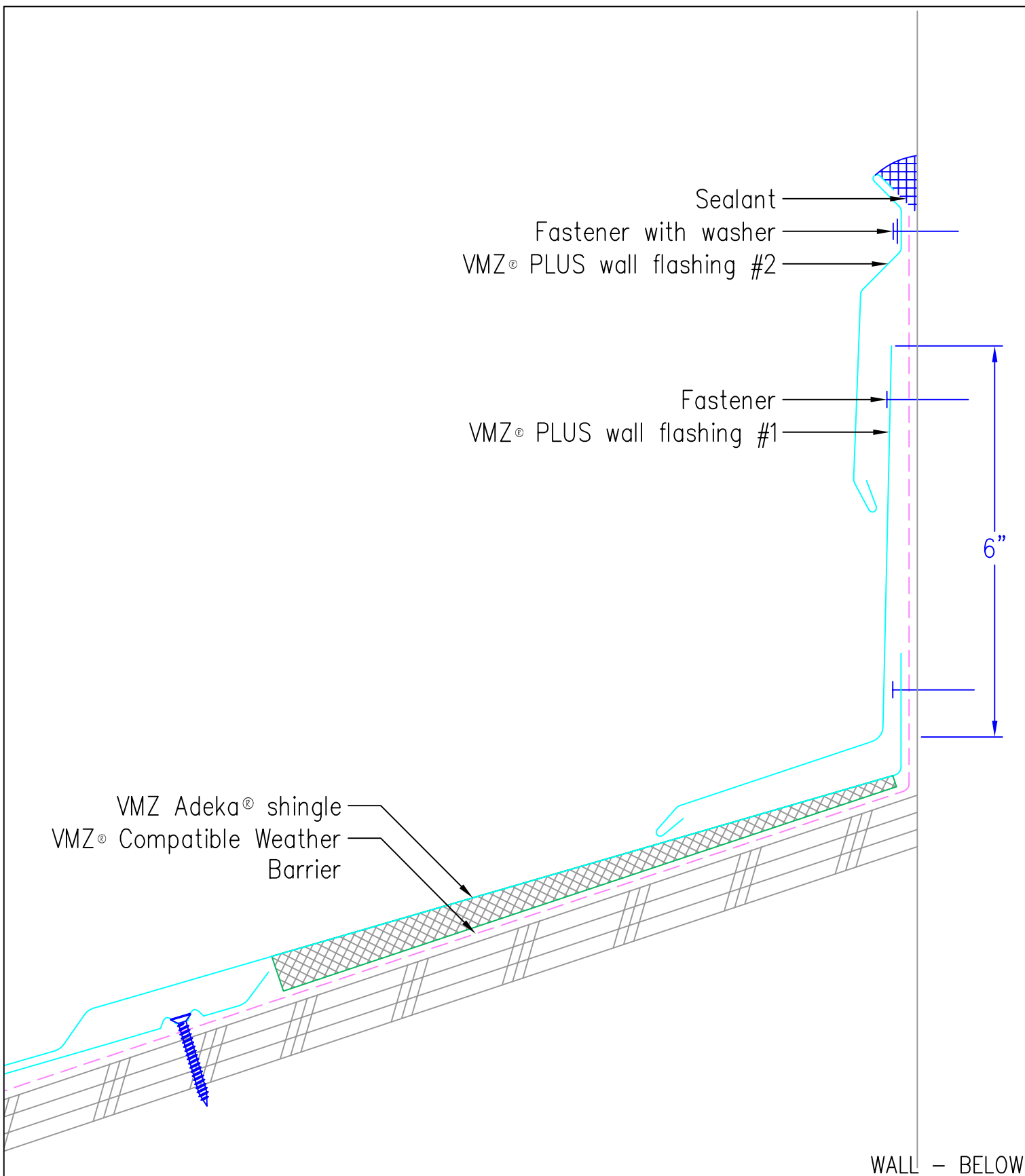
1510

www.vmzinc-us.com

NOT A SHOP DRAWING

FOR ILLUSTRATION ONLY

While all technical information and suggestions herein are believed to be reliable and accurate, nothing stated herein is to be taken as a warranty, expressed or implied. Responsibility for review remains solely with the design authority or other authority.



Umicore Building Products USA, Inc.
 3600 Glenwood Ave - Suite 250
 Raleigh, NC 27612
 (919) 874-7173 O.
 (919) 874-7140 F.

Scale:

6" = 1' - 0"

Date:

04/30/2012

Drawn By:

LDL

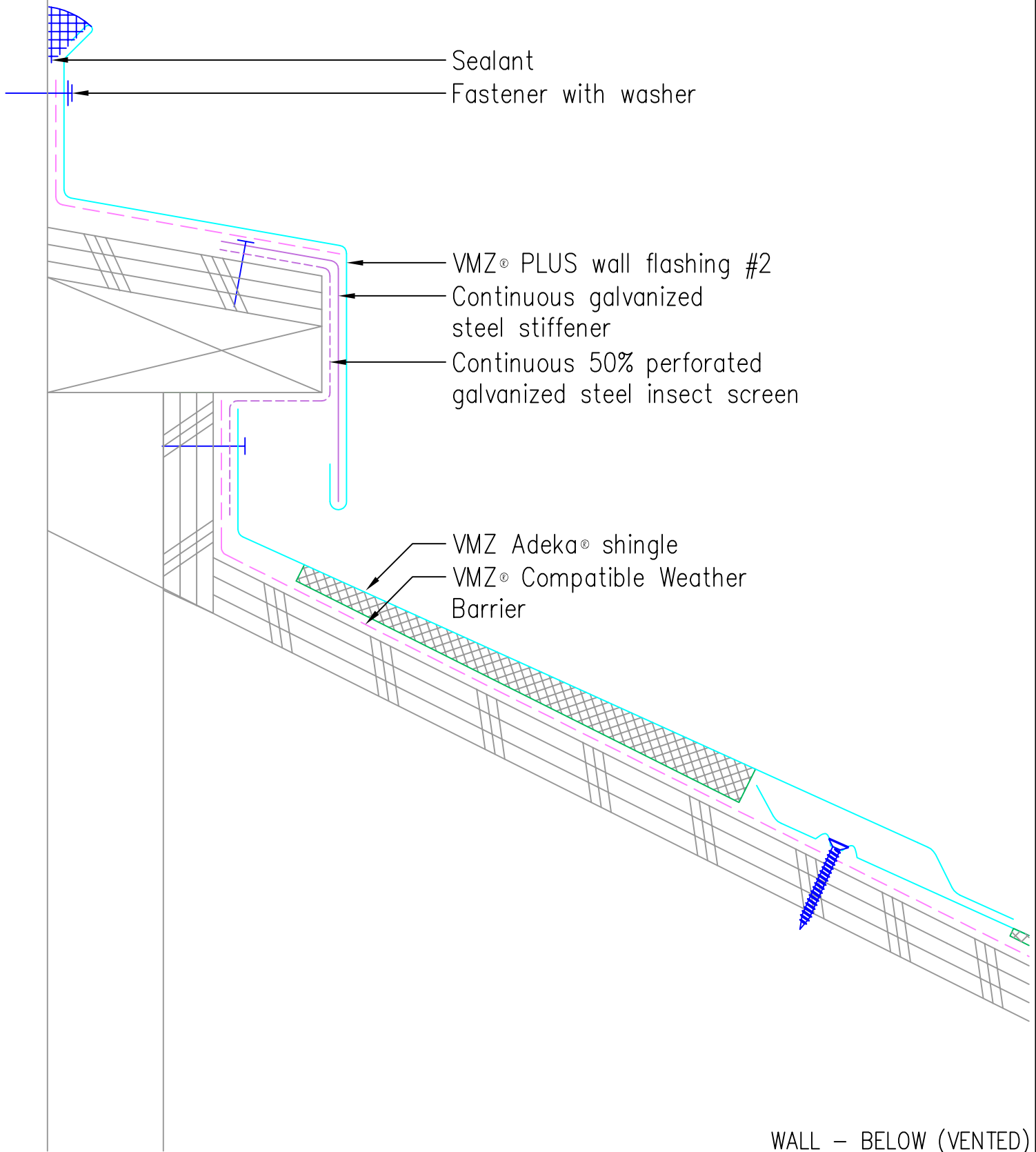
For general information e-mail:
info@vmzinc-us.com

SYSTEM:

Adeka-R

DRAWING:

1520



WALL - BELOW (VENTED)



Umicore Building Products USA, Inc.
3600 Glenwood Ave - Suite 250
Raleigh, NC 27612
(919) 874-7173 O.
(919) 874-7140 F.

Scale:

6" = 1' - 0"

Date:

04/30/2012

Drawn By:

LDL

For general information e-mail:
info@vmzinc-us.com

SYSTEM:

Adeka-R

DRAWING:

1521