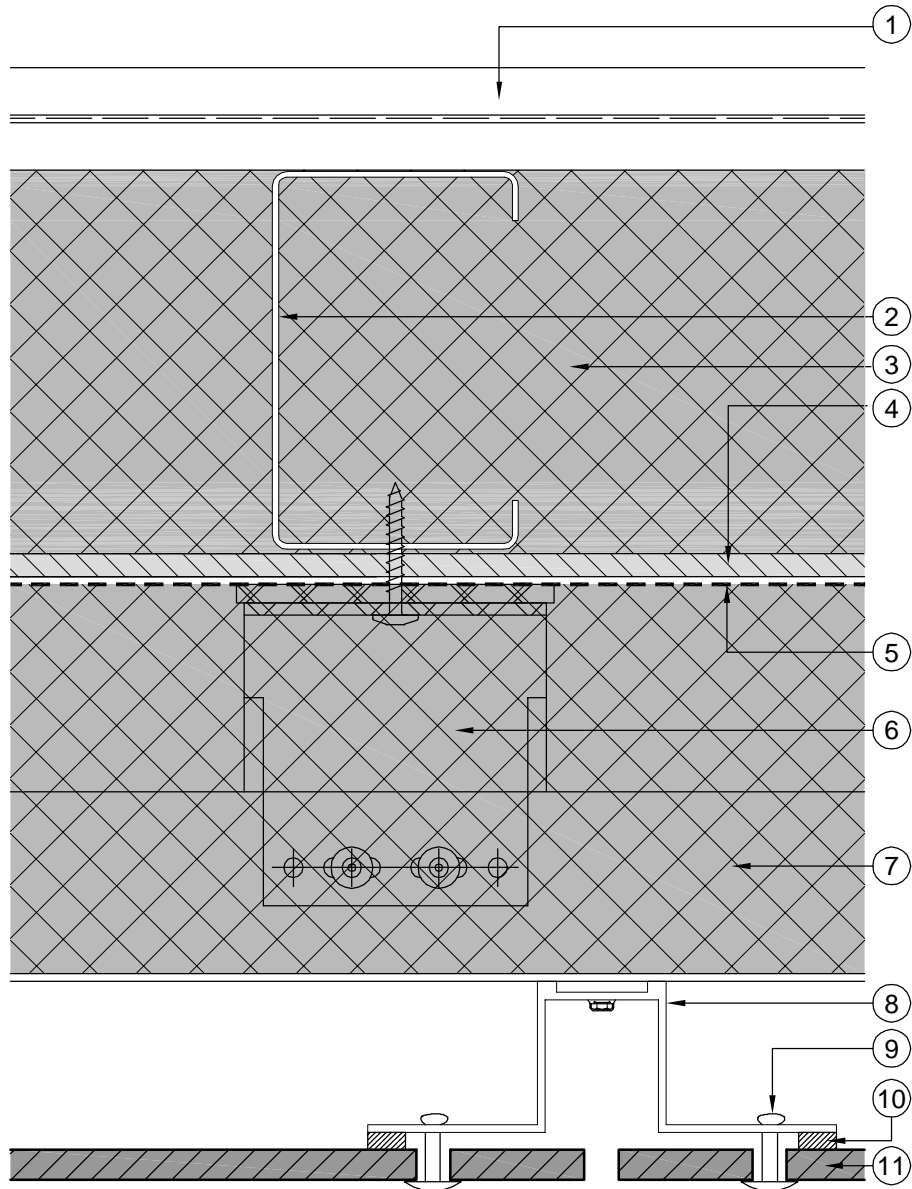


Legend

- | | |
|-------------------------------------------------------|-------------------------|
| 1 2 layers of 12.5mm plasterboard with vapour barrier | 10 Expandable foam tape |
| 2 Metal stud sections (by others) | 11 EQUITONE panel |
| 3 Insulation (by others) | |
| 4 Approved sheathing panel | |
| 5 Approved Building Wrap | |
| 6 Metal bracket and Thermostop | |
| 7 Horizontal Rail | |
| 8 Vertical profile - | |
| 9 EQUITONE rivet | |



EQUITONE DETAILS PANEL / LIGHTWEIGHT SUBFRAME _ USA

DRAWING TITLE VERTICAL JOINT DETAIL 1

REF	DATE 2013_01	SCALE 1:2
------------	---------------------	------------------

Copyright
This information is supplied in good faith but no liability can be accepted for any loss or damage resulting from use.

EQUITONE
Fibre cement facade materials